

CORNER RECORD

Agency Index 21-160

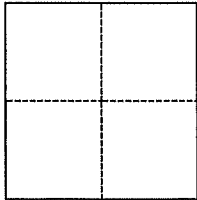
Document Number 030-044-16

City of Mill Valley County of Marin, California

Brief Legal Description MONUMENT ALONG E. BLITHEDALE AVE., AS SHOWN ON 15 PM 2

CORNER TYPE

COORDINATES (Optional)



- Government Corner
- Meander
- Rancho
- Control
- Property
- Other

N. _____ E. _____

Elevation _____

Units Metric U.S. Survey Foot

Horizontal Datum _____

Zone _____ Epoch Date _____

Vertical Datum _____

Complies with Public Resources Code §§8801-8819

Complies with Public Resources Code §§8890-8902

PLS Act Ref.: 8765(d) 8771 8773 Other:

Corner/Monument: Left as found Established Rebuilt Pre-Construction

Found and tagged Reestablished Referenced Post-Construction

Narrative of corner identified and monument as found, set, reset, replaced, or removed:

See sheet #2 for description(s):

SURVEYOR'S STATEMENT

This Corner Record was prepared by me or under my direction in conformance with

the Professional Land Surveyors' Act on October 8, 2021

Signed [Signature] P.L.S. or R.C.E. No. 8940



COUNTY SURVEYOR'S STATEMENT

This Corner Record was received 10-18-21

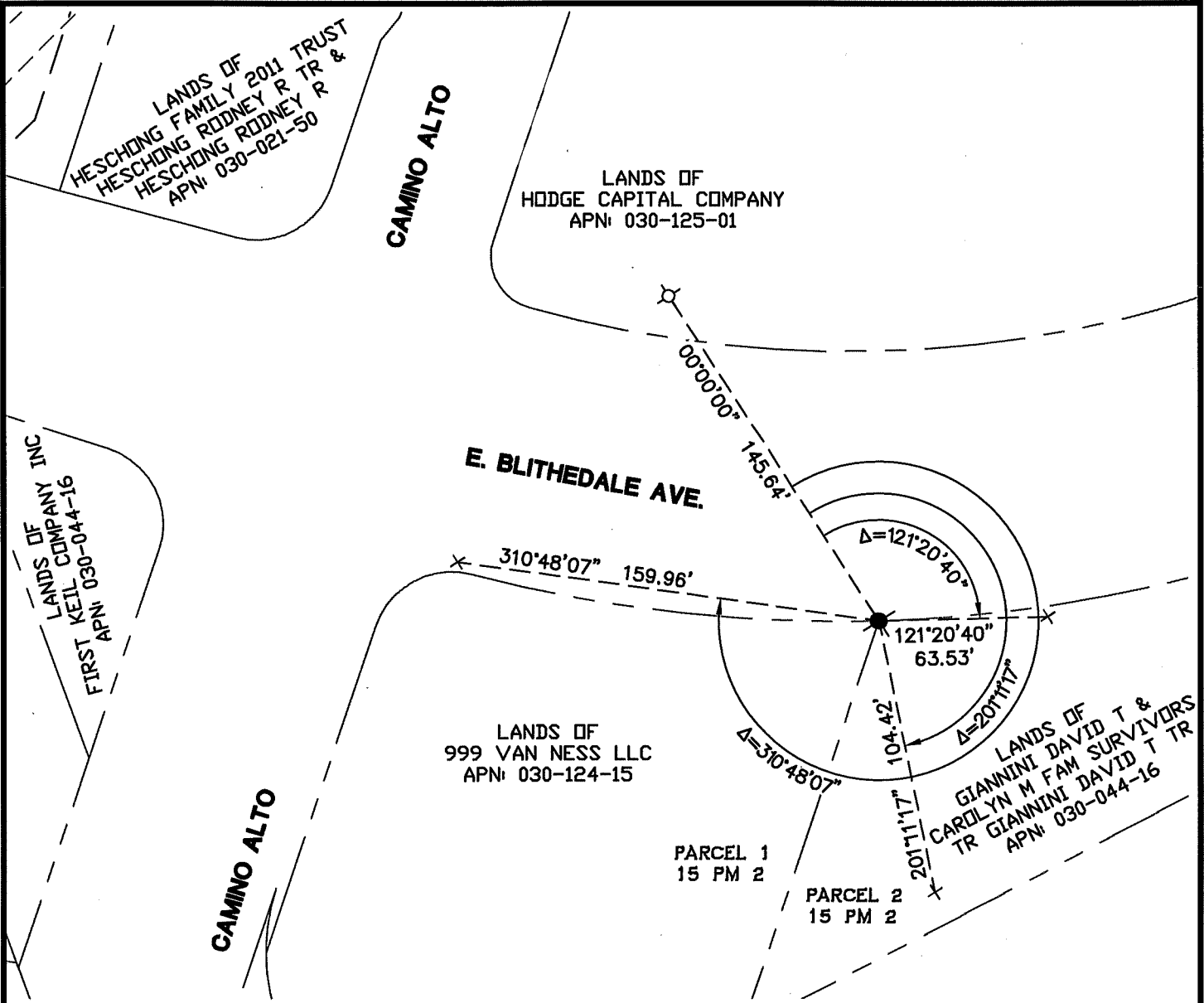
and examined and filed 1-31-22

Signed [Signature] P.L.S. or R.C.E. No. 9292

Title DEPUTY

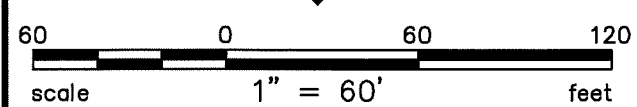
County Surveyor's Comment





LEGEND

	FOUND 1/2" IRON PIPE
	FOUND NAIL & TAG
	SET CUT CROSS REFERENCE MARK
	SET MAG & WASHER REFERENCE MARK
	TIE LINE



Plot Oct 08, 2021 at 4:48pm



200 4th STREET
SUITE 300
SANTA ROSA, CA 95401
(707) 583-8500
www.bkf.com

Jonathan P Shattuck
JONATHAN P SHATTUCK PLS 8940

