

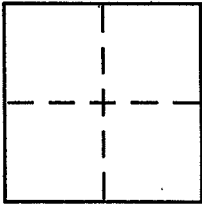
CORNER RECORD

Document Number APN: 030-037-17

City of Mill Valley

County of Marin, California

Brief Legal Description Lot 47 per 2006 RS 001



CORNER TYPE

Government Corner Control
Meander Property
Rancho Other
Date of Survey 12-17-12

COORDINATES (Optional)

N. _____
E. _____
Zone _____ NAD27 NAD83
NAD83 Epoch _____
Elev. _____
Vert. Datum: NGVD29 NAVD88
Meas. Units: Metric Imperial

Corner - Left as found Found and tagged Established Reestablished Rebuilt

Identification and type of corner found: Evidence used to identify or procedure used to establish or reestablish the corner:
See page 2 of 2.

A description of the physical condition of the monument as found and as set or reset: _____
See page 2 of 2.

SURVEYOR'S STATEMENT

This Corner Record was prepared by me or under my direction in conformance with the Land Surveyor's Act on 1/10/13

Signed [Signature] P.L.S or R.C.E. No. 6784

COUNTY SURVEYOR'S STATEMENT

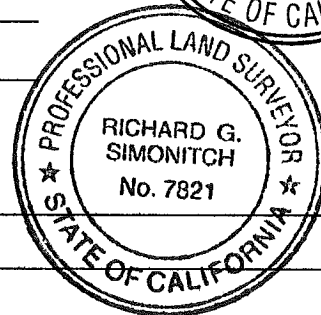
This Corner Record was received JANUARY 16, 2013

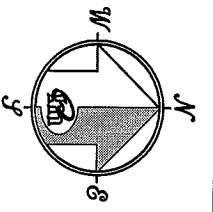
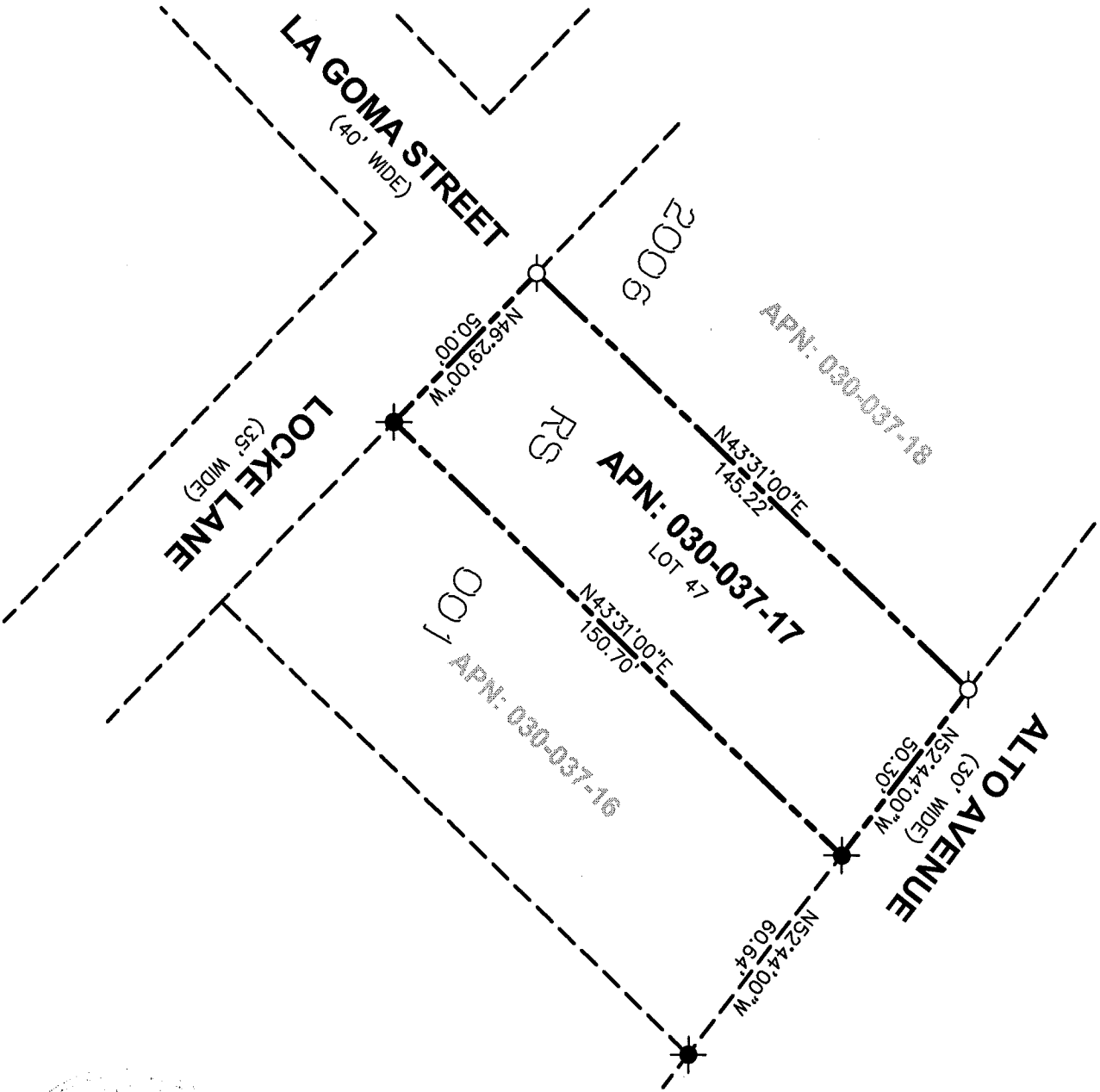
and examined and filed FEBRUARY 26, 2013

Signed [Signature] P.L.S or R.C.E. No. 7821

Title DEPUTY COUNTY SURVEYOR

County Surveyor's Comment _____





REFERENCE
 [A] "RECORD OF SURVEY" FILED FOR RECORD JANUARY 10, 2006 IN BOOK 2006 OF MAPS, AT PAGE 001, MARIN COUNTY RECORDS.

LEGEND

- FOUND 3/4" IRON PIPE WITH CAP, PLS 5814 PER [A]
- SET 5/8" REBAR WITH CAP, PLS 6784 PER [A]

NOTE
 RECORD = MEASURED

CORNER RECORD

MERIDIAN SURVEYING ENGINEERING, INC.
 2988 VAN NESS AVENUE
 SAN FRANCISCO, CA 94109
 (415) 440-4131
 info@meridiansurvey.com

12109
 777 GRAND AVENUE SUITE 202
 SAN RAFAEL, CA 94901
 (415) 456-5450