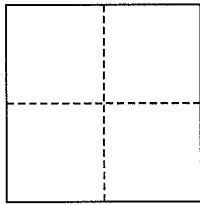


CORNER RECORD

City of Mill Valley

Document Number AP# 030-036-09
County of Marin, California

Brief Legal Description Portion of Lots 9 & 10, 5 RM 76



CORNER TYPE

Government Corner Control
Meander Property
Rancho Other
Date of Survey July 22, 2014

COORDINATES (Optional)

N. _____
E. _____
Zone _____ NAD27 NAD83
NAD83 Epoch _____
Elev. _____
Vert. Datum: NGVD29 NAVD88
Meas. Units: Metric Imperial

Corner- Left as found Found and tagged Established Reestablished Rebuilt

Identification and type of corner found: Evidence used to identify or procedure used to establish or reestablish the corner:
Found original Standard Street Mon Per 5 RM 76 & Found Open Iron Pipe per 31 RS 9

A description of the physical condition of the monument as found and as set or reset: Found Open Iron Pipe and found Iron Pipe & Cap (RCE 30465) being the NE Corner of Lands of Deitch-Messina as shown hereon. Set Iron Pipe & Cap (RCE 30465) on the Westerly line, extended Northerly 1.00' as shown hereon.

SURVEYOR'S STATEMENT

This corner Record was prepared by me or under my direction in conformance with the Land Surveyor's Act on July 22, 2014

Signed [Signature] P.L.S. or R.C.E. No. 30465

COUNTY SURVEYOR'S STATEMENT

This Corner Record was received July 24, 2014

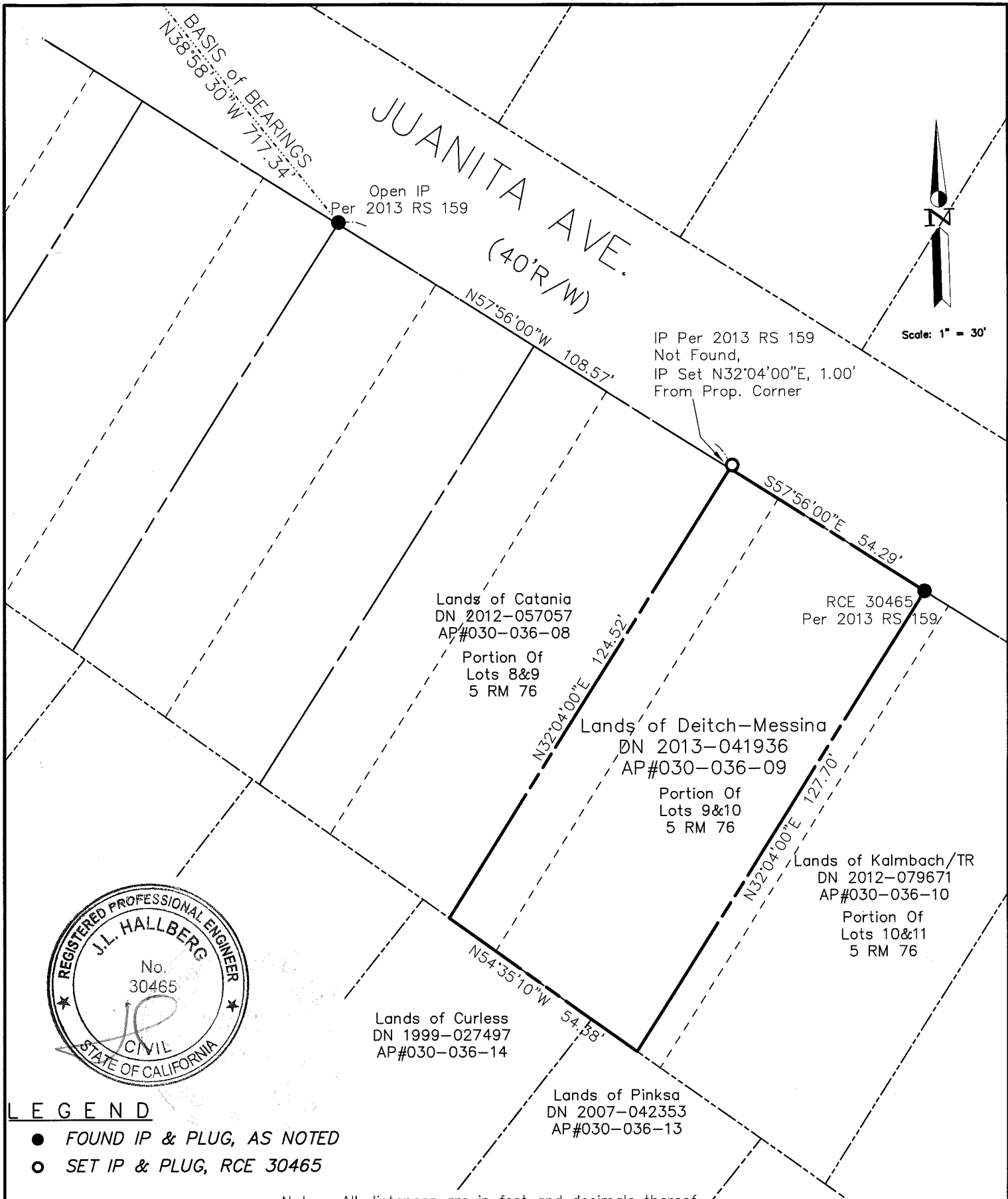
and examined and filed August 5, 2014

Signed [Signature] P.L.S. or R.C.E. No. 7821

Title DEPUTY



County Surveyor's Comment _____



LEGEND

- FOUND IP & PLUG, AS NOTED
- SET IP & PLUG, RCE 30465

Note: All distances are in feet and decimals thereof.

SHEET	1	OF	1
SCALE:	1" = 30'	DESIGN:	E.D.L.
DATE:	Jul 2014	DRAWN:	E.D.L.
FILE:	2013-062	CHECKED:	J.L.H

J.L. ENGINEERING
CIVIL ENGINEERS-LAND SURVEYORS
1539 4th ST., SAN RAFAEL, CA. 94901 (415) 457-6647

Corner Record
Lands of Deitch-Messina - 40 Juanita Ave.
APN 030-036-09, Mill Valley, Marin County, CA