

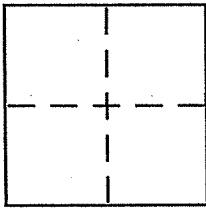
**CORNER RECORD**

Document Number 30-021-61

City of MILL VALLEY

County of MARIN, California

Brief Legal Description 24 PM 37; DEPICTED AS LANDS OF FLEMING



**CORNER TYPE**

Government Corner  Control   
Meander  Property   
Rancho  Other   
Date of Survey 6/15/2005

**COORDINATES (Optional)**

N. \_\_\_\_\_  
E. \_\_\_\_\_  
Zone \_\_\_\_\_ NAD27  NAD83   
NAD83 Epoch \_\_\_\_\_  
Elev. \_\_\_\_\_  
Vert. Datum: NGVD29  NAVD88   
Meas. Units: Metric  Imperial

Corner - Left as found  Found and tagged  Established  Reestablished  Rebuilt

Identification and type of corner found: Evidence used to identify or procedure used to establish or reestablish the corner:

Re-establish a portion of the most southerly line of 24 PM 37 from existing street monuments on Altamont Avenue as said monuments are depicted upon 24 PM 37. Refer to sketch on reverse side for details

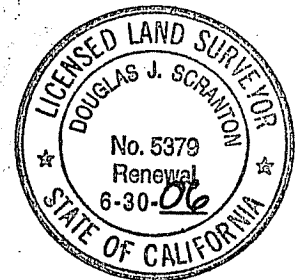
A description of the physical condition of the monument as found and as set or reset:

set 1/2" rebar with PLS CAP 5379 affixed to top & driven flush with surrounding grade.

**SURVEYOR'S STATEMENT**

This Corner Record was prepared by me or under my direction in conformance with the Land Surveyor's Act on July 12, 2005

Signed [Signature] P.L.S or R.C.E. No. PLS 5379



**COUNTY SURVEYOR'S STATEMENT**

This Corner Record was received JULY 14, 2005

and examined and filed AUGUST 12, 2005

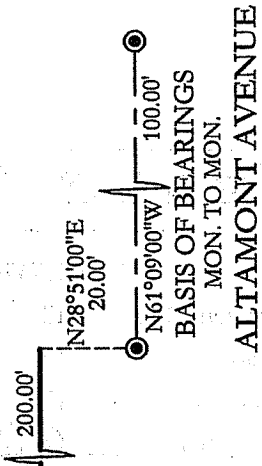
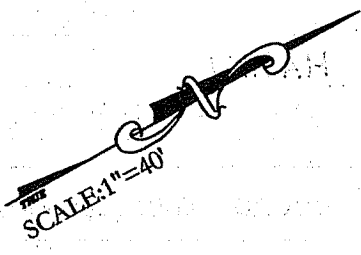
Signed [Signature] P.L.S or R.C.E. No. 7128

Title COUNTY SURVEYOR



County Surveyor's Comment \_\_\_\_\_

PREPARED BY  
DU SCRANTON SURVEYING  
NOVA TO, CA



**BASIS OF BEARINGS**

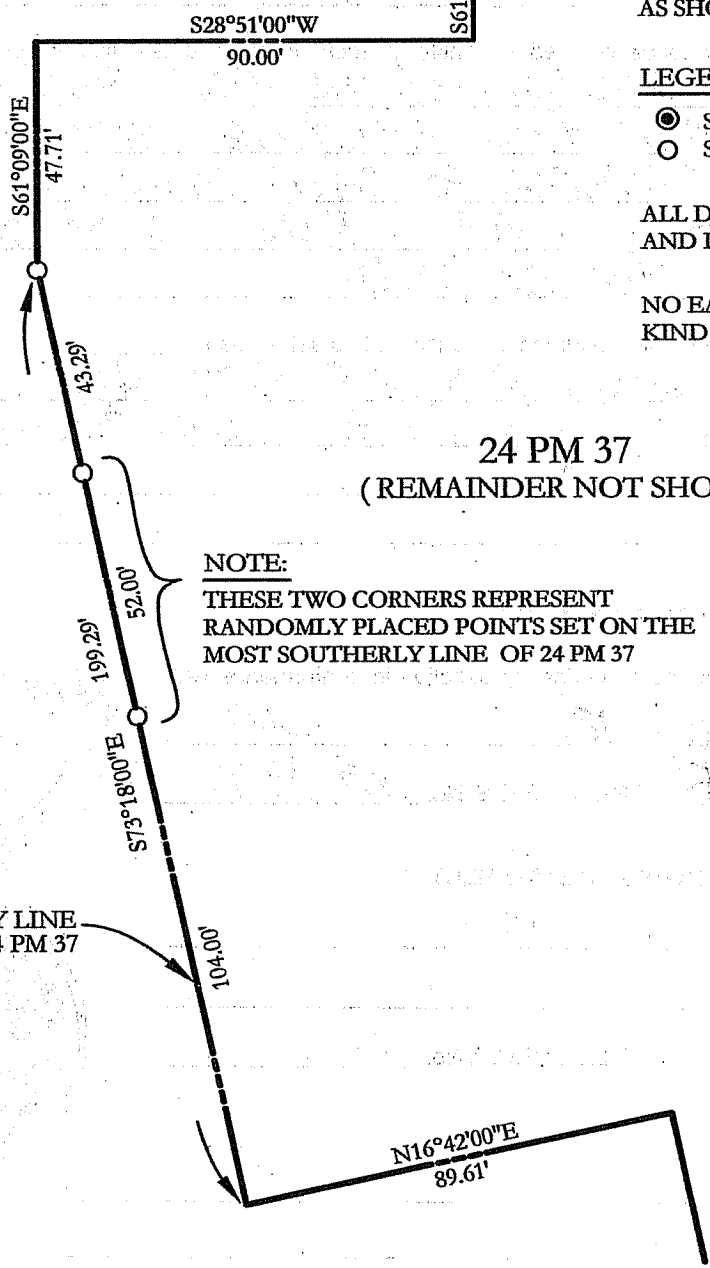
TAKEN AS N61°09'00"W BETWEEN MONUMENTS AS SHOWN AND AS DEPICTED UPON 24 PM 37

**LEGEND**

- STREET MONUMENT
- SET 1/2" REBAR/PLS CAP 5379

ALL DISTANCES GIVEN IN FEET AND DECIMALS THEREOF

NO EASEMENTS OF ANY KIND ARE SHOWN



**24 PM 37**  
(REMAINDER NOT SHOWN)

**NOTE:**

THESE TWO CORNERS REPRESENT RANDOMLY PLACED POINTS SET ON THE MOST SOUTHERLY LINE OF 24 PM 37

THE SOUTHERLY LINE SHOWN UPON 24 PM 37