

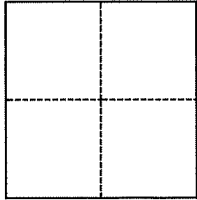
CORNER RECORD

Agency Index 21-159
Document Number 030-021-50

City of Mill Valley County of Marin, California
Brief Legal Description MONUMENT ALONG CAMINO ALTO, AS SHOWN ON 2019 MAPS 134

CORNER TYPE

COORDINATES (Optional)



- Government Corner
- Meander
- Rancho
- Control
- Property
- Other

Date of Survey August 17, 2021

N. _____ E. _____
 Elevation _____
 Units Metric U.S. Survey Foot
 Horizontal Datum _____
 Zone _____ Epoch Date _____
 Vertical Datum _____
 Complies with Public Resources Code §§8801-8819
 Complies with Public Resources Code §§8890-8902

- PLS Act Ref.: 8765(d) 8771 8773 Other:
- Corner/Monument: Left as found Established Rebuilt Pre-Construction
 Found and tagged Reestablished Referenced Post-Construction

Narrative of corner identified and monument as found, set, reset, replaced, or removed:
 See sheet #2 for description(s):

SURVEYOR'S STATEMENT

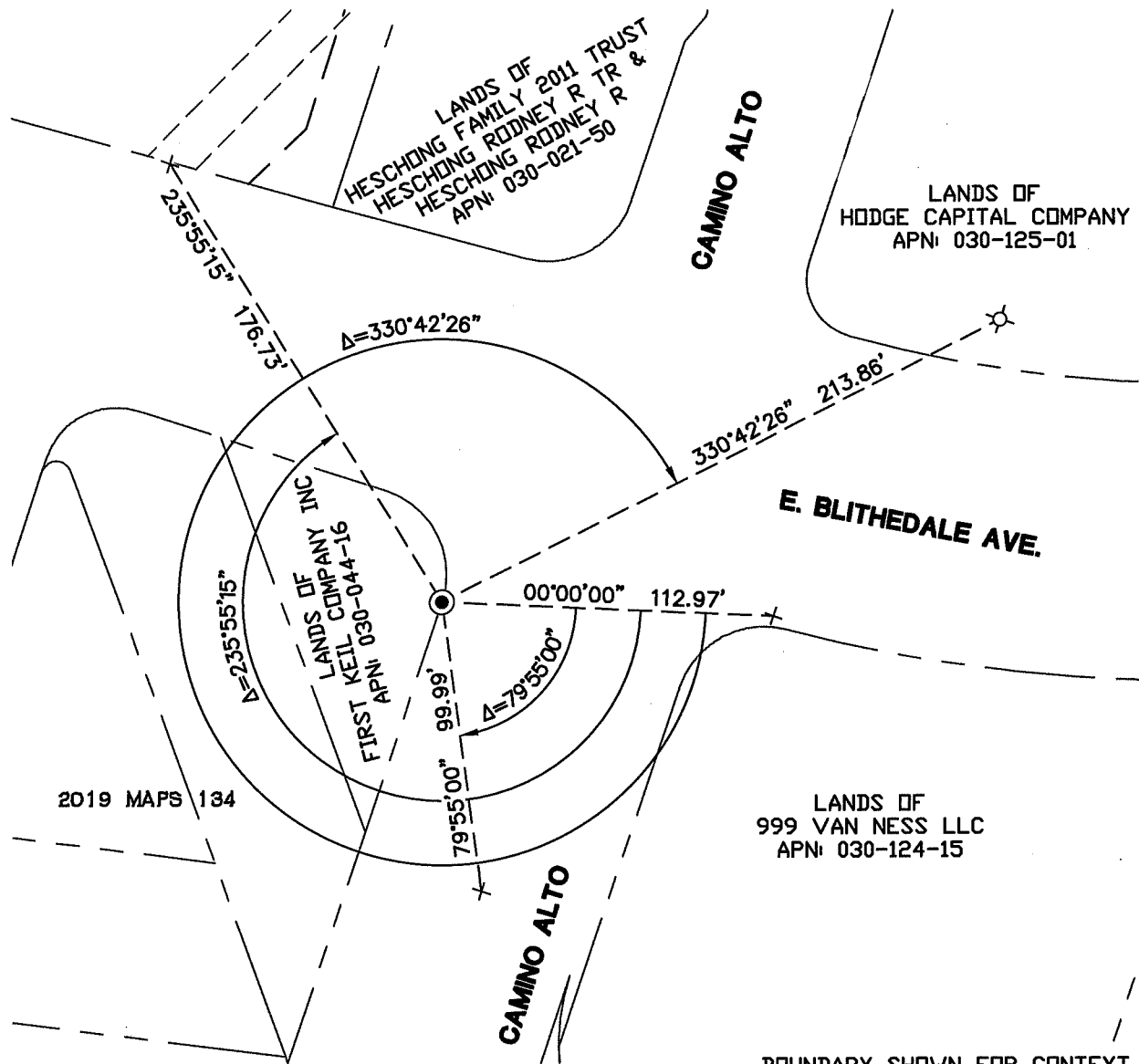
This Corner Record was prepared by me or under my direction in conformance with
 the Professional Land Surveyors' Act on October 8, 2021
 Signed [Signature] P.L.S. or R.C.E. No. 8940



COUNTY SURVEYOR'S STATEMENT

This Corner Record was received 10.18.21
 and examined and filed 1.31.22
 Signed [Signature] P.L.S. or R.C.E. No. 9292
 Title DEPUTY
 County Surveyor's Comment _____



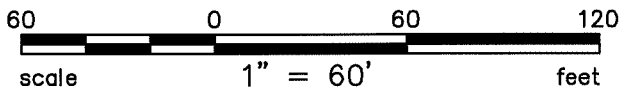


BOUNDARY SHOWN FOR CONTEXT ONLY



LEGEND

- ⊙ FOUND 1/2" IRON PIPE
- × SET CUT CROSS REFERENCE MARK
- ⊗ SET MAG & WASHER REFERENCE MARK
- TIE LINE



Plot Oct 08, 2021 at 4:36pm



200 4th STREET
 SUITE 300
 SANTA ROSA, CA 95401
 (707) 583-8500
 www.bkf.com

JONATHAN P SHATTUCK PLS 8940

COPYRIGHT © 2021 BKF ENGINEERS



211158_CR.dwg