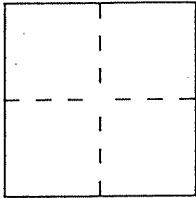


CORNER RECORD

Document Number _____

City of MILL VALLEY County of MARIN, California

Brief Legal Description PARCEL Z, PARCEL MAP (7 PM 140)



CORNER TYPE

Government Corner Control
 Meander Property
 Rancho Other
 Date of Survey _____

COORDINATES (Optional)

N. _____
 E. _____
 Zone _____ Datum _____
 Elev. _____

Corner — Left as found Found and tagged Established Reestablished Rebuilt

Identification and type of corner found: Evidence used to identify or procedure used to establish or reestablish the corner:

FOUND POINTS ALONG SOUTHEASTERLY PROPERTY LINE AS PER PARCEL MAP (7 PM 140)

A description of the physical condition of the monument as found and as set or reset: SET 1/2"
REPAIRS WITH CAPS, RCE 30465; SEE PAGE 2

SURVEYOR'S STATEMENT

This Corner Record was prepared by me or under my direction in conformance with the Land Surveyors' Act on 1-29 1998.

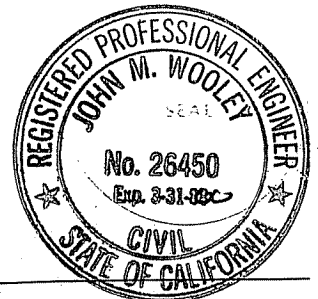
Signed Jay P. H. L.S. or R.C.E. Number RCE 30465



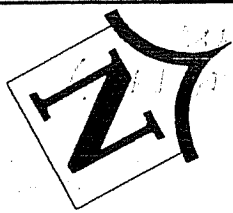
COUNTY SURVEYOR'S STATEMENT

This Corner Record was received JANUARY 29 1998 and examined and filed FEBRUARY 2 1998.

Signed John M. Woolley Title DEPUTY



County Surveyor's Comment _____

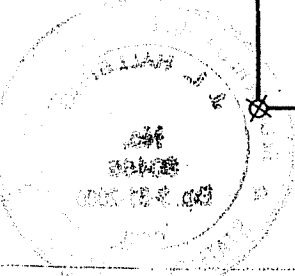
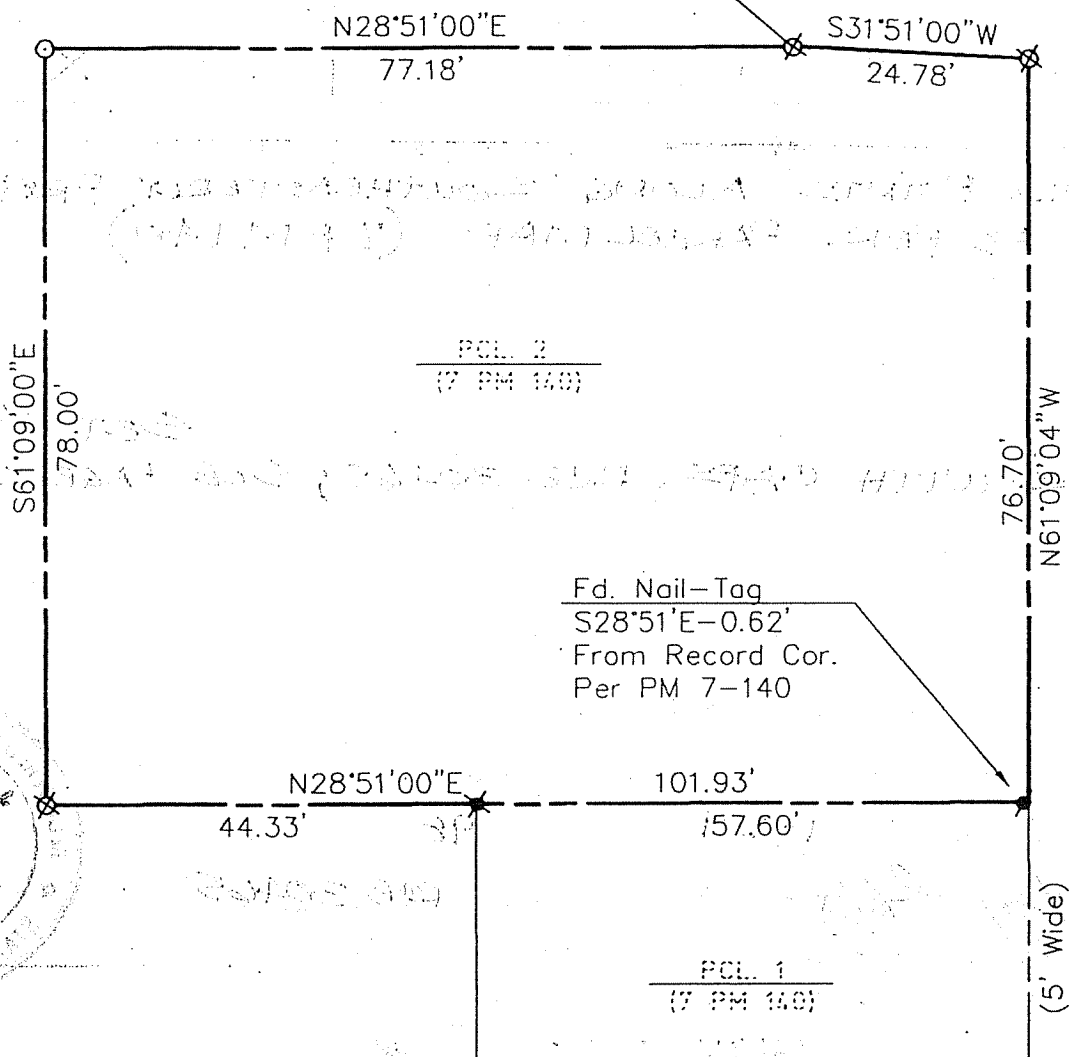


SCALE: 1" = 20'

ALTA

(40' R/W)

VISTA



LEGEND

- ✱ FOUND REBAR PER PM 7-140
- FOUND NAIL & TAG PER PM 7-140
- SET NAIL TAG, RCE 30465
- ⊗ SET 1/2" REBAR & CAP, RCE 30465