

CORNER RECORD

Agency Index

Document Number

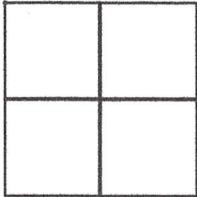
DPW # 20-005

029-350-02

City of Mill Valley

County of Marin, California

Brief Legal Description Lot 2 of "Map of Country Club Estates" filed in Book 2000 Maps Page 193

**CORNER TYPE**

Government Corner ☐ Control
Meander ☐ Property
Rancho ☐ Other

Date of Survey 07-16-19

COORDINATES (Optional)

N. E.

☐ Elevation☒ Units Metric ☐ U.S. Survey Foot ☒☐ Horizontal Datum

Zone Epoch Date

Vertical Datum

☐ Complies with Public Resources Code §§8801-8819☐ Complies with Public Resources Code §§8890-8902PLS Act Ref: ☒ 8765(d)☒ 8771☒ 8773☐ Other:Corner/Monument: ☐ Left as found☐ Established☐ Rebuilt☐ Pre-Construction☐ Found and tagged ☒ Reestablished☐ Referenced☐ Post-Construction

Narrative of corner identified and monument as found, set, reset, replaced, or removed:

☒ See sheet #2 for description (s):**SURVEYOR'S STATEMENT**

This Corner Record was prepared by me or under my direction in conformance with
the Professional Land Surveyors' Act on January 2nd 2020

Signed  P.L.S. or R.C.E. No. 6649**COUNTY SURVEYOR'S STATEMENT**

This Corner Record was received JANUARY 15, 2020

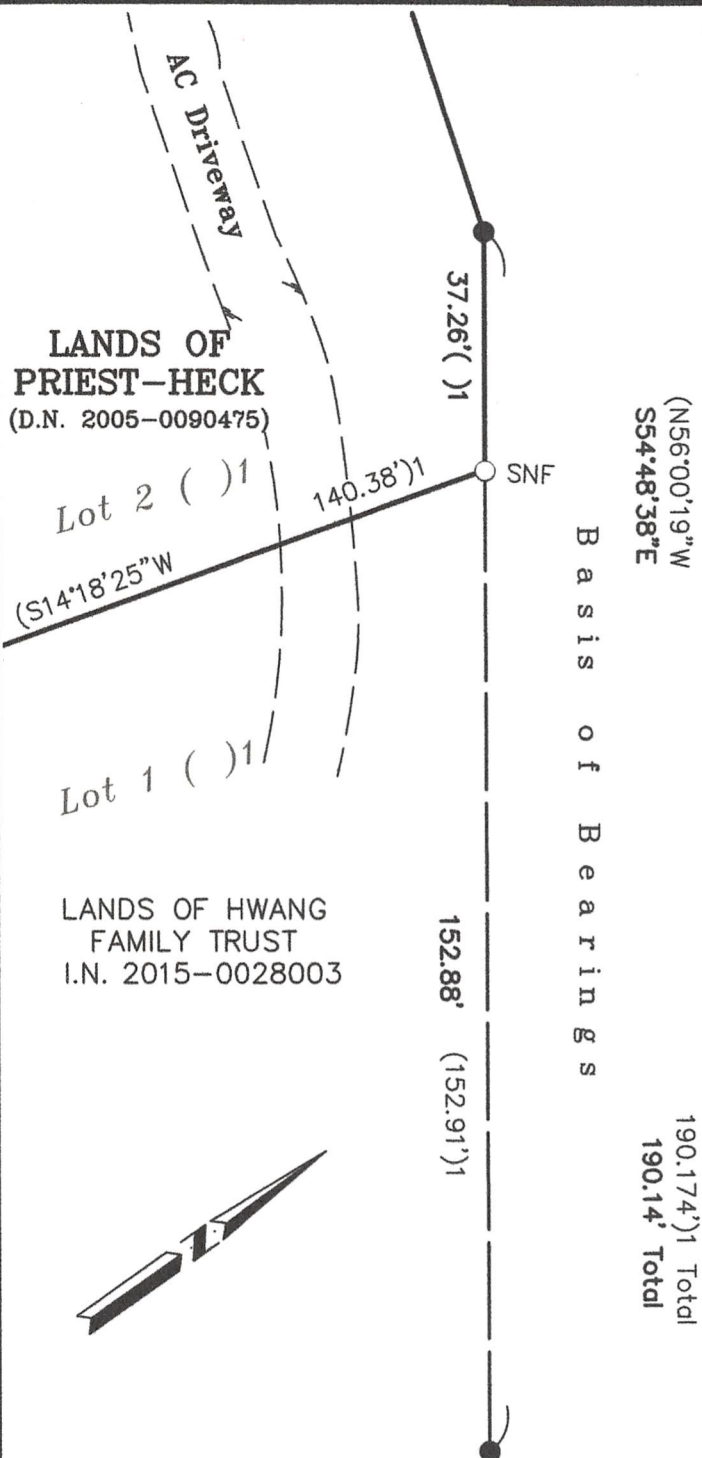
and examined and filed FEB. 26, 2020

Signed  P.L.S. or R.C.E. No. 9292

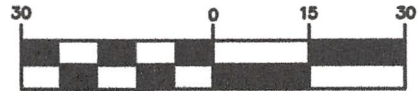
Title DEPUTY C.S.



County Surveyor's Comment



GRAPHIC SCALE



(IN FEET)

BASIS OF BEARINGS

The Basis of Bearings of this survey is S54°48'38"E between Found 3/4" Iron Pipes with Plastic Plugs "PLS 4953" as shown hereon. Rotated from the record bearing clockwise 1°11'41".

LEGEND

- Found 3/4" Iron Pipe & Plastic Plug "PLS 4953" ()1

- Set 5/8" Rebar with 1.5" Alum. Cap, Stamped "LA STEVENS LS 6649"



Edge of Pavement

SNF

Searched Nothing Found

REFERENCES

()1 2000 M 193, "Map of County Club Estates" by I.L. Schwartz Associates Inc. Filed November 6, 2000

Corner Record Lands of Priest-Heck

(Lot 2, 2000 map 193)

Mill Valley

Marin County

California

Scale: 1" = 30'

January 2020

L.A. Stevens & Associates, Inc.

Professional Land Surveyors * (415) 382-7713
7 Commercial Blvd., Suite 1 * Novato, CA 94949

Job # 191950

Page 2 Of 2



Lawrence A. Stevens, PLS 6649

Copyright © Lawrence A. Stevens 2019