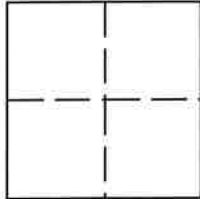


# CORNER RECORD

Agency Index DPW# 17-087Document Number APN: 029-341-06City of MILL VALLEY County of MARIN, CaliforniaBrief Legal Description LOT 29 PER 10 R.M. 15**CORNER TYPE****COORDINATES (Optional)**

- ☐ Government Corner ☐ Control  
☐ Meander ☒ Property  
☐ Rancho ☐ Other

Date of Survey \_\_\_\_\_

N. \_\_\_\_\_ E. \_\_\_\_\_

Elevation \_\_\_\_\_

Units ☐ Metric ☒ U.S. Survey Foot

Horizontal Datum \_\_\_\_\_

Zone \_\_\_\_\_ Epoch Date \_\_\_\_\_

Vertical Datum \_\_\_\_\_

☐ Complies with Public Resources Code §§8801-8819☐ Complies with Public Resources Code §§8890-8902PLS Act Ref.: ☐ 8765(d) ☐ 8771 ☐ 8773 ☐ Other: \_\_\_\_\_

Corner/  
Monument: ☐ Left as found ☒ Established ☐ Rebuilt ☐ Pre-Construction  
☐ Found and tagged ☐ Reestablished ☐ Referenced ☐ Post-Construction

Narrative of corner identified and monument as found, set, reset, replaced, or removed:

☒ See sheet #2 for description(s):

FOUND ORIGINAL CENTERLINE MONUMENTATION PER 10 R.M. 15 TO ESTABLISH THE  
BOUNDARY LOCATION AS STAKED PER SHEET 2.

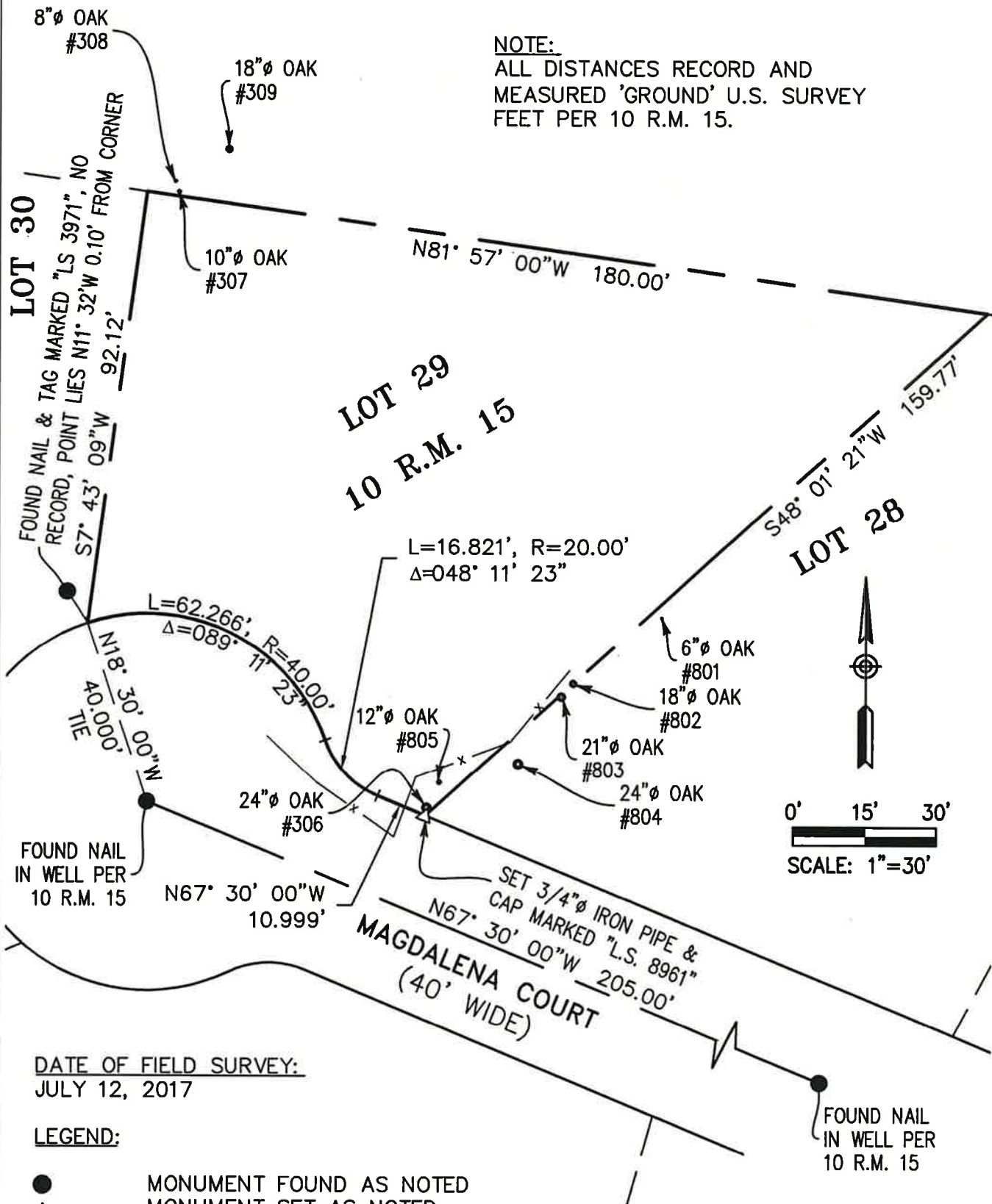
**SURVEYOR'S STATEMENT**

This Corner Record was prepared by me or under my direction in conformance with

the Professional Land Surveyors' Act on August 22, 2017Signed  P.L.S. or R.C.E. No. 8961**COUNTY SURVEYOR'S STATEMENT**This Corner Record was received SEPTEMBER 15, 2017and examined and filed NOV. 29, 2017Signed  P.L.S. or R.C.E. No. 9292Title DEPUTY C.S.

County Surveyor's Comment \_\_\_\_\_





DATE OF FIELD SURVEY:  
JULY 12, 2017

LEGEND:

- MONUMENT FOUND AS NOTED
- △ MONUMENT SET AS NOTED
- Ø DIAMETER
- #123 TREE TAG NUMBER

**OBERKAMPER & ASSOCIATES**  
**CIVIL ENGINEERS INC.**  
7200 REDWOOD BLVD SUITE 308 NOVATO, CA 94945  
PHONE (415) 897-2800