

CORNER RECORD

Document Number A.P.# 29-222-16

City of MILL VALLEY

County of MARIN, California

Brief Legal Description 26 O.S. 66

CORNER TYPE

COORDINATES (Optional)

Government Corner ☐

Control ☐Meander ☐Property ☒Rancho ☐Other ☐

Date of Survey 1/28/04

N. _____

E. _____

Zone _____ NAD27 ☐ NAD83 ☐

NAD83 Epoch _____

Elev.

Vert. Datum: NGVD29 ☐ NAVD88 ☐

Meas. Units: Metric ☐ Imperial ☐

Corner- Left as found ☐ Found and tagged ☐ Established ☐ Reestablished ☒ Rebuilt ☐

Identification and type of corner found: Evidence used to identify or procedure used to establish or reestablish the corner:

REESTABLISHED PROPERTY LINES FROM TWO POINTS FROM 26 O.S. 66 AND AS DELINEATED ON SHEET 2.

A description of the physical condition of the monument as found and as set or reset: SEE SHEET 2.

SURVEYOR'S STATEMENT

This Corner Record was prepared by me or under my direction in conformance with

the Land Surveyor's Act on JANUARY 28 2004

Signed Lawrence P. Doyle P.L.S. or R.C.E. No. P.L.S. 4694



COUNTY SURVEYOR'S STATEMENT

This Corner Record was received FEBRUARY 4, 2004

and examined and filed FEBRUARY 10, 2004

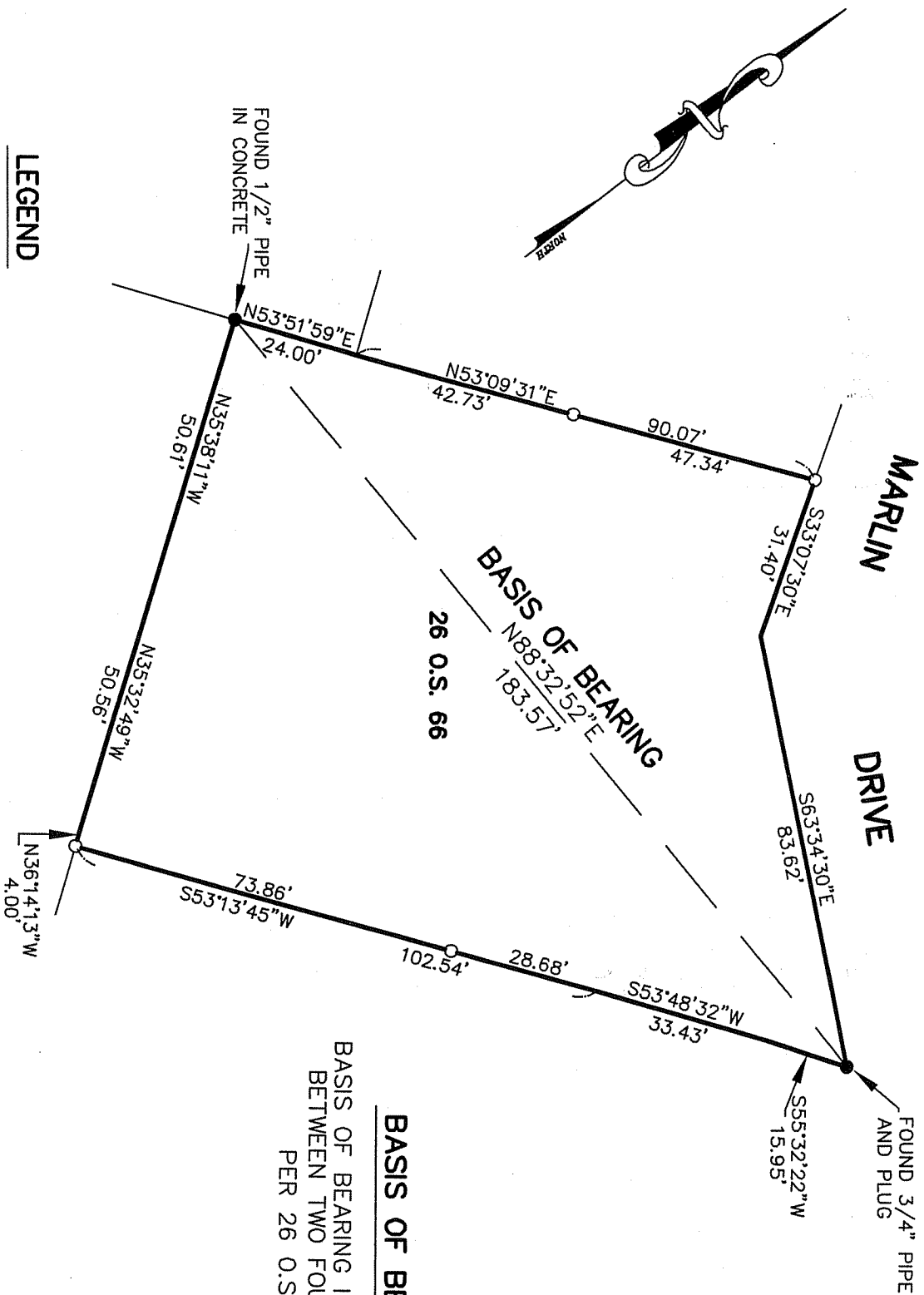
Signed _____ P.L.S. or R.C.E. No. 7128

Title COUNTY SURVEYOR

County Surveyor's Comment



- LEGEND**
- FOUND POINT AS NOTED
 - SET 3/4" PIPE AND PLUG



MILL VALLEY

MARIN COUNTY

CALIFORNIA

CORNER RECORD

26 O.S. 66

SCALE: 1" = 30'

DATE: 1/28/04

DRAWN BY: SHEET 1 OF 1

LAWRENCE P. DOYLE
 LAND SURVEYOR/CIVIL ENGINEER
 P.O. BOX 1609 MILL VALLEY CA 94942 (415-388-9585)

DRAWING NO. 1238-04