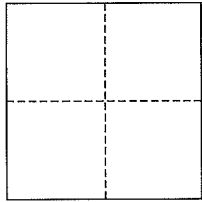


# CORNER RECORD

City of Mill Valley

Document Number AP# 029-213-12  
County of Marin, California

Brief Legal Description Lands of Mraz as identified on 26 RS 40



## CORNER TYPE

Government Corner ☐ Control ☐  
Meander ☐ Property ☐  
Rancho ☐ Other ☐  
Date of Survey \_\_\_\_\_

## COORDINATES (Optional)

N. \_\_\_\_\_  
E. \_\_\_\_\_  
Zone \_\_\_\_\_ NAD27 ☐ NAD83 ☐  
NAD83 Epoch \_\_\_\_\_  
Elev. \_\_\_\_\_  
Vert. Datum: NGVD29 ☐ NAVD88 ☐  
Meas. Units: Metric ☐ Imperial ☐

**Corner-** Left as found ☐ Found and tagged ☐ Established ☒ Reestablished ☐ Rebuilt ☐

Identification and type of corner found: Evidence used to identify or procedure used to establish or reestablish the corner:  
Found Steel Hex Bolt & found Iron Pipe & Cap (LS 2897) as shown hereon, per 26 RS 40

A description of the physical condition of the monument as found and as set or reset: All Property Corners and  
Property Line points were set as shown hereon, per 26 RS 40.

## SURVEYOR'S STATEMENT

This corner Record was prepared by me or under my direction in conformance with  
the Land Surveyor's Act on August 6, 2013

Signed [Signature] P.L.S. or R.C.E. No. 30465

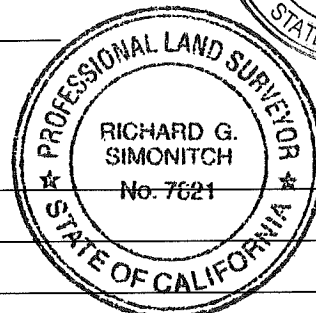
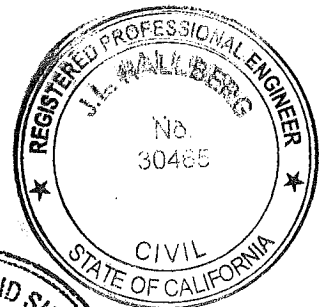
## COUNTY SURVEYOR'S STATEMENT

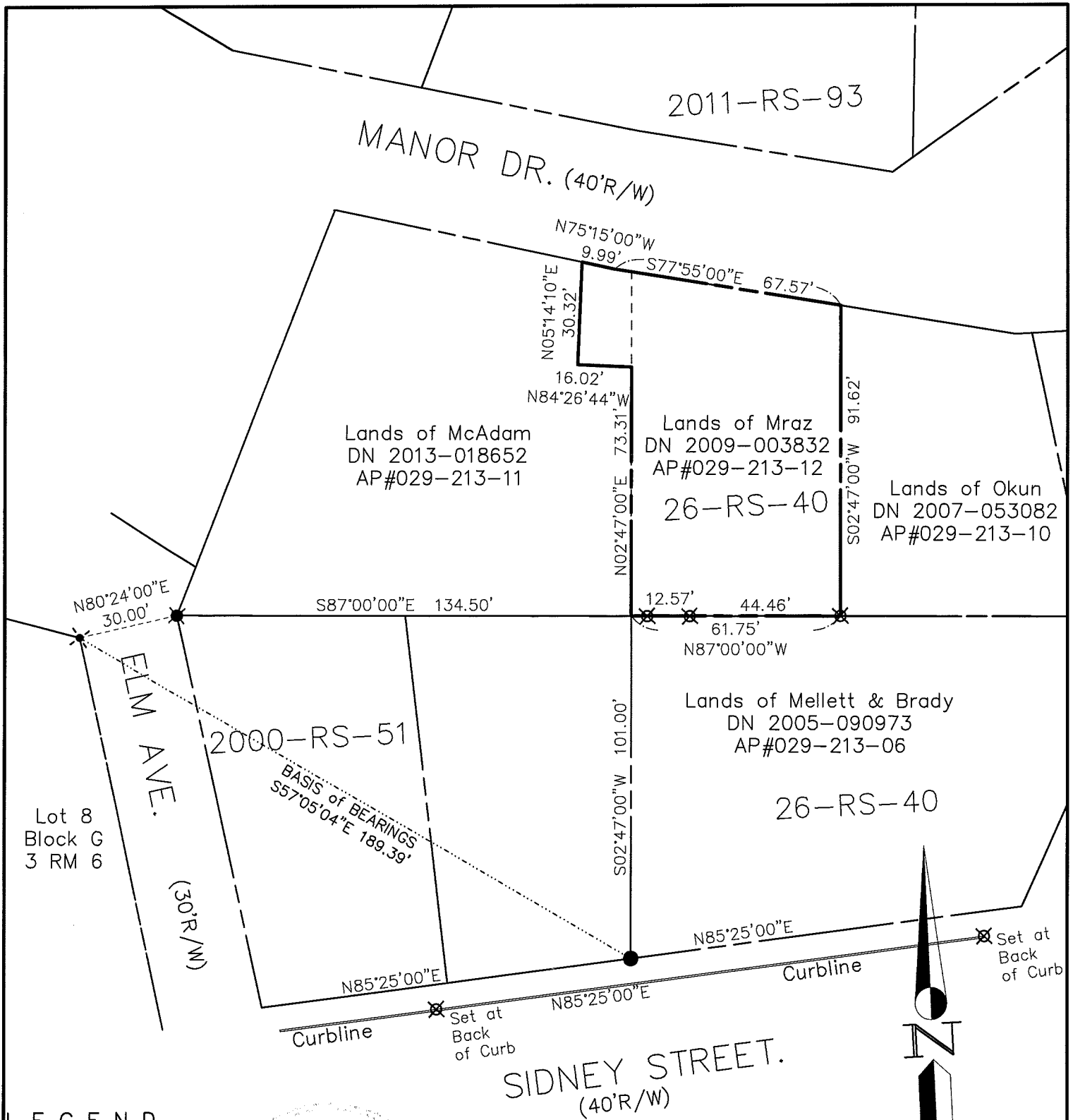
This Corner Record was received AUGUST 13, 2013  
and examined and filed OCTOBER 1, 2013

Signed [Signature] P.L.S. or R.C.E. No. 7821

Title DEPUTY CO. SURVEYOR

County Surveyor's Comment \_\_\_\_\_





# LEGEND

- FOUND IP & PLUG, PER 26 RS 40
- ✱ FOUND REBAR & CAP, PER 2000 RS 51
- ✱ FOUND STEEL BOLT, PER 26 RS 40
- ✱ SET REBAR & CAP, RCE 30465

Note: All distances are in feet and decimals thereof.

SHEET	1	OF	1
SCALE:	1" = 40'	DESIGN:	E.D.L.
DATE:	Aug 2013	DRAWN:	E.D.L.
FILE:	2013-068	CHECKED:	J.L.H.
2013-068\DWG\13-068-BASE,COR-REC			

J.L. ENGINEERING  
CIVIL ENGINEERS-LAND SURVEYORS  
1539 4th ST., SAN RAFAEL, CA. 94901 (415) 457-6647

## Corner Record

Lands of Mraz - 155 Manor Dr.  
APN 029-213-12, Mill Valley, Marin County, CA