

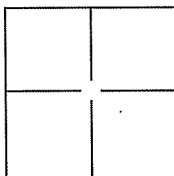
CORNER RECORD

Document Number A.P.N. 029-193-13

City of Mill Valley

County of Marin, California

Brief Legal Description Lot 6, 25 Euterpe Street, 2001 OS 171.



CORNER TYPE

Government Corner ☐ Control ☐
Meander ☐ Property ☒
Rancho ☐ Other ☐

Date of Survey 30 August 2010

COORDINATES(Optional)

N. _____
E. _____
Zone _____ NAD27 ☐ NAD83 ☐
NAD83 Epoch _____
Elev. _____
Vert. Datum: NGVD29 ☐ NADV88 ☐
Meas. Units: Metric ☐ Imperial ☐

Corner - Left as found ☐ Found and tagged ☐ Established ☒ Reestablished ☒ Rebuilt ☐

Identification and type of corner found: Evidence used to identify or procedure used to establish or reestablish the corner:

Found 1-1/4" Iron Pipe No Tag per 2001 OS 171, Found Rebar and Yellow Cap L.S. 4811 per
2001 OS 171 and Found Rebar and Yellow Cap L.S. 7744.

A description of the physical condition of the monument as found and as set or reset:

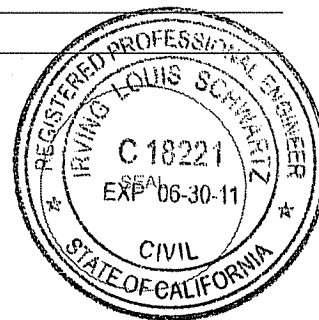
Set SW corner on Lot 6, 2001 OS 171 and three Ginney Points along the westerly line,
See Exhibit "A".

SURVEYOR'S STATEMENT

This Corner Record was prepared by me or under my direction in conformance with
the Land Surveyor's Act on OCTOBER 11, 2010

Signed _____

P.L.S. or R.C.E. No.: 18221



COUNTY SURVEYOR'S STATEMENT

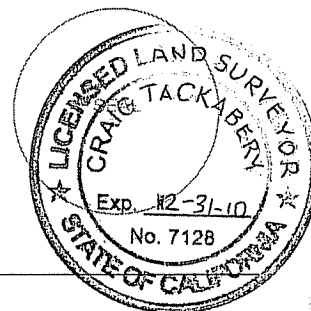
This Corner Record was received OCTOBER 13, 2010 and examined
and filed OCTOBER 21, 2010

Signed _____

P.L.S. or R.C.E. No.: 7128

Title COUNTY SURVEYOR

County Surveyor's Comment _____





ILS ASSOCIATES, INC.®
Civil Engineering & Land Surveying
79 Galli Drive, Suite A
Novato, Ca 94949-5717
(415)883-9200 FAX (415)883-2763

DRAWN:

SJM

JOB NO:

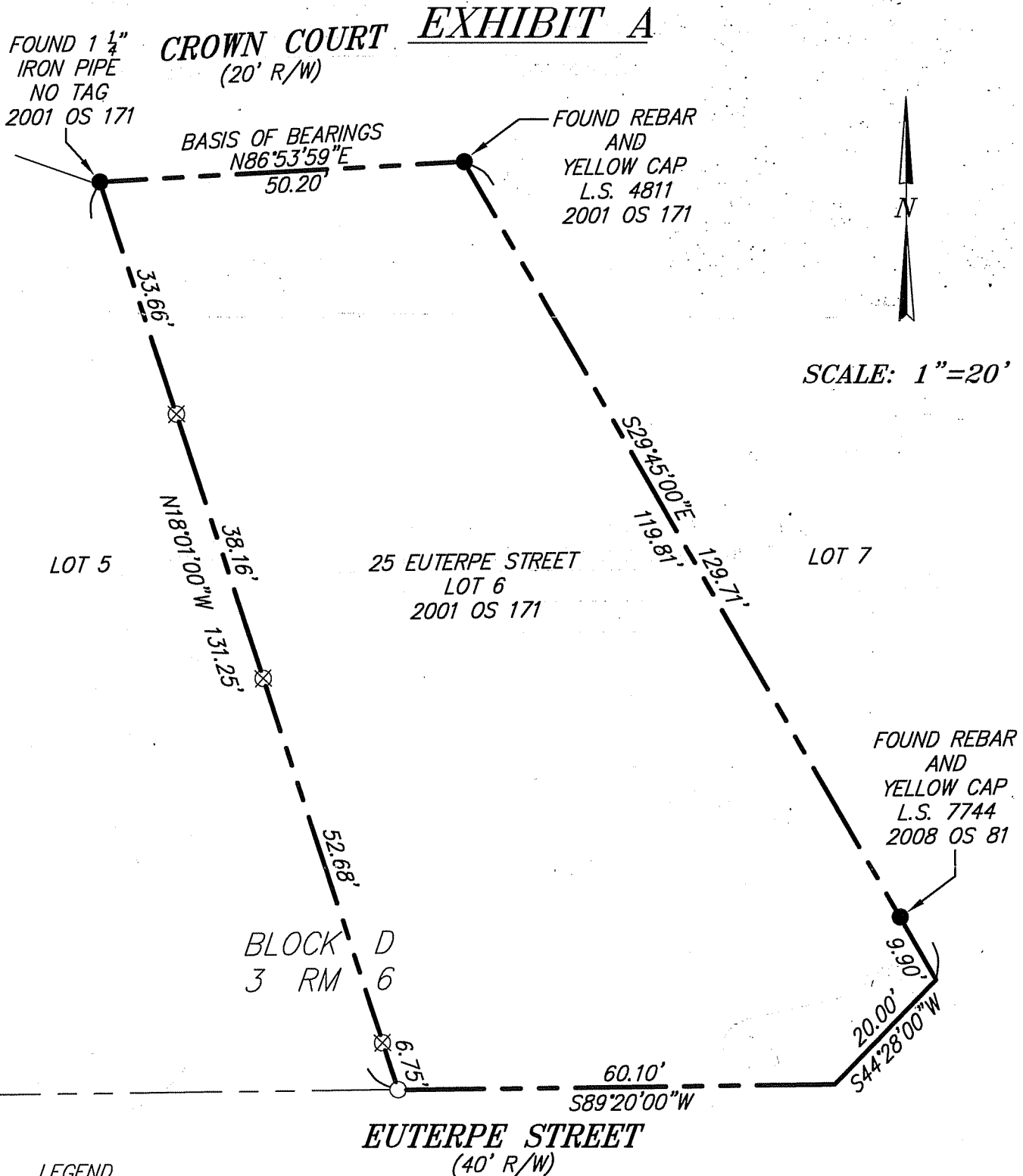
8499

DATE:

9/13/10

SHEET NO.

2 OF 2



LEGEND

- SET 3/4" IRON PIPE & YELLOW CAP "R.C.E. 18221"
- ⊗ SET GINNEY - POINT ON PROPERTY LINE
- FOUND AS NOTED

NOTE:

ALL DIMENSIONS AND BEARINGS SHOWN HEREON ARE PER 2001 OS 171.