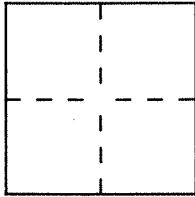


CORNER RECORD

Document Number 29-146-05 & 29-142-02

City of MILL VALLEY County of MARIN, California

Brief Legal Description lots 8 & 26 7 R.M. 63 APN 29-146-05, 29-142-02



CORNER TYPE

Government Corner ☐ Control ☐
 Meander ☐ Property ☒
 Rancho ☐ Other ☐
 Date of Survey _____

COORDINATES (Optional)

N. _____
 E. _____
 Zone _____ Datum _____
 Elev. _____

Corner — Left as found ☐ Found and tagged ☐ Established ☐ Reestablished ☐ Rebuilt ☐

Identification and type of corner found: Evidence used to identify or procedure used to establish or reestablish the corner:

See Sketch

APN 29-146-05 = lot 8

APN 29-142-02 = lot 26

A description of the physical condition of the monument as found and as set or reset:

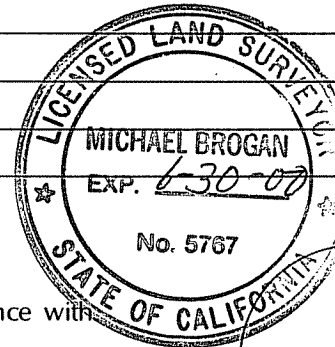
See Sketch

SURVEYOR'S STATEMENT

This Corner Record was prepared by me or under my direction in conformance with

the Land Surveyors' Act on Feb 16 1999.

Signed Michael A. Brogan L.S. or R.C.E. Number 5767



SEAL

COUNTY SURVEYOR'S STATEMENT

This Corner Record was received February 23 1999 and examined

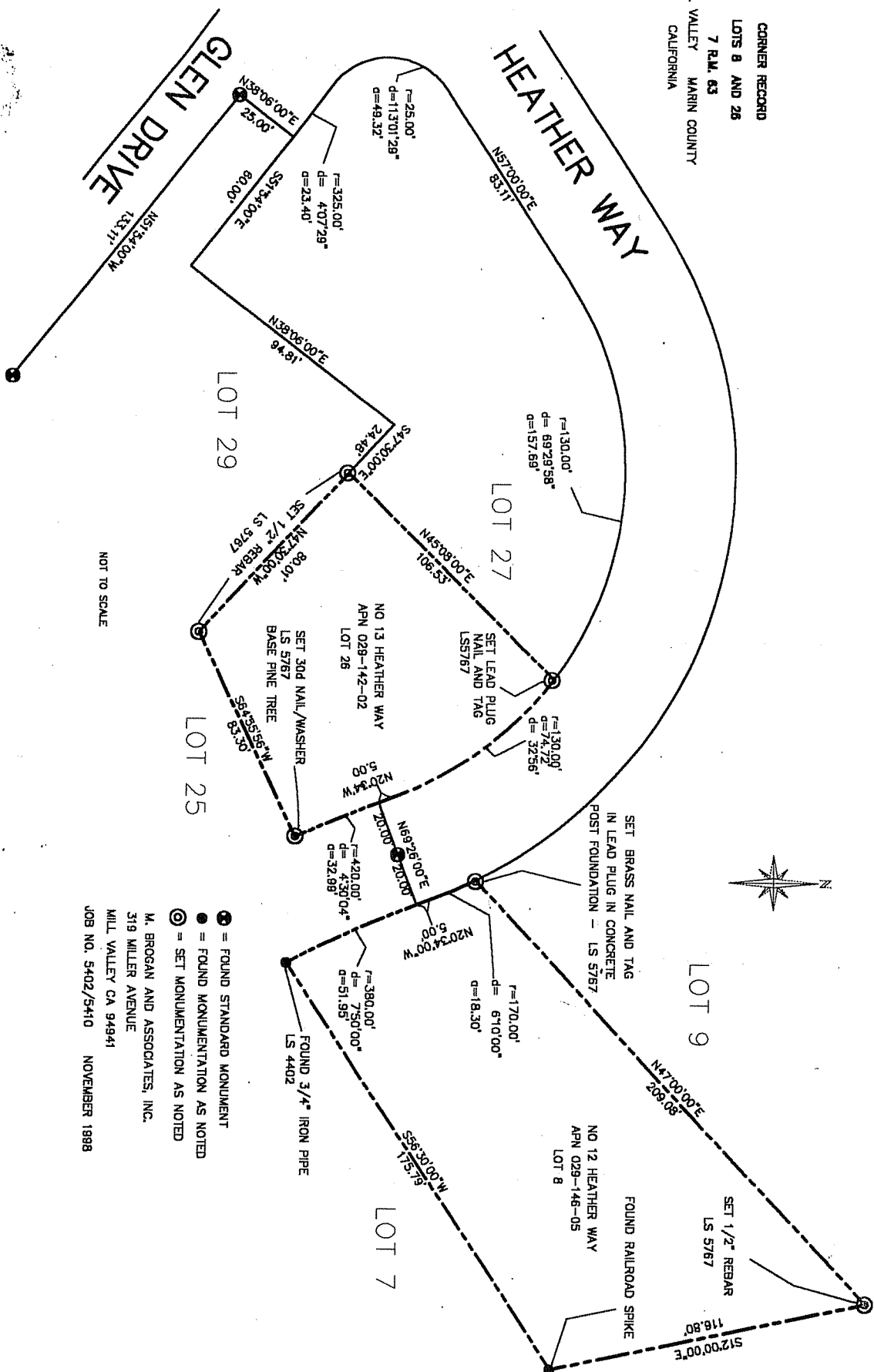
and filed February 24 1999.

Signed John M. Woolley Title Deputy



County Surveyor's Comment _____

CORNER RECORD
 LOTS 8 AND 26
 7 R.M. 63
 MILL VALLEY MARIN COUNTY
 CALIFORNIA



NOT TO SCALE

- = FOUND STANDARD MONUMENT
 - = FOUND MONUMENTATION AS NOTED
 - ⊙ = SET MONUMENTATION AS NOTED
- M. BROGAN AND ASSOCIATES, INC.
 319 MILLER AVENUE
 MILL VALLEY CA 94541
 JOB NO. 5402/5410 NOVEMBER 1998