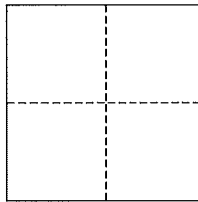


CORNER RECORD

City of Mill Valley

Document Number AP# 029-146-03
County of Marin, California

Brief Legal Description Lot 10, 7 RM 63



CORNER TYPE

Government Corner ☐ Control ☐
Meander ☐ Property ☒
Rancho ☐ Other ☐
Date of Survey _____

COORDINATES (Optional)

N. _____
E. _____
Zone _____ NAD27 ☐ NAD83 ☐
NAD83 Epoch _____
Elev. _____
Vert. Datum: NGVD29 ☐ NAVD88 ☐
Meas. Units: Metric ☐ Imperial ☐

Corner- Left as found ☐ Found and tagged ☐ Established ☒ Reestablished ☐ Rebuilt ☐

Identification and type of corner found: Evidence used to identify or procedure used to establish or reestablish the corner:
Found original Standard Street Mons, per 7 RM 63, 2001 RS 205 & CR #029-146-05&029-142-02

A description of the physical condition of the monument as found and as set or reset: All Property Corners and
Property Line points were set as shown hereon, per 7 RM 63.

SURVEYOR'S STATEMENT

This corner Record was prepared by me or under my direction in conformance with
the Land Surveyor's Act on October 9, 2013

Signed Jay [Signature] P.L.S. or R.C.E. No. 30465

COUNTY SURVEYOR'S STATEMENT

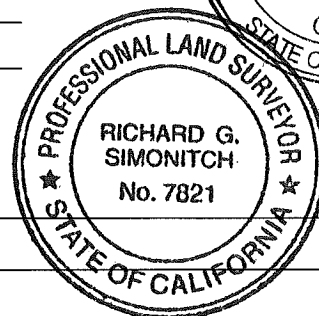
This Corner Record was received OCTOBER 10, 2013

and examined and filed OCTOBER 14, 2013

Signed [Signature] P.L.S. or R.C.E. No. 7821

Title DEPUTY CO. SURVEYOR

County Surveyor's Comment _____



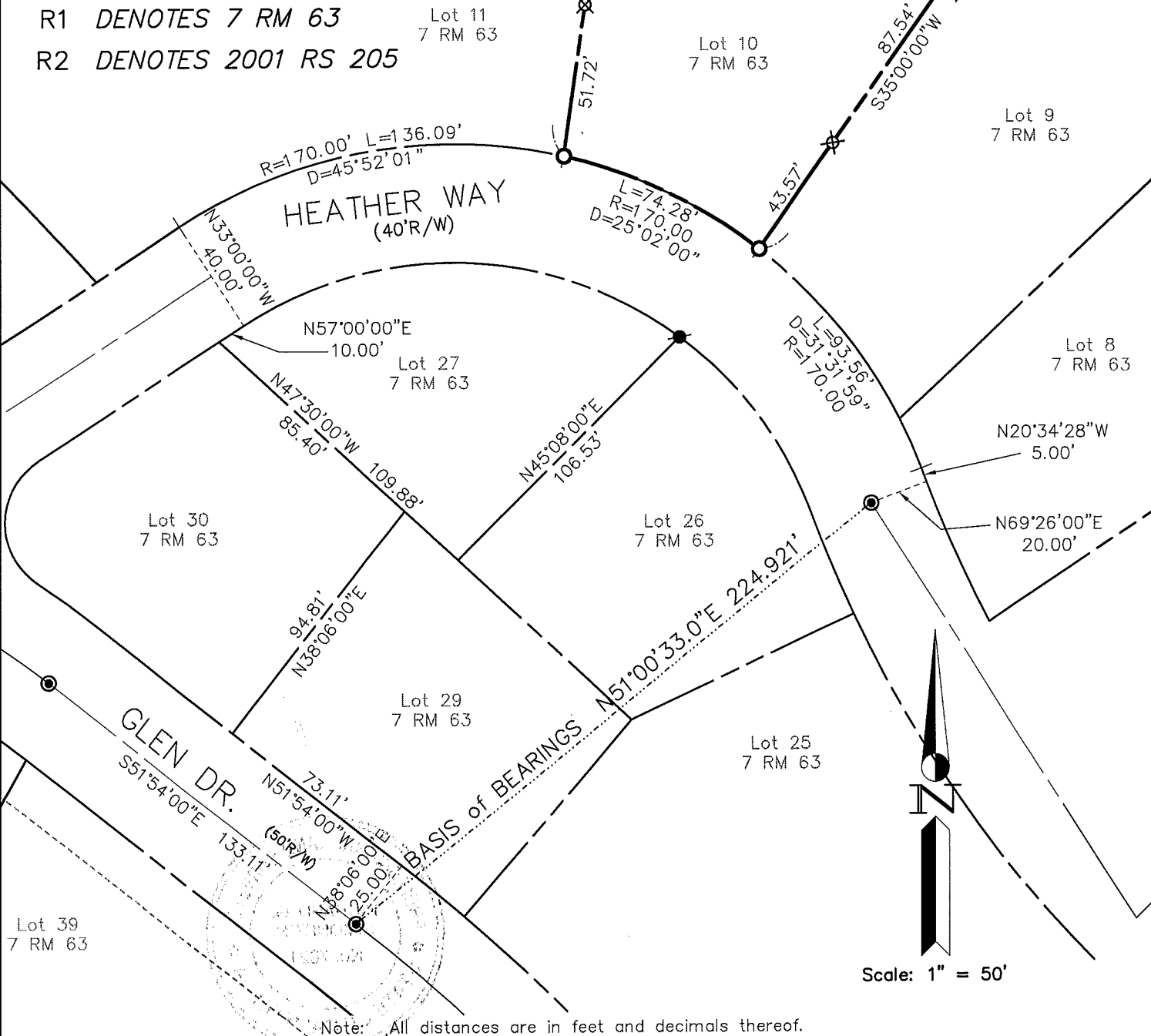
LEGEND

- FOUND STRT MONUMENT, PER R1
- FOUND NAIL & TAG, PER R2
- SET IP & PLUG, RCE 30465
- ⊗ SET REBAR & CAP, RCE 30465
- SET 2x2 HUB & TACK

REFERENCES

R1 DENOTES 7 RM 63

R2 DENOTES 2001 RS 205



Note: All distances are in feet and decimals thereof.

SHEET	1	OF	1
SCALE:	1" = 50'	DESIGN:	PR
DATE:	Jul 2013	DRAWN:	PR
FILE:	2013-063	CHECKED:	J.L.H
2013-063\DWG\13-063-BASE,COR-REC			

J.L. ENGINEERING
CIVIL ENGINEERS-LAND SURVEYORS
1539 4th ST., SAN RAFAEL, CA. 94901 (415) 457-6647

Corner Record

Lands of Young - 16 Heather Way
APN 029-146-03, Mill Valley, Marin County, CA