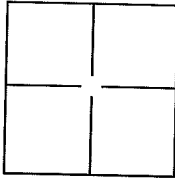


# CORNER RECORD

City of MILL VALLEY  
Brief Legal Description \_\_\_\_\_

Document Number AP 029-115-03  
County of MARIN, California



## CORNER TYPE

Government Corner ☐ Control ☐  
Meander ☐ Property ☐  
Rancho ☐ Other ☐

Date of Survey MAY 2013

## COORDINATES(Optional)

N. \_\_\_\_\_  
E. \_\_\_\_\_  
Zone \_\_\_\_\_ NAD27 ☐ NAD83 ☐  
NAD83 Epoch \_\_\_\_\_  
Elev. \_\_\_\_\_  
Vert. Datum: NGVD29 ☐ NADV88 ☐  
Meas. Units: Metric ☐ Imperial ☐

Corner - Left as found ☐ Found and tagged ☐ Established ☒ Reestablished ☐ Rebuilt ☐

Identification and type of corner found: Evidence used to identify or procedure used to establish or reestablish the corner:

RETRACEMENT OF 3 RM 51

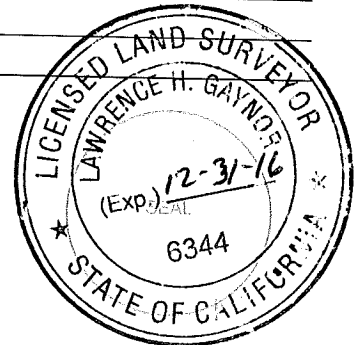
A description of the physical condition of the monument as found and as set or reset:

Set 1/2" DIA REBAR 2 CAP PLS 6344

## SURVEYOR'S STATEMENT

This Corner Record was prepared by me or under my direction in conformance with the Land Surveyor's Act on APRIL, 2013.

Signed [Signature] P.L.S. or R.C.E. No.: 6344



## COUNTY SURVEYOR'S STATEMENT

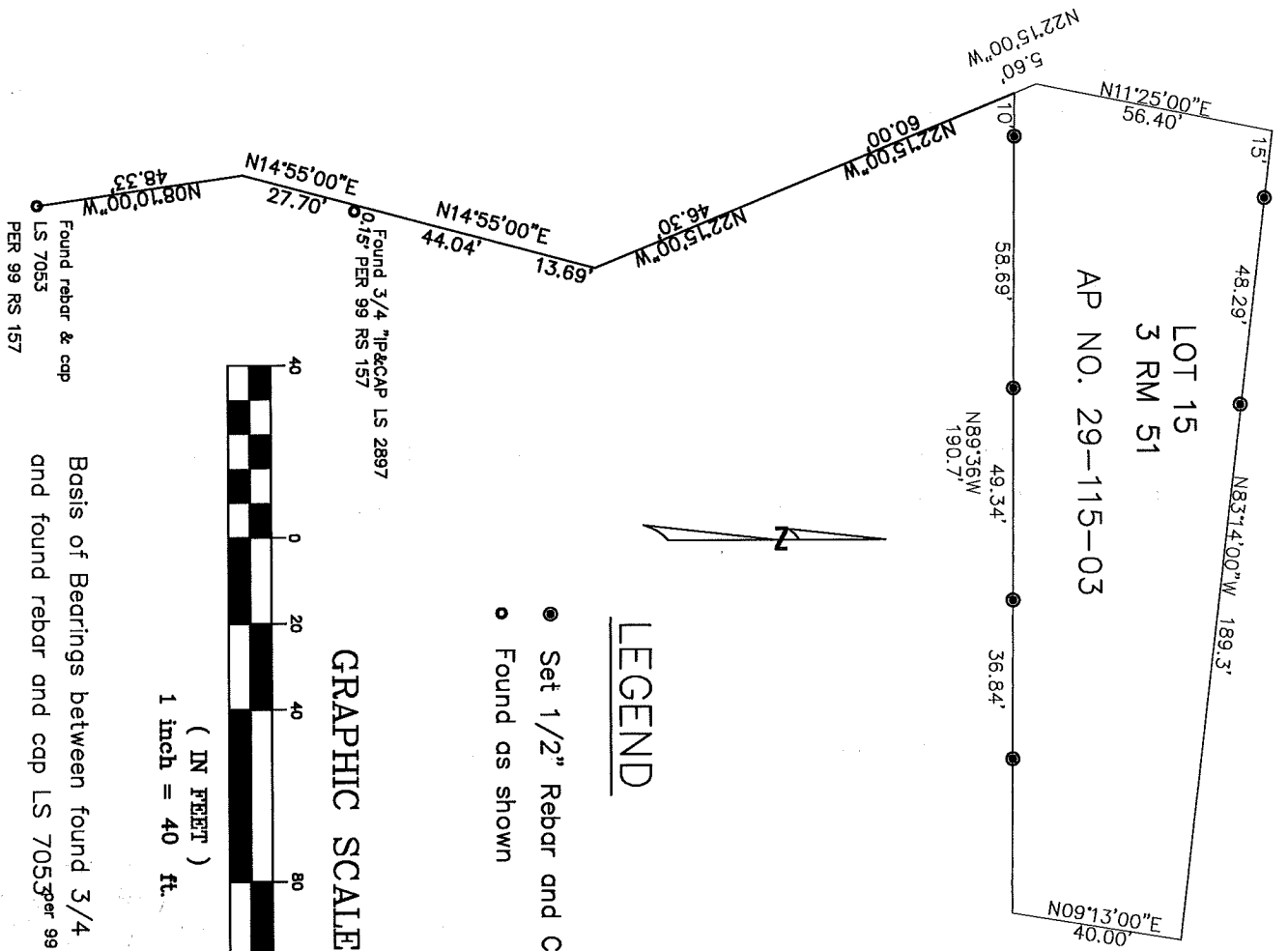
This Corner Record was received SEPTEMBER 25, 2015 and examined and filed FEBRUARY 26, 2016.

Signed [Signature] P.L.S. or R.C.E. No.: 7821

Title County Surveyor

County Surveyor's Comment \_\_\_\_\_

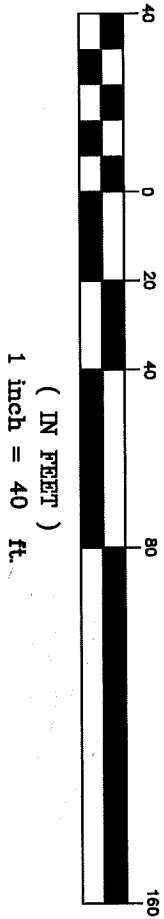




# LEGEND

- Set 1/2" Rebar and Cap LS 6344
- Found as shown

## GRAPHIC SCALE



Basis of Bearings between found 3/4" P&CAP LS 2897 and found rebar and cap LS 7053 per 99 RS 157