

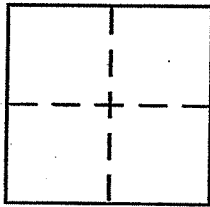
CORNER RECORD

City of MILL VALLEY

Document Number AP 29-115-03

County of MARIN, California

Brief Legal Description LOT 15 3 Rm 51



CORNER TYPE

Government Corner ☐ Control ☐
Meander ☐ Property ☒
Rancho ☐ Other ☐
Date of Survey _____

COORDINATES (Optional)

N. _____
E. _____
Zone _____ NAD27 ☐ NAD83 ☐
NAD83 Epoch _____
Elev. _____
Vert. Datum: NGVD29 ☐ NAVD88 ☐
Meas. Units: Metric ☐ Imperial ☐

Corner - Left as found ☐ Found and tagged ☐ Established ☐ Reestablished ☐ Rebuilt ☐

Identification and type of corner found: Evidence used to identify or procedure used to establish or reestablish the corner:

RETRACEMENT OF 3 Rm 51

A description of the physical condition of the monument as found and as set or reset:

SET 1/2" DIA REBAR & CAP PLS 6344

SURVEYOR'S STATEMENT

This Corner Record was prepared by me or under my direction in conformance with the Land Surveyor's Act on AUG 2010

Signed [Signature] P.L.S or R.C.E. No. 6344

COUNTY SURVEYOR'S STATEMENT

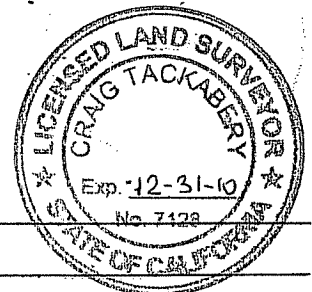
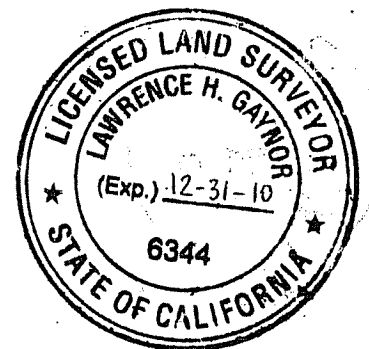
This Corner Record was received SEPTEMBER 29, 2010

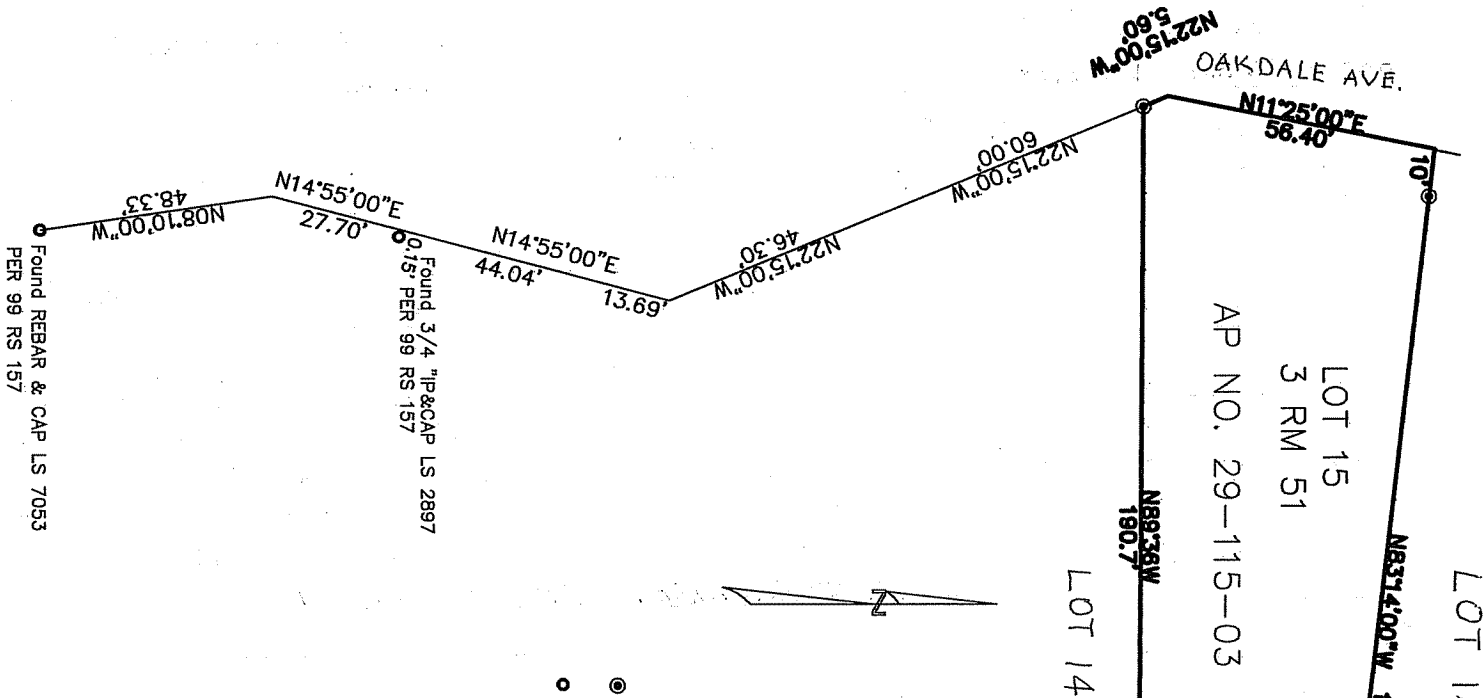
and examined and filed OCTOBER 21, 2010

Signed [Signature] P.L.S or R.C.E. No. 7128

Title COUNTY SURVEYOR

County Surveyor's Comment _____





LEGEND

- Set 1/2" Rebar and Cap LS 634
- Found as shown

