

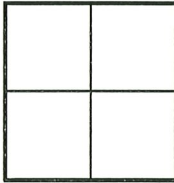
CORNER RECORD

Agency Index

CR22-081Document Number A.P.N. 029-114-24City of MILL VALLEY County of MARIN, CaliforniaBrief Legal Description A PORTION OF LOT 17 GARDER TRACT 1 R.M. 85

CORNER TYPE

COORDINATES(Optional)

Government Corner ☐ Control ☐
Meander ☐ Property ☒
Rancho ☐ Other ☐Date of Survey 5/19/2022

N. _____ E. _____

Elevation _____

Units Metric ☐ U.S. Survey Foot ☒

Horizontal Datum _____

Zone _____ Epoch Date _____

Vertical Datum _____

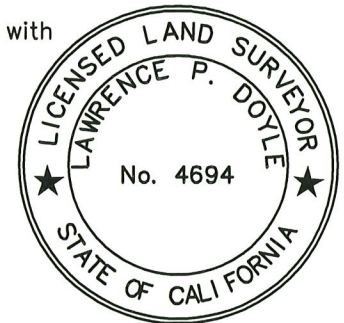
☐ Complies with Public Resources Code §§8801-8819☐ Complies with Public Resources Code §§8890-8902PLS Act Ref.: ☒ 8765(d) ☐ 8771 ☐ 8773 ☐ Other:Corner/Monument: ☐ Left as found ☐ Established ☐ Rebuilt ☐ Pre-Construction☐ Found and tagged ☒ Reestablished ☐ Referenced ☐ Post-Construction

Narrative of corner identified and monument as found, set, reset, replaced, or removed:

☒ See sheet #2 for description(s):

REESTABLISHED A BOUNDARY CORNER SHOWN ON 27 RS 61

SURVEYOR'S STATEMENT

This Corner Record was prepared by me or under my direction in conformance with
the Professional Land Surveyors' Act on JUNE 2, 2022Signed Lawrence P. Doyle P.L.S. No. 4694

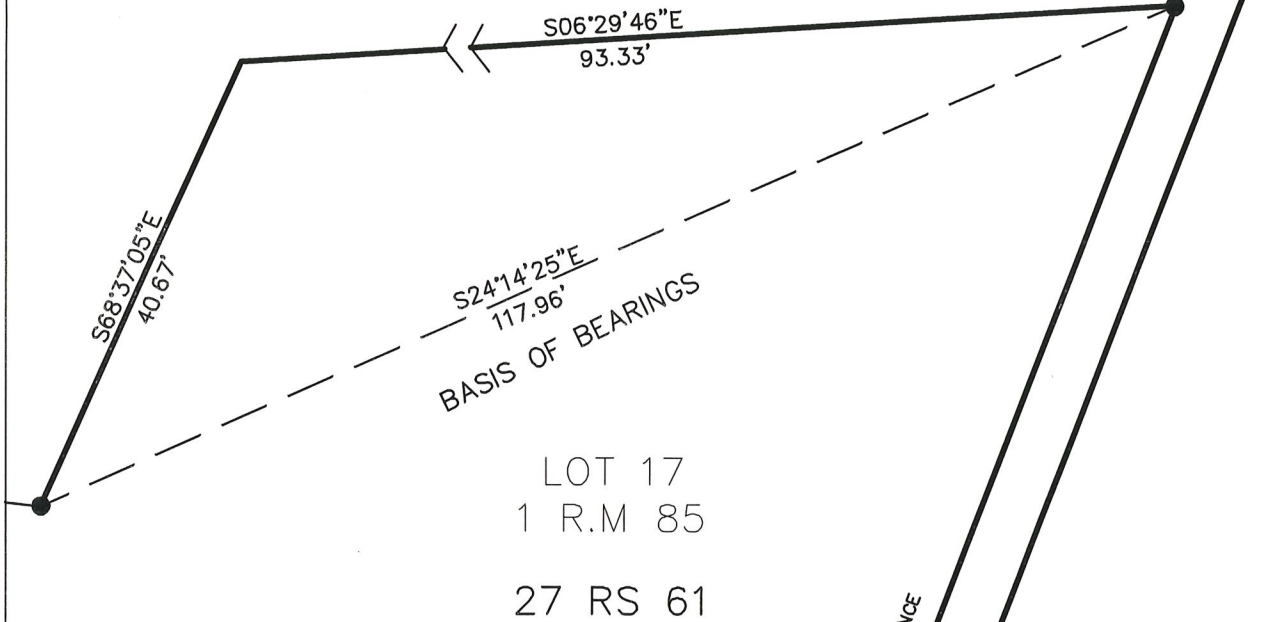
COUNTY SURVEYOR'S STATEMENT

This Corner Record was received 6/15/22and examined and filed 7/13/22Signed T.W. Park P.L.S. or R.C.E. No. 8176Title COUNTY SURVEYOR

County Surveyor's Comment



LANDS OF HATFIELD
A.P.N.029-114-24



LEGEND

- FOUND 3/4" PIPE & PLUG LS 5767
PER 27 RS 61
- SET 3/4" PIPE AND PLUG L.S. 4694
UNLESS NOTED

CORNER RECORD			
27 RS 61			
CITY OF MILL VALLEY	MARIN COUNTY	CALIFORNIA	
1" = 16'	DRAWN BY:		
6/02/22	LAWRENCE P. DOYLE		SHEET 2 OF 2
LAND SURVEYOR/CIVIL ENGINEER			
100 HELENS IANE MILL VALLEY CA 94941 (415-388-9585)			
DRAWING NO.		2998-22	

LANDS OF KOVINSKY
A.P.N.029-114-43

LANDS OF HATFIELD
A.P.N.029-114-24

