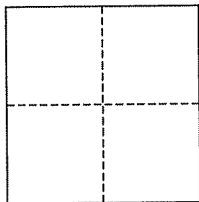


CORNER RECORD

City of Mill Valley

Document Number AP# 029-114-14
County of Marin, California

Brief Legal Description _____



CORNER TYPE

Government Corner ☐ Control ☐
Meander ☐ Property ☒
Rancho ☐ Other ☐
Date of Survey _____

COORDINATES (Optional)

N. _____
E. _____
Zone _____ NAD27 ☐ NAD83 ☐
NAD83 Epoch _____
Elev. _____
Vert. Datum: NGVD29 ☐ NAVD88 ☐
Meas. Units: Metric ☐ Imperial ☐

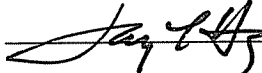
Corner- Left as found ☐ Found and tagged ☐ Established ☒ Reestablished ☐ Rebuilt ☐

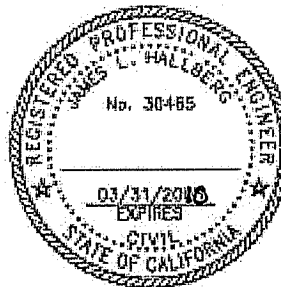
Identification and type of corner found: Evidence used to identify or procedure used to establish or reestablish the corner:
Found Iron Pipe & Plug (LS 5296) and Rebar & Cap (RCE 18200) per 2000 RS 107, as shown and noted.

A description of the physical condition of the monument as found and as set or reset: Set Rebar & Cap (RCE 30465)
as 6' offsets to North-westerly Property Line, and Nail & Tag (RCE 30465) & a Scibed X-cut on Property Line,
as shown and noted.

SURVEYOR'S STATEMENT

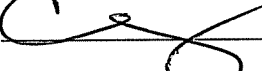
This corner Record was prepared by me or under my direction in conformance with
the Land Surveyor's Act on June 17, 2008

Signed  P.L.S. or R.C.E. No. 30465



COUNTY SURVEYOR'S STATEMENT

This Corner Record was received JUNE 23, 2008
and examined and filed JULY 23, 2008

Signed  P.L.S. or R.C.E. No. 7128
Title COUNTY SURVEYOR



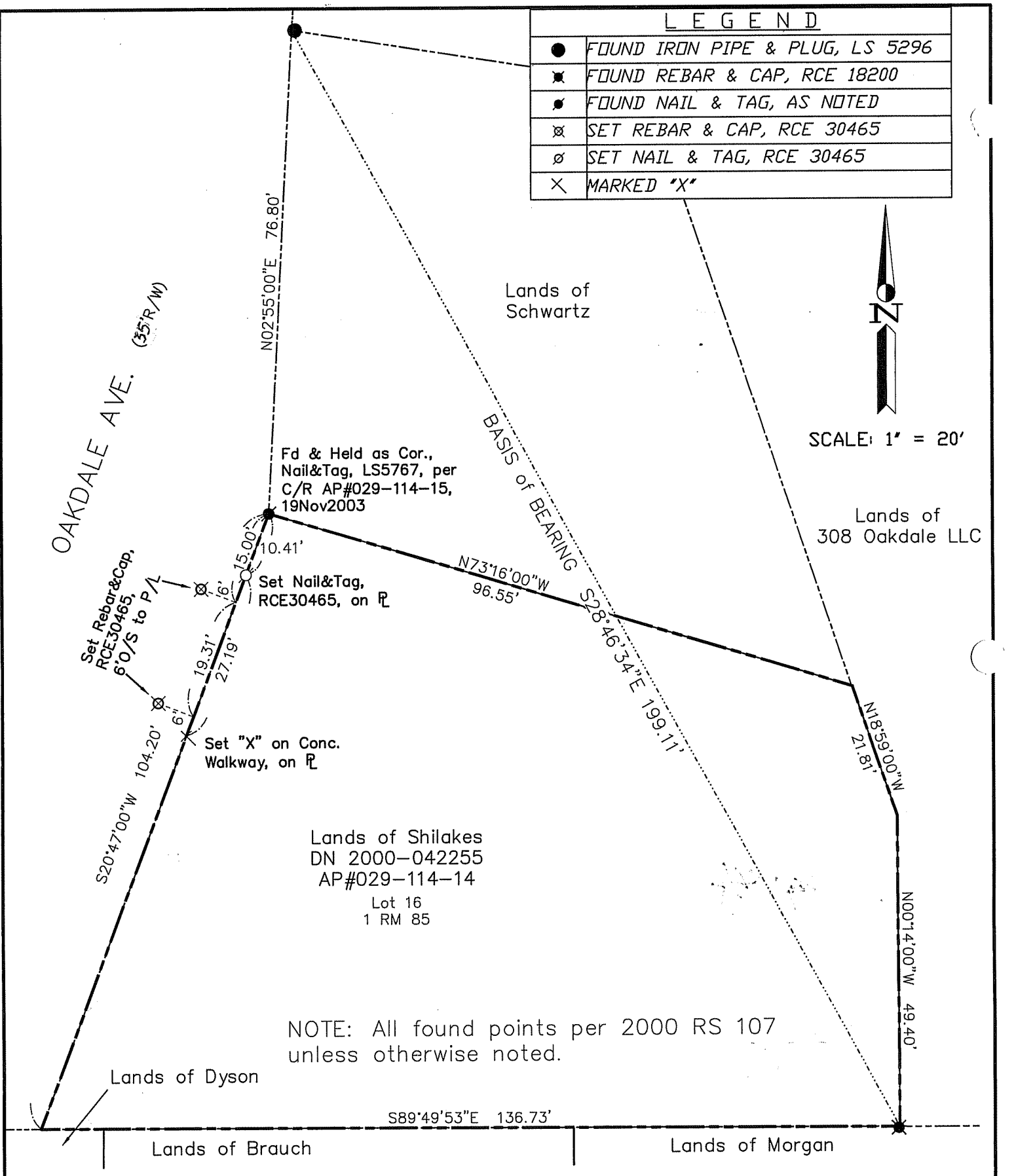
County Surveyor's Comment _____

LEGEND

●	FOUND IRON PIPE & PLUG, LS 5296
✕	FOUND REBAR & CAP, RCE 18200
•	FOUND NAIL & TAG, AS NOTED
⊗	SET REBAR & CAP, RCE 30465
⊘	SET NAIL & TAG, RCE 30465
×	MARKED "X"



SCALE: 1" = 20'



NOTE: All found points per 2000 RS 107 unless otherwise noted.

Note: All distances are in feet and decimals thereof.

SHEET	1	OF	1
SCALE:	1" = 20'	DESIGN:	PR
DATE:	Jun. 2008	DRAWN:	PR
FILE:	2008-043	CHECKED:	J.L.H
2008-043\DWG\08-043_BASE,COR-REC			

J.L. ENGINEERING
 CIVIL ENGINEERS-LAND SURVEYORS
 1539 4th ST., SAN RAFAEL, CA. 94901 (415) 457-6647

Corner Record
 Lands of Shilakes - 104 Oakdale Ave.
 APN 029-114-14, Mill Valley, Marin County, CA