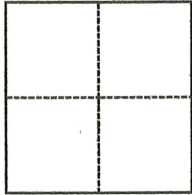


CORNER RECORD

Agency Index CR22-087Document Number APN 029-103-41City of Mill Valley County of Marin, CaliforniaBrief Legal Description As shown on Record of Survey 33 OS 68, MCR**CORNER TYPE**

- ☐ Government Corner ☐ Control
☐ Meander ☒ Property
☐ Rancho ☐ Other

Date of Survey July 14, 2022**COORDINATES (Optional)**N. E. Elevation Units ☐ Metric ☐ U.S. Survey FootHorizontal Datum Zone Epoch Date Vertical Datum ☐ Complies with Public Resources Code §§8801-8819☐ Complies with Public Resources Code §§8890-8902PLS Act Ref.: ☒ 8765(d) ☐ 8771 ☐ 8773 ☐ Other:

Corner/
Monument: ☒ Left as found ☒ Established ☐ Rebuilt ☐ Pre-Construction
☐ Found and tagged ☐ Reestablished ☐ Referenced ☐ Post-Construction

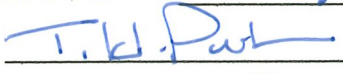
Narrative of corner identified and monument as found, set, reset, replaced, or removed:

☒ See sheet #2 for description(s):

Found rebar & cap PLS 5767 at north and south corners; found iron pipe & cap PLS 5767 at east and west corners. All in good condition. Set hub & tag PLS 7950 on southerly boundary line.

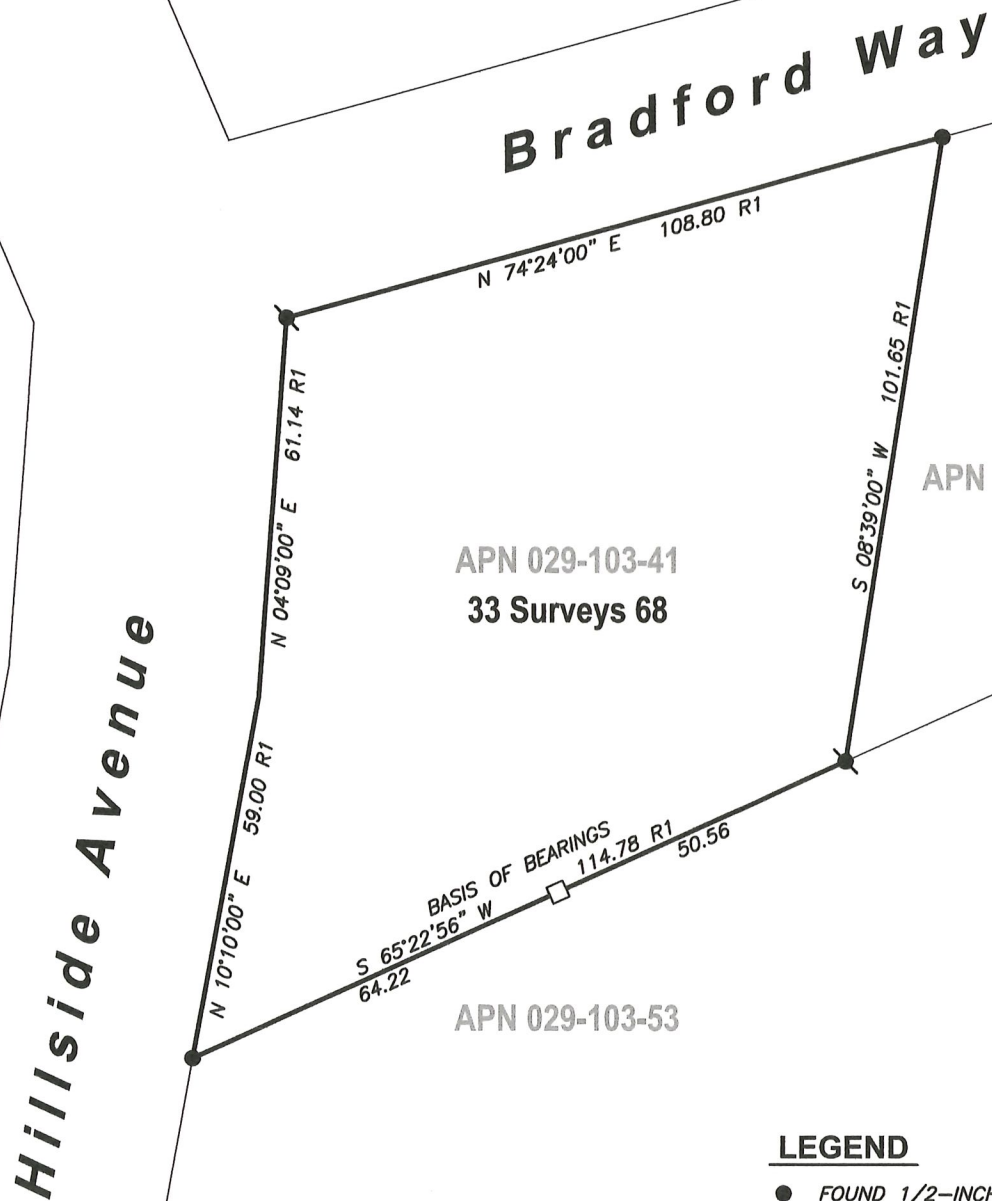
SURVEYOR'S STATEMENT

This Corner Record was prepared by me or under my direction in conformance with

the Professional Land Surveyors' Act on July 25, 2022Signed  P.L.S. or R.C.E. No. 7950**COUNTY SURVEYOR'S STATEMENT**This Corner Record was received 8/1/22and examined and filed 8/3/22Signed  P.L.S. or R.C.E. No. 8176Title County Surveyor

County Surveyor's Comment



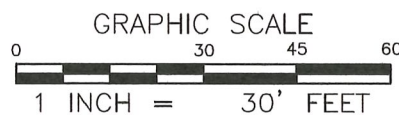
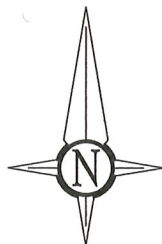
**LEGEND**

● FOUND 1/2-INCH REBAR & RED CAP, PLS 5767 PER R1

⦿ FOUND 3/4-INCH IRON PIPE, RED CAP, PLS 5767 PER R1

□ SET 2X2 HUB, BRASS NAIL & TAG, PLS 7950

R1 RECORD OF SURVEY, FILED IN BOOK 33 OF SURVEYS, AT PAGE 68, MARIN COUNTY RECORDS



J:\22415-McNamara\Dwg\22415CR.dwg

1031Survey, Inc.

HighDefinitionSurveying
1857 Rainier Circle, Petaluma, California, 94954
415-827-6370