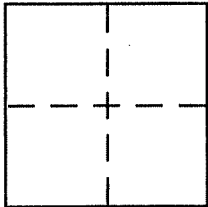


# CORNER RECORD

Document Number APN 29-103-12  
City of Mill Valley County of \_\_\_\_\_, California

Brief Legal Description #113 Hillside Avenue / APN 29-103-12 / PRT LOT 22/23 / RM 85 / 2001 OS 51



## CORNER TYPE

Government Corner ☐ Control ☐  
Meander ☐ Property ☒  
Rancho ☐ Other ☐  
Date of Survey \_\_\_\_\_

## COORDINATES (Optional)

N. \_\_\_\_\_  
E. \_\_\_\_\_  
Zone \_\_\_\_\_ NAD27 ☐ NAD83 ☐  
NAD83 Epoch \_\_\_\_\_  
Elev. \_\_\_\_\_  
Vert. Datum: NGVD29 ☐ NAVD88 ☐  
Meas. Units: Metric ☐ Imperial ☐

Corner - Left as found ☐ Found and tagged ☐ Established ☐ Reestablished ☐ Rebuilt ☐

Identification and type of corner found: Evidence used to identify or procedure used to establish or reestablish the corner:

See back =

Reset lost corner as per 2001 maps 51

A description of the physical condition of the monument as found and as set or reset:

See Back

## SURVEYOR'S STATEMENT

This Corner Record was prepared by me or under my direction in conformance with

the Land Surveyor's Act on August 18 2003

Signed Michael C. Brogan P.L.S. or R.C.E. No. LS 5767



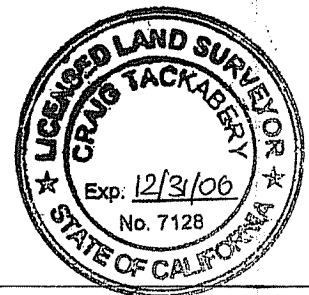
## COUNTY SURVEYOR'S STATEMENT

This Corner Record was received AUGUST 21, 2003

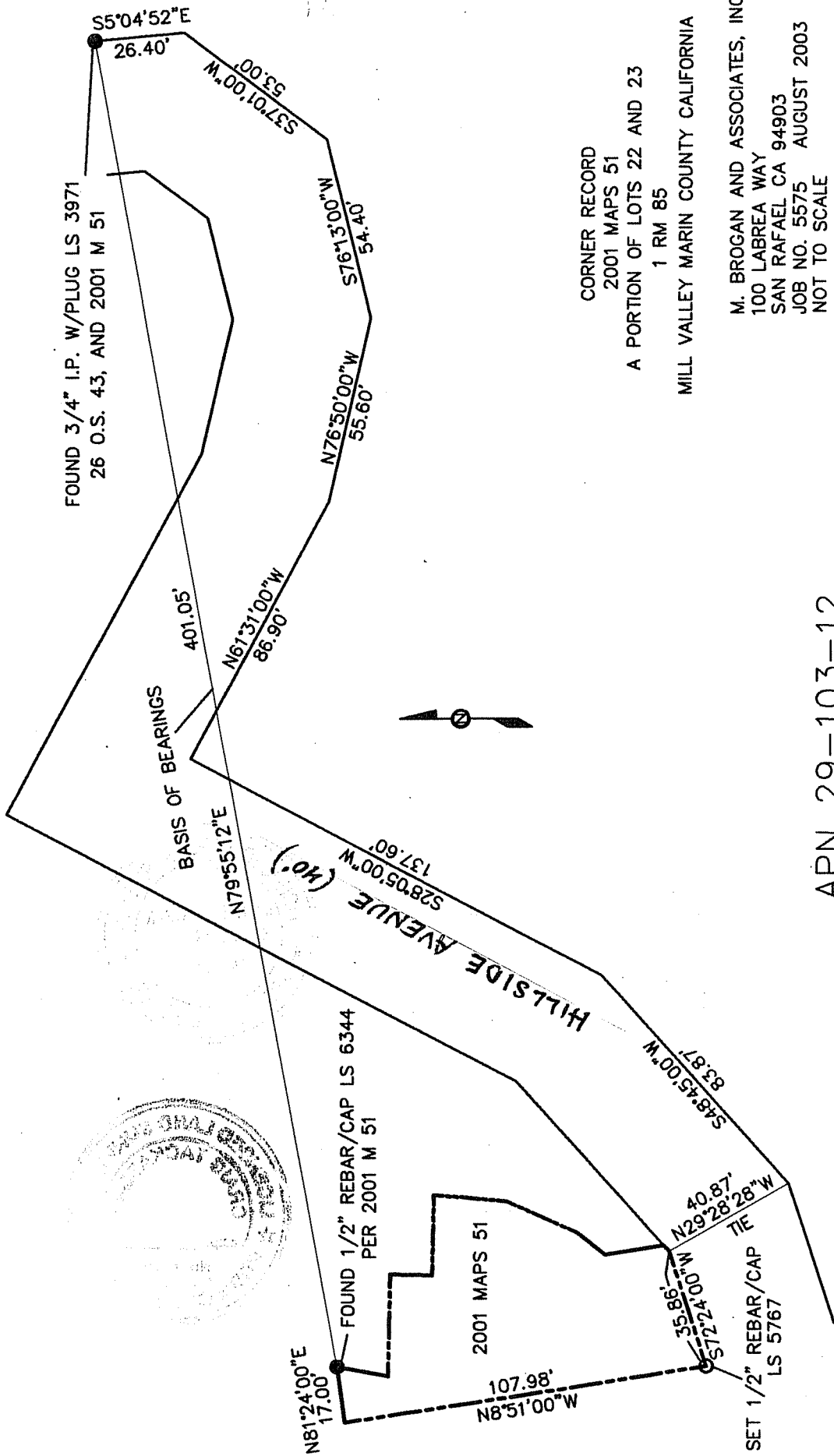
and examined and filed AUGUST 27, 2003

Signed C P.L.S. or R.C.E. No. 7128

Title COUNTY SURVEYOR



County Surveyor's Comment \_\_\_\_\_



APN 29-103-12