

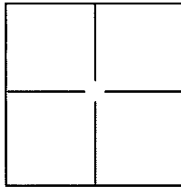
CORNER RECORD

City of MILL VALLEY

Document Number APN 029-102-51

County of MARIN, California

Brief Legal Description "PARCEL TWO," 2016-0028072, O.R.



CORNER TYPE

Government Corner ☐ Control ☐
Meander ☐ Property ☐
Rancho ☐ Other ☒

Date of Survey JANUARY 30, 2017

COORDINATES(Optional)

N. _____
E. _____
Zone _____ NAD27 ☐ NAD83 ☐
NAD83 Epoch _____
Elev. _____
Vert. Datum: NGVD29 ☐ NADV88 ☐
Meas. Units: Metric ☐ Imperial ☒

Corner - Left as found ☐ Found and tagged ☐ Established ☒ Reestablished ☐ Rebuilt ☐

Identification and type of corner found: Evidence used to identify or procedure used to establish or reestablish the corner:

ESTABLISHED NORTHWEST CORNER OF EASEMENT DESCRIBED AS "PARCEL TWO" AS PER 2016-0028072, O.R. BASED ON FOUND MONUMENTATION PER 2006 RS 052.

A description of the physical condition of the monument as found and as set or reset: N/A

SURVEYOR'S STATEMENT

This Corner Record was prepared by me or under my direction in conformance with the Land Surveyor's Act on JANUARY 31, 2017.

Signed Leon E. Oberkammer P.L.S. or R.C.E. No.: 12094



COUNTY SURVEYOR'S STATEMENT

This Corner Record was received FEBRUARY 3, 2017 and examined and filed APRIL 7, 2017.

Signed T.J. Park P.L.S. or R.C.E. No.: 8176

dep. Title COUNTY SURVEYOR

County Surveyor's Comment _____



SURVEYOR'S NOTES:

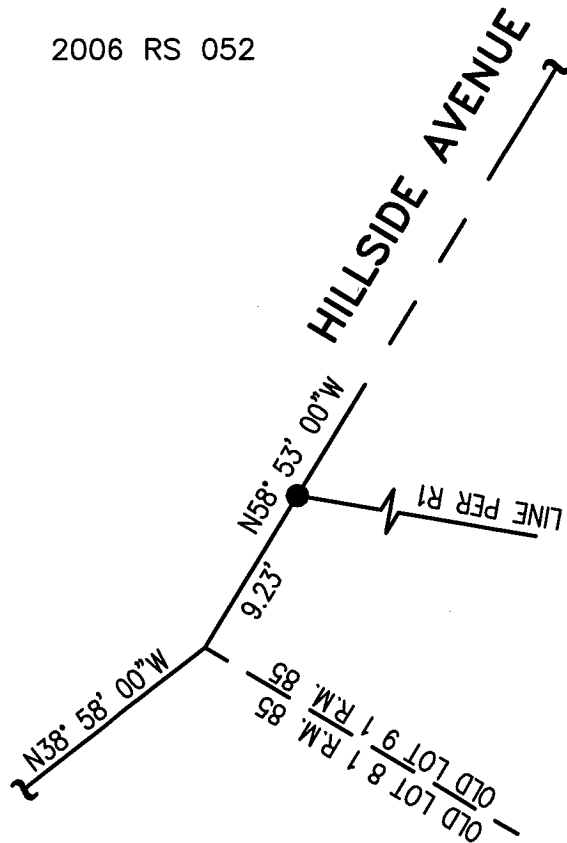
1. ALL DIMENSIONS SHOWN HEREON ARE RECORD & MEASURED PER R1.
2. ALL DISTANCES SHOWN ARE GROUND U.S. SURVEY FEET & DECIMALS THEREOF.

LEGEND

- FOUND REBAR & CAP "RCE 18200" PER R1
- SET LEAD, TACK & TAG "RCE 12094" IN TOP OF NW END OF ROCK WALL
- OR OFFICIAL RECORD
- RCE REGISTERED CIVIL ENGINEER
- RM RECORD MAP
- RS RECORD OF SURVEY
- R1 2006 RS 052



0' 5' 10'
SCALE: 1"=10'



"PARCEL THREE": PARKING AND
PEDESTRIAN INGRESS/EGRESS
EASEMENT PER 2016-0028072, O.R.

R.S. 052

2006

"PARCEL TWO": PARKING AND
PEDESTRIAN INGRESS/EGRESS
EASEMENT PER
2016-0028072, O.R.

OAKDALE AVENUE

**OBERKAMPER & ASSOCIATES
CIVIL ENGINEERS INC.**

7200 REDWOOD BLVD SUITE 308 NOVATO, CA 94945
PHONE (415) 897-2800