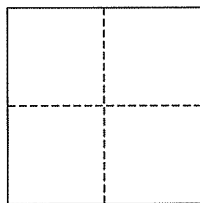


CORNER RECORD

City of Mill Valley

Document Number AP# 029-081-03
County of Marin, California

Brief Legal Description Lots 41-45, 5 RM 8



CORNER TYPE

Government Corner ☐ Control ☐
Meander ☐ Property ☒
Rancho ☐ Other ☐
Date of Survey August 30, 2012

COORDINATES (Optional)

N. _____
E. _____
Zone _____ NAD27 ☐ NAD83 ☐
NAD83 Epoch _____
Elev. _____
Vert. Datum: NGVD29 ☐ NAVD88 ☐
Meas. Units: Metric ☐ Imperial ☐

Corner- Left as found ☐ Found and tagged ☐ Established ☒ Reestablished ☐ Rebuilt ☐

Identification and type of corner found: Evidence used to identify or procedure used to establish or reestablish the corner:
Found Iron Pipe & Plug per 2011 RS 72.

A description of the physical condition of the monument as found and as set or reset: All Property line points were set per 2011 RS 72.

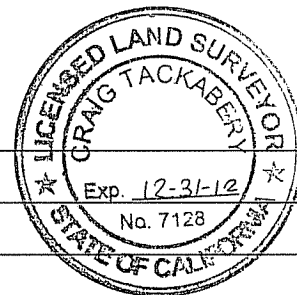
SURVEYOR'S STATEMENT

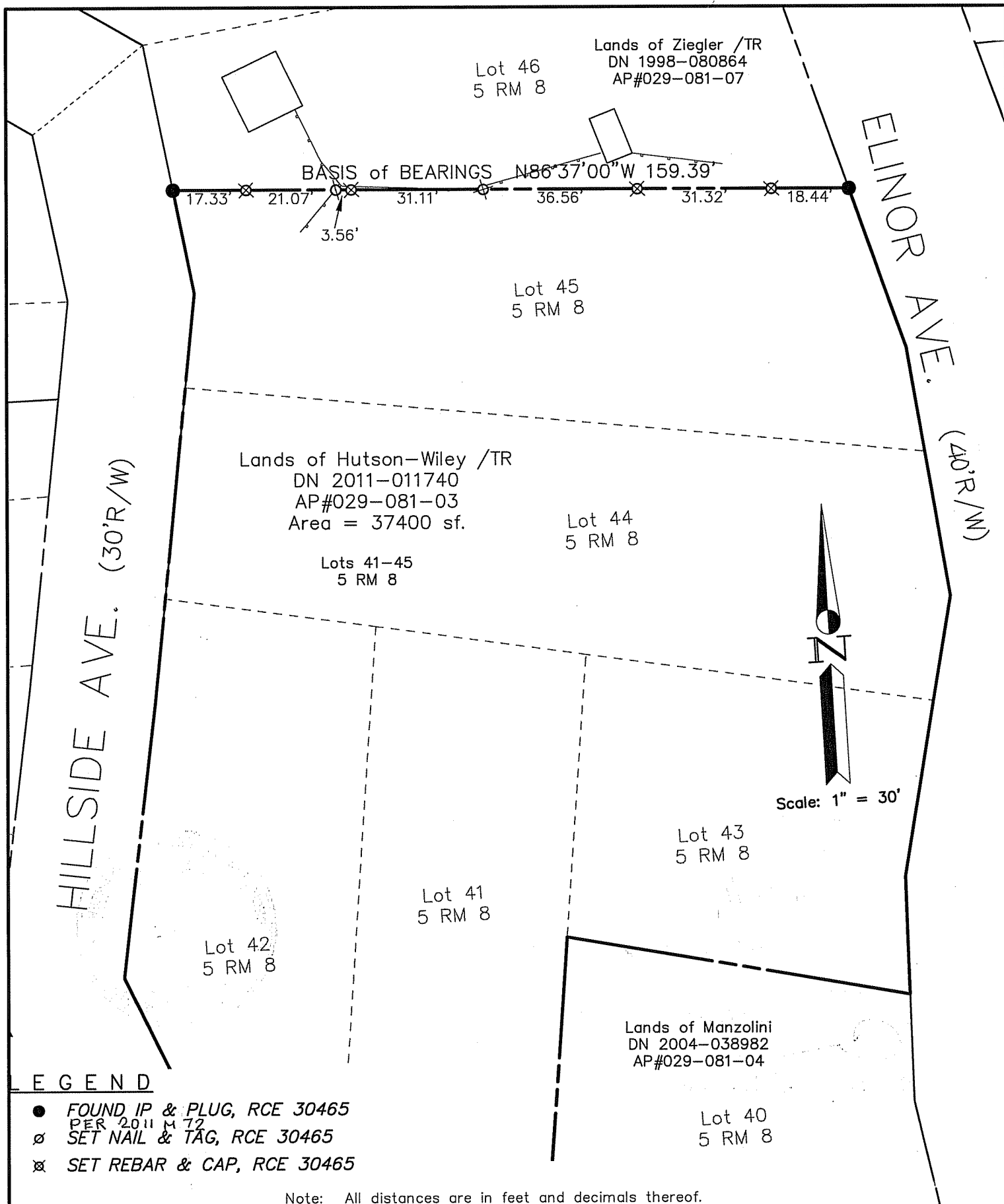
This corner Record was prepared by me or under my direction in conformance with
the Land Surveyor's Act on August 30, 2012
Signed Jay Hallberg P.L.S. or R.C.E. No. 30465

COUNTY SURVEYOR'S STATEMENT

This Corner Record was received SEPTEMBER 12, 2012
and examined and filed OCTOBER 2, 2012
Signed [Signature] P.L.S. or R.C.E. No. 7128
Title COUNTY SURVEYOR

County Surveyor's Comment _____





SHEET	1	OF	1
SCALE:	1" = 30'	DESIGN:	EL
DATE:	Aug 2012	DRAWN:	EL
FILE:	2011-013	CHECKED:	J.L.H
2011-013\DWG\11-013-BASE,COR-REC			

J.L. ENGINEERING
CIVIL ENGINEERS-LAND SURVEYORS
1539 4th ST., SAN RAFAEL, CA. 94901 (415) 457-6647

Corner Record

Lands of Hutson-Wiley /TR - 523 Hillside Ave.
APN 029-081-03, Mill Valley, Marin County, CA