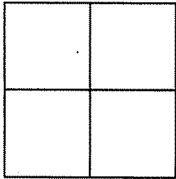


CORNER RECORD

Document Number APN 029-054-19City of MILL VALLEYCounty of Marin California.Brief Legal Description: LANDS OF MARTIN, AS PER D. N. 12-0176172

CORNER TYPE:

Government Corner ☐ Control ☐
Meander ☐ Property ☒
Rancho ☐ Other ☐
Date of Survey JULY 11, 2012

COORDINATES [Optional]

N> _____
E> _____
Zone _____ Datum _____
Elev> _____

CORNER:----- Left as found ☐ Found & Tagged ☐ Established ☒ Reestablished ☐ Rebuilt ☐

Identification & Type of Corner Found: Evidence used to identify or procedure used to establish or reestablish the corner:

FND. EXISTING MONS. PER 2001 OS 144

A description of the physical condition of the monument as found and as set or reset:

SET 5/8" REBAR & CAP, RCE# 18200 AT LOCATIONS SHOWN ON REVERSE.

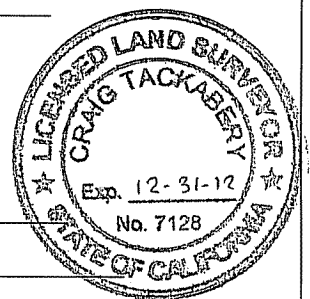
SURVEYOR'S STATEMENT

The corner record was prepared by me or under my direction in conformance with
the Land Surveyors' Act on JULY 16, 2012

Signed: Douglas J. Matteson PLS or RCE # 18200

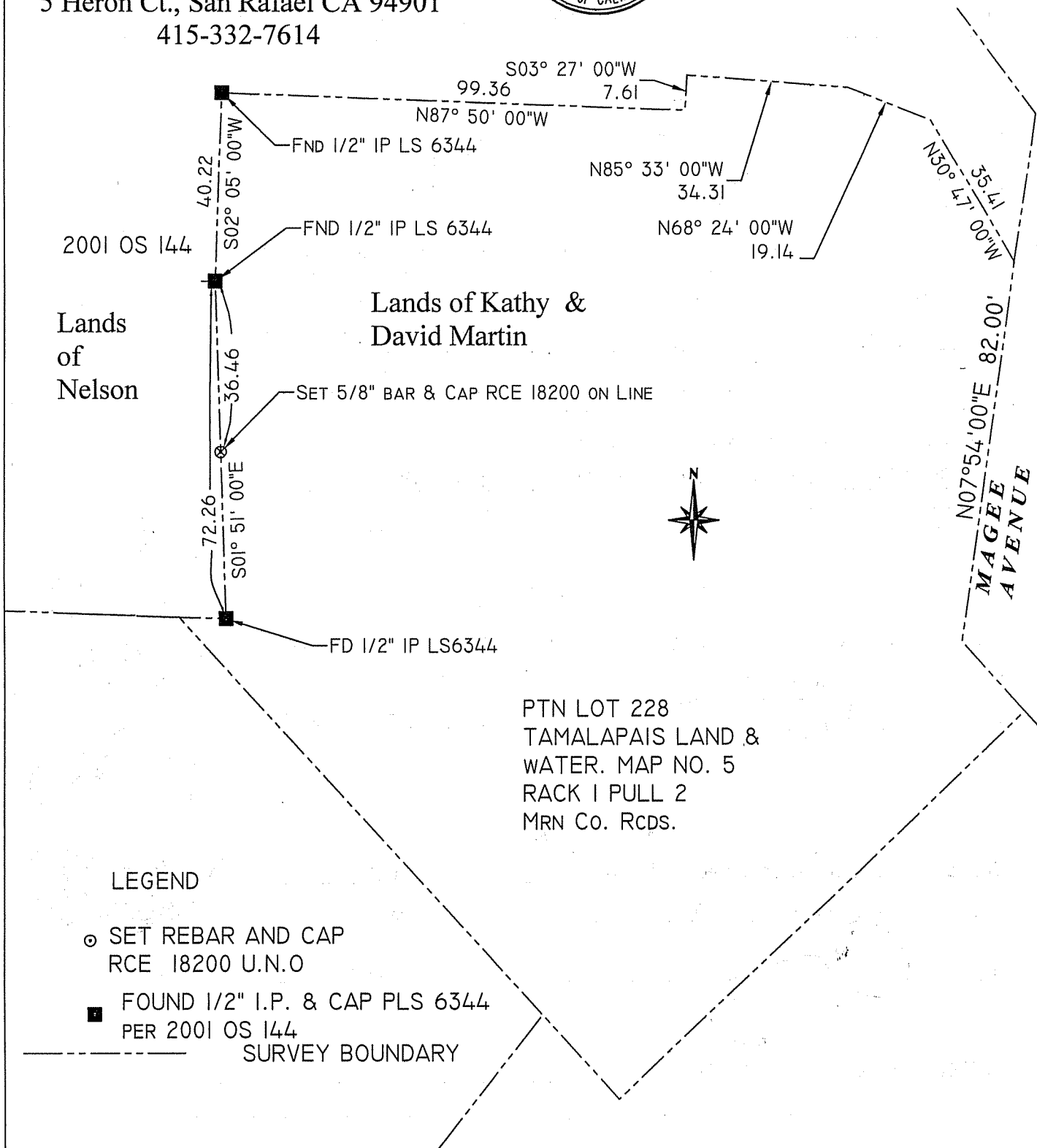
COUNTY SURVEYORS STATEMENT

This corner record was received: JULY 18, 2012
and examined and filed SEPTEMBER 12, 2012

Signed:  Title: COUNTY SURVEYOR

COUNTY SURVEYOR'S COMMENT _____

Map Showing point set on
 Martin Property Line
 July 11, 2012 Scale 1"=30'
 DJ MATTESON CIVIL ENGINEER
 5 Heron Ct., San Rafael CA 94901
 415-332-7614



LEGEND

⊗ SET REBAR AND CAP
 RCE 18200 U.N.O

■ FOUND 1/2" I.P. & CAP PLS 6344
 PER 2001 OS 144

----- SURVEY BOUNDARY