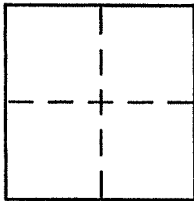


CORNER RECORD

Document Number APN 029-053-31
County of _____, California

City of MILL VALLEY

Brief Legal Description LANDS OF ADLER PER 2000 Maps 81



CORNER TYPE

Government Corner ☐ Control ☐
Meander ☐ Property ☐
Rancho ☐ Other ☐
Date of Survey 07-28-11

COORDINATES (Optional)

N. _____
E. _____
Zone _____ NAD27 ☐ NAD83 ☐
NAD83 Epoch _____
Elev. _____
Vert. Datum: NGVD29 ☐ NAVD88 ☐
Meas. Units: Metric ☐ Imperial ☐

Corner - Left as found ☐ Found and tagged ☐ Established ☐ Reestablished ☐ Rebuilt ☐

Identification and type of corner found: Evidence used to identify or procedure used to establish or reestablish the corner:

See page 2 of 2

A description of the physical condition of the monument as found and as set or reset:

See page 2 of 2

SURVEYOR'S STATEMENT

This Corner Record was prepared by me or under my direction in conformance with the Land Surveyor's Act on 8/16 2011

Signed [Signature] P.L.S. or R.C.E. No. 6784



COUNTY SURVEYOR'S STATEMENT

This Corner Record was received 8-18-2011

and examined and filed SEPTEMBER 14, 2011

Signed [Signature] P.L.S. or R.C.E. No. 7128

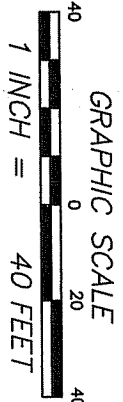
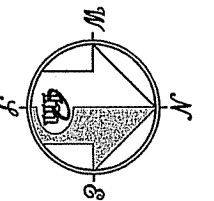
Title COUNTY SURVEYOR

County Surveyor's Comment _____



LEGEND

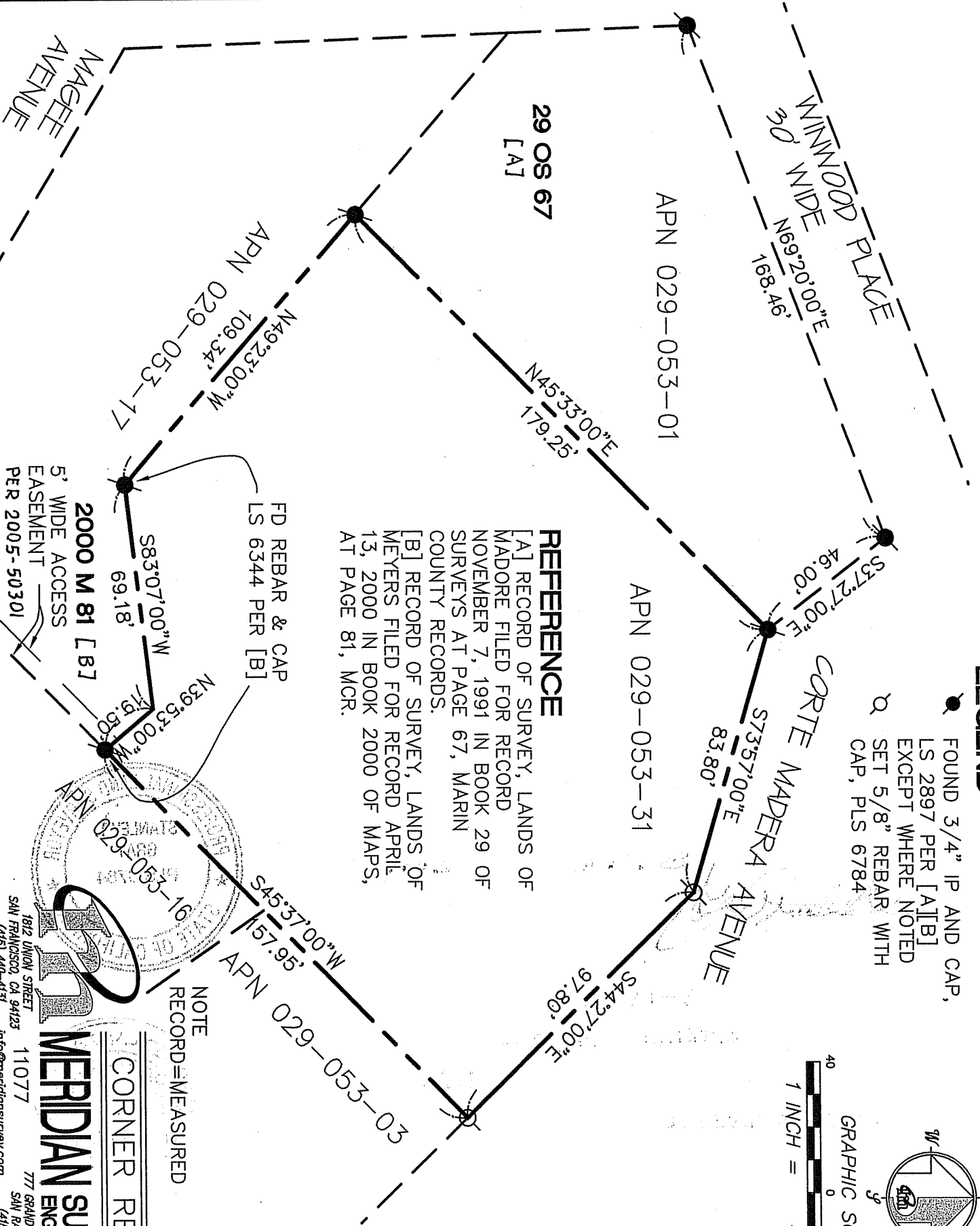
- FOUND 3/4" IP AND CAP, LS 2897 PER [A][B] EXCEPT WHERE NOTED
- SET 5/8" REBAR WITH CAP, PLS 6784



REFERENCE

[A] RECORD OF SURVEY, LANDS OF MADORE FILED FOR RECORD NOVEMBER 7, 1991 IN BOOK 29 OF SURVEYS AT PAGE 67, MARIN COUNTY RECORDS.

[B] RECORD OF SURVEY, LANDS OF MEYERS FILED FOR RECORD APRIL 13, 2000 IN BOOK 2000 OF MAPS, AT PAGE 81, MCR.



NOTE
RECORD=MEASURED

CORNER RECORD

MERIDIAN SURVEYING, INC.
1812 UNION STREET
SAN FRANCISCO, CA 94123
(415) 440-4131
info@meridiansurvey.com

777 GRAND AVENUE, SUITE 202
SAN RAFAEL, CA 94901
(415) 456-5450