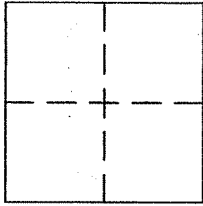


CORNER RECORD
MILL VALLEY

Document Number APN 029-043-59
County of MARIN, California

Brief Legal Description LOT 317 & PTN. 316, 4 RM 20, CUSHING'S SUBDIV. MAP No.3



CORNER TYPE

Government Corner ☐ Control ☐
Meander ☐ Property ☒
Rancho ☐ Other ☐
Date of Survey 10-1-10

COORDINATES (Optional)

N. _____
E. _____
Zone _____ NAD27 ☐ NAD83 ☐
NAD83 Epoch _____
Elev. _____
Vert. Datum: NGVD29 ☐ NAVD88 ☐
Meas. Units: Metric ☐ Imperial ☐

Corner - Left as found ☐ Found and tagged ☐ Established ☒ Reestablished ☐ Rebuilt ☐

Identification and type of corner found: Evidence used to identify or procedure used to establish or reestablish the corner:

FOUND 3/4" IRON PIPE MONUMENTS, LS 3971, AS SHOWN ON 23 OS 55 AND ON REVERSE

A description of the physical condition of the monument as found and as set or reset:

SET REBARS W/CAP, PLS 5296 AND 2x2 HUB & TAG, PLS 5296, AS SHOWN ON REVERSE

SURVEYOR'S STATEMENT

This Corner record was prepared by me or under my direction in conformance with
the Land Surveyor's Act on NOVEMBER 9, 2010

Signed [Signature] P.L.S. or R.C.E. No. PLS 5296

COUNTY SURVEYOR'S STATEMENT

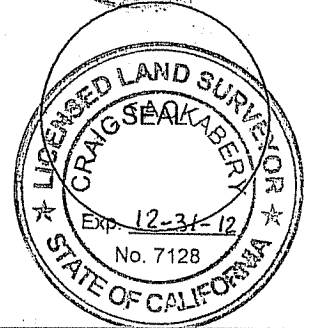
This Corner Record was received JANUARY 20, 2011

and examined and filed FEBRUARY 15, 2011

Signed [Signature] P.L.S. or R.C.E. No. 7128

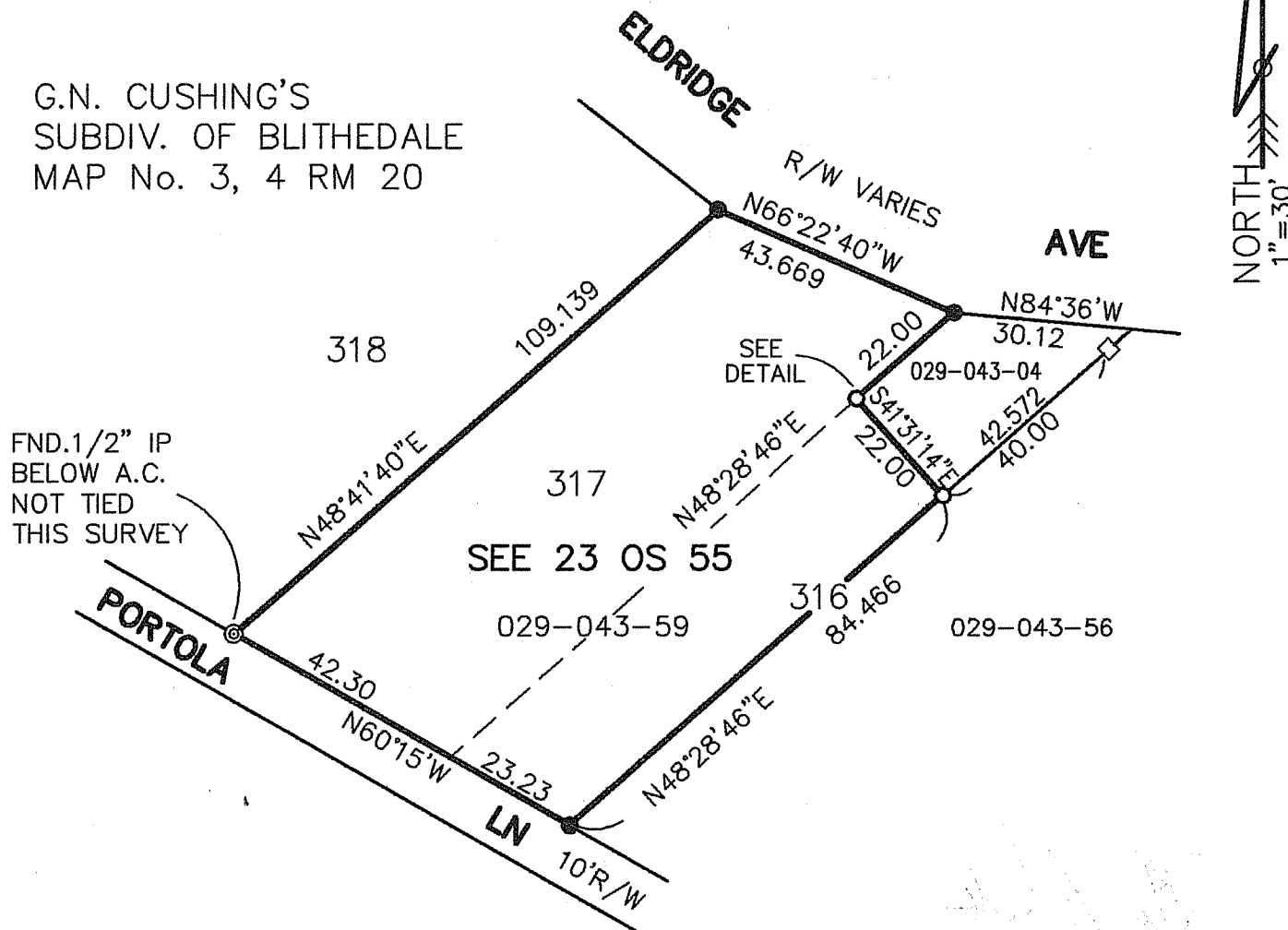
Title COUNTY SURVEYOR

County Surveyor's Comment _____

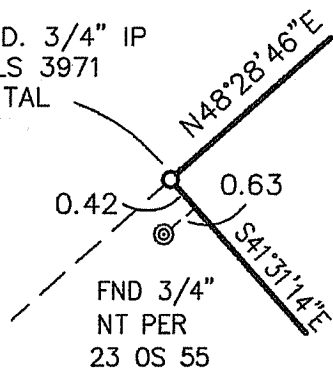


NOTE: BOUNDARY SHOWN PER 23 OS 55

G.N. CUSHING'S
SUBDIV. OF BLITHEDALE
MAP No. 3, 4 RM 20



NOTE: FND. 3/4" IP
& TAG LS 3971
HORIZONTAL



DETAIL
NTS

LEGEND

- FND 3/4" IP LS 3971 PER 23 OS 55
- SET REBAR & CAP PLS 5296
- SET HUB & TAG PLS 5296
- AC ASPHALTIC CONCRETE
- NT NO TAG
- NTS NOT TO SCALE
- IP IRON PIPE