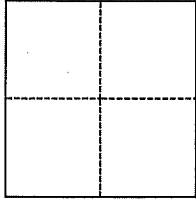


# CORNER RECORD

Agency Index DPW #18-028Document Number 029-043-05 & 16City of Mill Valley County of Marin, CaliforniaBrief Legal Description North side of Portola Lane, as shown on 1999 RS 165, Marin County Records**CORNER TYPE****COORDINATES (Optional)**

- ☐ Government Corner ☐ Control  
☐ Meander ☒ Property  
☐ Rancho ☐ Other

Date of Survey March 19, 2018

N. \_\_\_\_\_ E. \_\_\_\_\_

Elevation \_\_\_\_\_

Units ☐ Metric ☐ U.S. Survey Foot

Horizontal Datum \_\_\_\_\_

Zone \_\_\_\_\_ Epoch Date \_\_\_\_\_

Vertical Datum \_\_\_\_\_

☐ Complies with Public Resources Code §§8801-8819☐ Complies with Public Resources Code §§8890-8902PLS Act Ref.: ☐ 8765(d) ☒ 8771 ☐ 8773 ☐ Other:

Corner/  
Monument: ☐ Left as found ☐ Established ☐ Rebuilt ☒ Pre-Construction  
☐ Found and tagged ☒ Reestablished ☐ Referenced ☒ Post-Construction

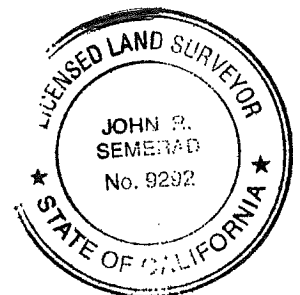
Narrative of corner identified and monument as found, set, reset, replaced, or removed:

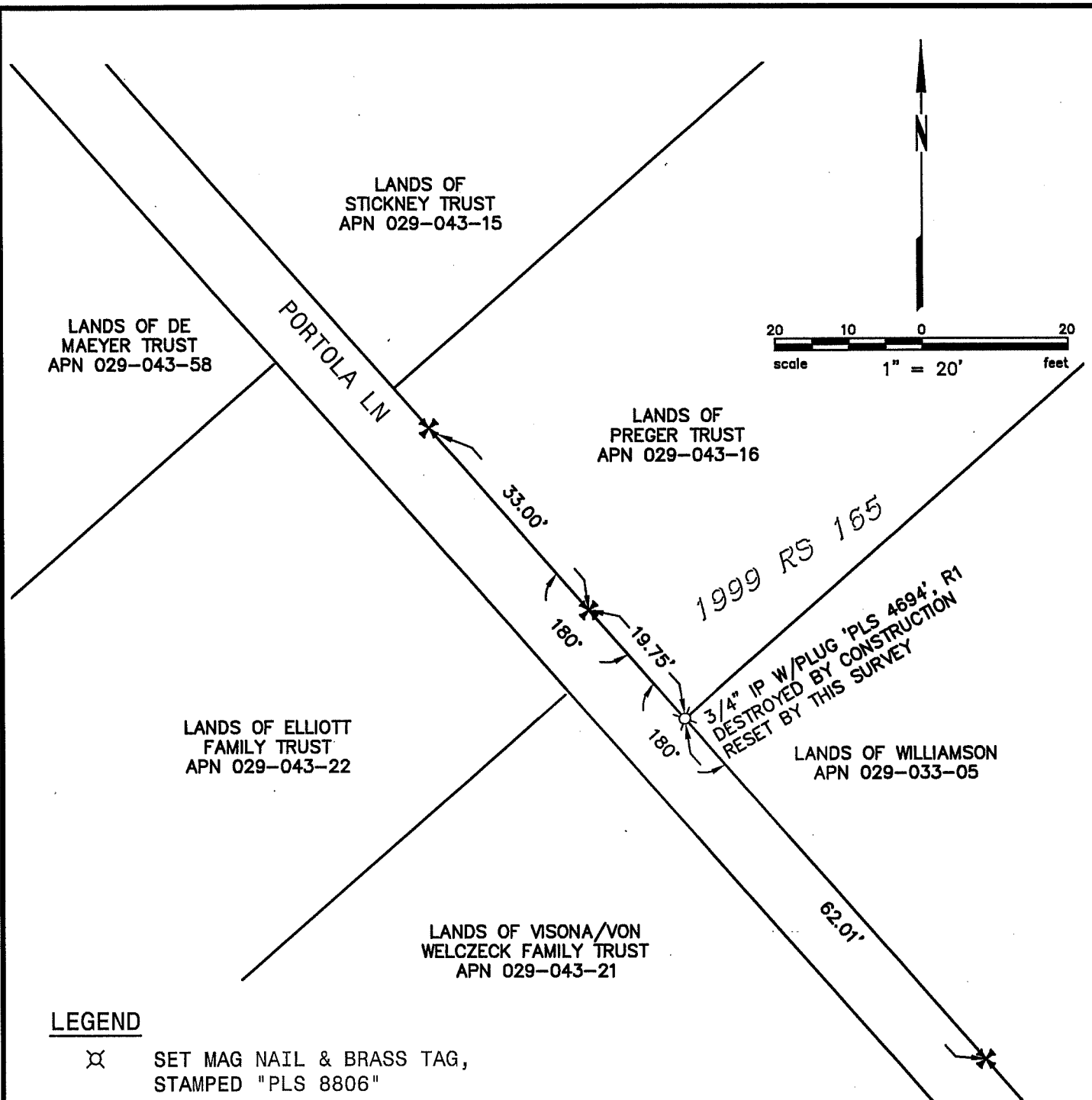
☒ See sheet #2 for description(s):**SURVEYOR'S STATEMENT**

This Corner Record was prepared by me or under my direction in conformance with

the Professional Land Surveyors' Act on March 8, 2019Signed [Signature] P.L.S. or R.C.E. No. 8806**COUNTY SURVEYOR'S STATEMENT**This Corner Record was received MAY 7, 2018and examined and filed APR. 15, 2019Signed [Signature] P.L.S. or R.C.E. No. 9292Title DEPUTY C.S.

County Surveyor's Comment





## LEGEND

- ⊗ SET MAG NAIL & BRASS TAG,  
STAMPED "PLS 8806"
- ✕ SET SCRIBED 'X' (REFERENCE POINT  
PRIOR TO MONUMENT DISTURBANCE)

## REFERENCES

R1 RECORD OF SURVEY; 1999 RS 165

## NOTE

SCRIBED X'S SHOWN HERE ON ARE RANDOM AND NOT INTENDED TO REPRESENT BOUNDARY LINE. BOUNDARY LINE SHOWN FOR CONTEXT ONLY.

165213\_PORTOLA-CR.dwg

COPYRIGHT © 2019 BKF ENGINEERS



# BKF

ENGINEERS / SURVEYORS / PLANNERS  
4040 CIVIC CENTER DR, STE. 530 SAN RAFAEL, CA 94903  
(415) 930-7980 FAX: (415) 930-7979