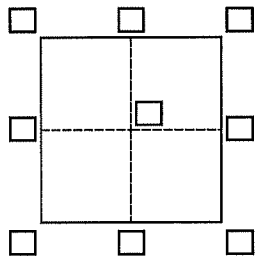


# CORNER RECORD

Agency Index

Document Number

DRW#19-090

City of Mill Valley County of Marin, CaliforniaBrief Legal Description Lot 55, 4 RM 109**CORNER TYPE**Government Corner ☐ Control ☐  
Meander ☐ Property ☒  
Rancho ☐ Other ☐Date of Survey July 16, 2019**COORDINATES (Optional)**N.                      E.                     Elevation                     Units ☒ Metric ☐ U.S. Survey Foot ☐Horizontal Datum                     Zone                      Epoch Date                     Vertical Datum                     ☐ Complies with Public Resources Code §§8801-8819☐ Complies with Public Resources Code §§8890-8902PLS Act Ref.: ☐ 8765(d) ☒ 8771 ☐ 8773 ☐ Other:Corner/  
Monument: ☐ Left as found ☒ Established ☐ Rebuilt ☐ Pre-Construction  
☐ Found and tagged ☐ Reestablished ☐ Referenced ☐ Post-Construction

Narrative of corner identified and monument as found, set, reset, replaced, or removed:

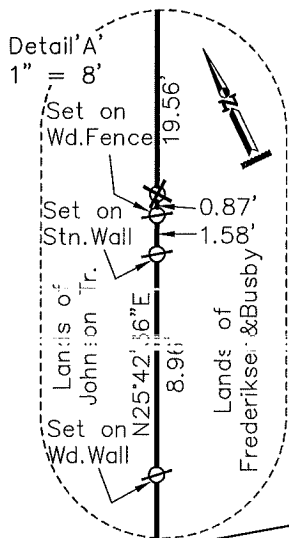
☒ See sheet #2 for description(s):**SURVEYOR'S STATEMENT**

This Corner Record was prepared by me or under my direction in conformance with

the Professional Land Surveyors' Act on July 25, 2019Signed Jay C. Spay P.L.S. or R.C.E. No. 30465**COUNTY SURVEYOR'S STATEMENT**This Corner Record was received July 30, 2019and examined and filed SEP. 04, 2019Signed J. R. Semrad P.L.S. or R.C.E. No. 9292Title DEPUTY C.S.

County Surveyor's Comment

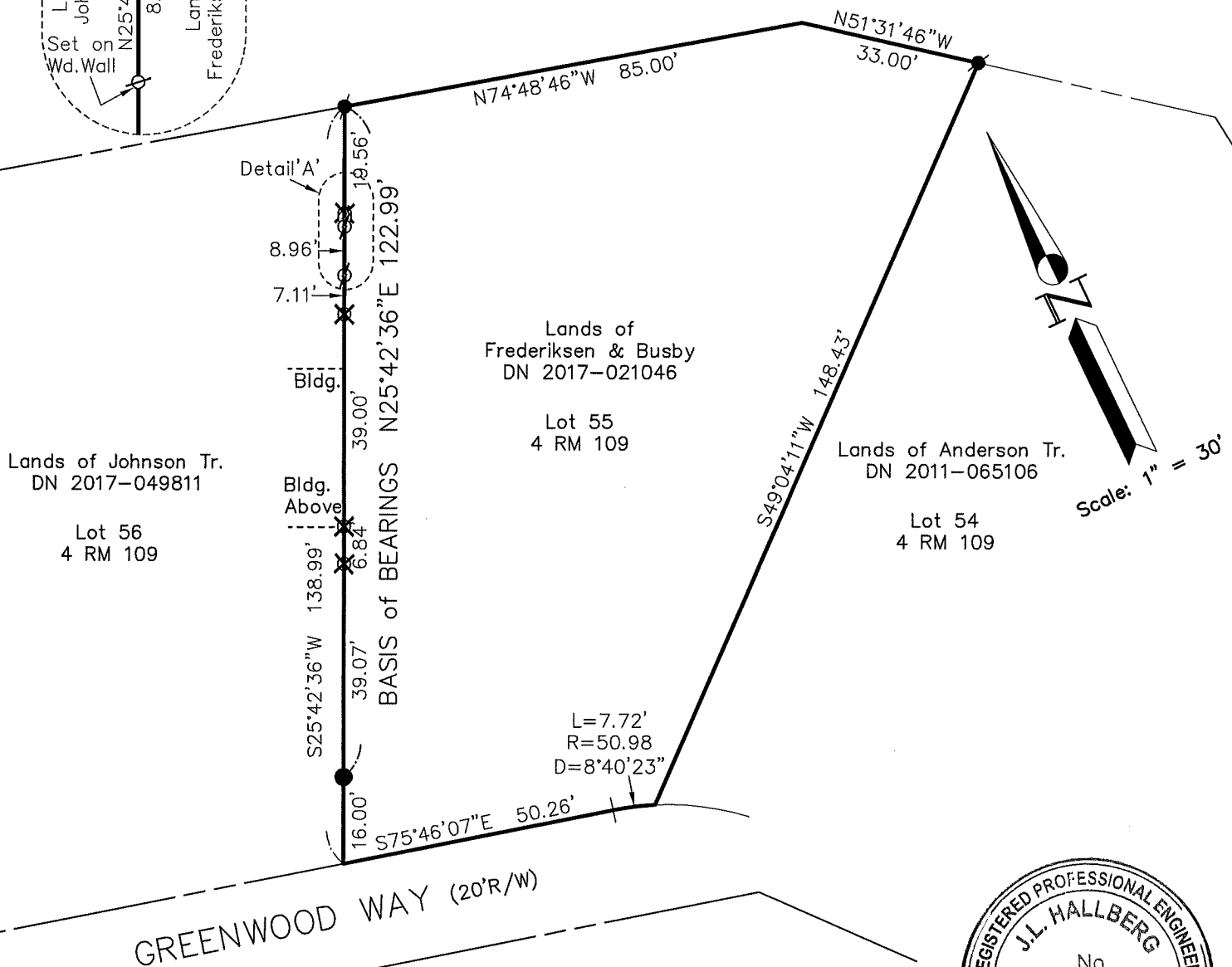




# LEGEND

- FOUND IP & ALUM CAP, LS 6649, PER 2015 RS 51
- FOUND NAIL & TAG, LS 6649, PER 2015 RS 51
- ✕ SET REBAR & CAP, RCE 30465
- ∅ SET NAIL & TAG, RCE 30465

1/1 PM 04



Note: All distances are in feet and decimals thereof.

## Linetype Legend

—	Subject parcel
- - -	Parcel boundary
- - -	Old boundary, easement
- - -	Boundary tie
- - -	Right of Way center-line
✕ ✕ ✕ ✕ ✕	Fence
- - -	Basis of Bearings

Date: Jul 2019 Scale: 1" = 30'

J.L. ENGINEERING  
1539 4th ST.  
San Rafael, CA. 94901  
(415) 457-6647

## Corner Record

Lands Frederiksen&Busby-54 Greenwood Way  
APN 029-035-08, Mill Valley, Marin County, CA  
Sheet: 1 of 2

2019-039\DWG\2019-039-BASE,CREC