

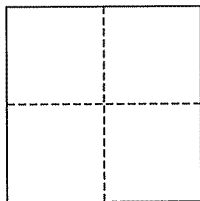
CORNER RECORD

City of Mill Valley

Document Number 029-034-02

County of Marin, California

Brief Legal Description Lots 2 & a Portion of 4, 4 RM 109 (2002 RS 231)



CORNER TYPE

Government Corner ☐ Control ☐
Meander ☐ Property ☒
Rancho ☐ Other ☐
Date of Survey October 9, 2007

COORDINATES (Optional)

N. _____
E. _____
Zone _____ NAD27 ☐ NAD83 ☐
NAD83 Epoch _____
Elev. _____
Vert. Datum: NGVD29 ☐ NAVD88 ☐
Meas. Units: Metric ☐ Imperial ☐

Corner- Left as found ☐ Found and tagged ☐ Established ☐ Reestablished ☒ Rebuilt ☐

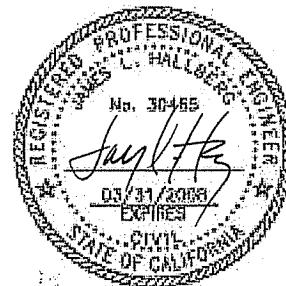
Identification and type of corner found: Evidence used to identify or procedure used to establish or reestablish the corner:
Found Iron Pipe & Plug (LS 6649) as shown, per 2002 RS 231.

A description of the physical condition of the monument as found and as set or reset: Set intermediate line points, Iron Pipe & Plug (RCE 30465) as shown, per 2002 RS 231.

SURVEYOR'S STATEMENT

This corner Record was prepared by me or under my direction in conformance with
the Land Surveyor's Act on Dec 17, 2007

Signed Jay L. Hallberg P.L.S. or R.C.E. No. 30465



COUNTY SURVEYOR'S STATEMENT

This Corner Record was received SEPTEMBER 10, 2007
and examined and filed JANUARY 2, 2008

Signed Craig Tackabery P.L.S. or R.C.E. No. 7128

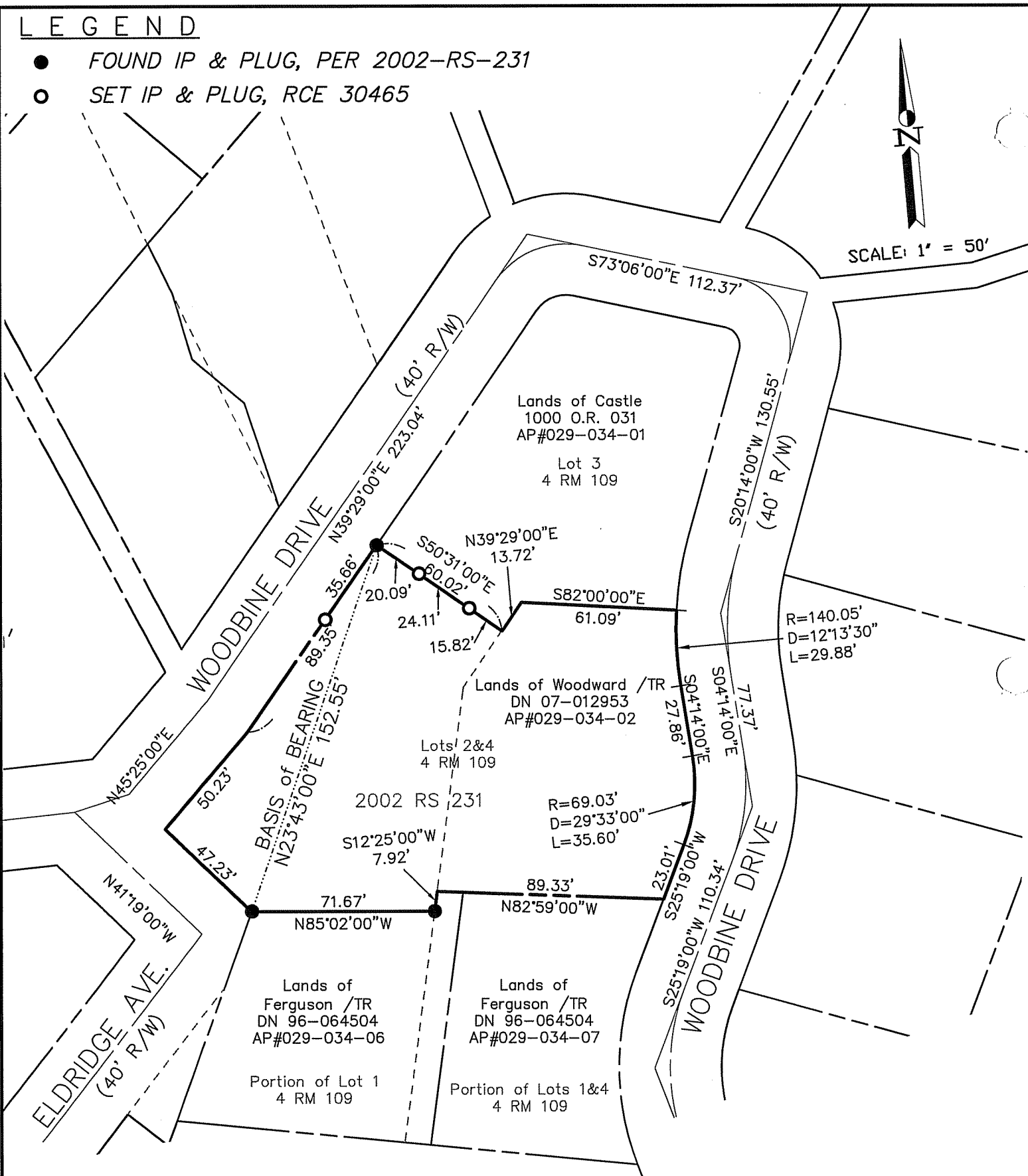
Title COUNTY SURVEYOR



County Surveyor's Comment _____

LEGEND

- FOUND IP & PLUG, PER 2002-RS-231
- SET IP & PLUG, RCE 30465



Note: All distances are in feet and decimals thereof.

SHEET	1	OF	1
SCALE:	1" = 50'	DESIGN:	P.R.
DATE:	Dec. 2007	DRAWN:	P.R.
FILE:	2004-016	CHECKED:	J.L.H
2004-016\DWG\ROS-CR.DWG,COR-REC			

J.L. ENGINEERING
CIVIL ENGINEERS-LAND SURVEYORS
 1539 4th ST., SAN RAFAEL, CA. 94901 (415) 457-6647

Corner Record

Lands of Woodward - 121 Woodbine Drive
 APN 029-034-02, Mill Valley, Marin County, CA