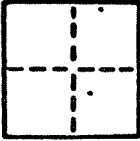


CORNER RECORD

COUNTY OF Marin T. R. MERIDIAN CALIFORNIA
 CORNER TYPE: GOVT. CORNER ☐ MEANDER ☐ RANCHO ☐ CONTROL ☐ OTHER ☒
 CORNER IDENTIFICATION — DATE OF VISIT June 19 88



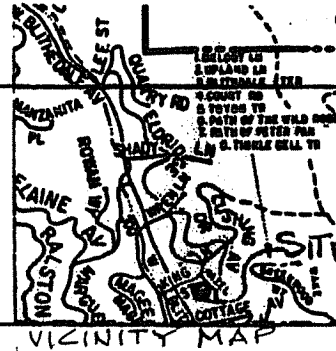
CORNER — LEFT AS FOUND ☐ FOUND AND TAGGED ☐ REESTABLISHED OBLITERATED CORNER ☐ RESULT ☒

PHYSICAL DESCRIPTION OF CORNER FOUND; EVIDENCE AND METHOD USED TO IDENTIFY OR REESTABLISH

Basis of bearing is S 46° 27' W between found survey points as shown.
 Being a portion of Lots 26 & 27 as shown on Map of "S.B. Cushing's
 Subdivision of Blithedale Map No. 1", 1 R.M. 128, Mill Valley, Marin
 County, California.

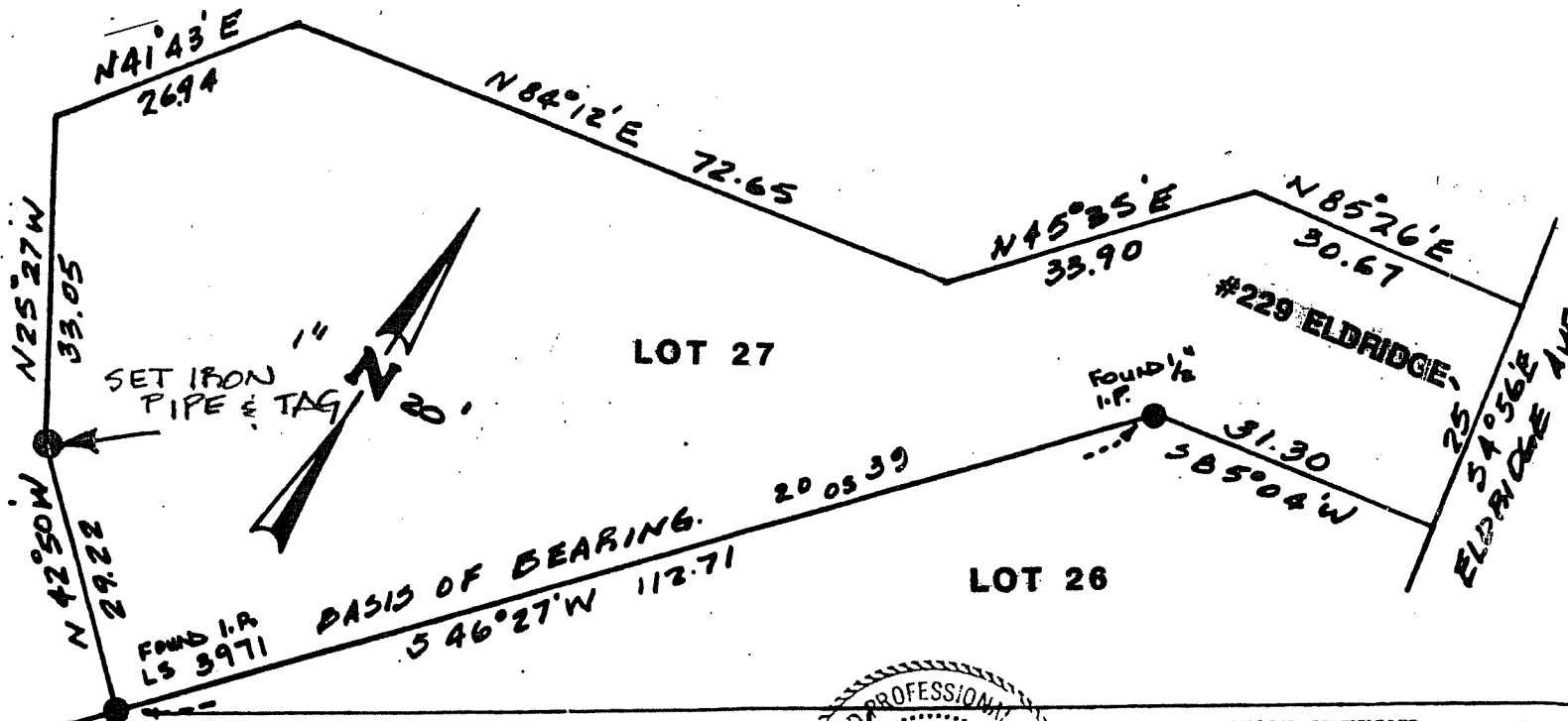
PHYSICAL DESCRIPTION OF MONUMENTS RESULT OR PERPETUATED

Set iron pipe and tag.



CALIFORNIA COORDINATE SYSTEM ORDER: FIRST ☐ SECOND ☐ THIRD ☐
 STATIONS USED: NGS (USC & GS) ☐ STATE ☐ COUNTY ☐ OTHER ☐ STATION STATION
 ZONE ELEVATION NORTHINGS (Y) EASTINGS (X)

SKETCH: (Include reference ties or witness points, remarks and topo of area)

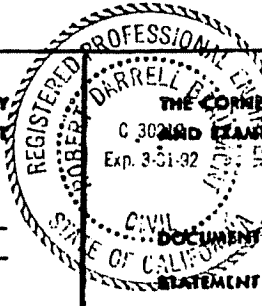


SURVEYOR'S CERTIFICATE

CORNER RECORD WAS PREPARED BY ME OR UNDER MY
 DIRECTION IN CONFORMANCE WITH THE LAND SURVEYORS ACT

SIGNED: W. Edward

C.E. No. 15945



COUNTY SURVEYOR'S CERTIFICATE

THE CORNER RECORD WAS RECEIVED 7/25 1988
 AND EXAMINED AND FILED 7/24 1988

BY: RDE

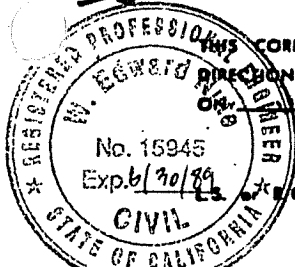
TITLE: DCS

DOCUMENT No.

STATEMENT ON BACK OF SHEET

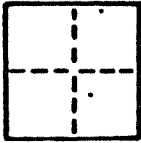
YES ☐

NO ☒



CORNER RECORD

COUNTY OF Marin T. 7 R. 1 MERIDIAN CALIFORNIA
 CORNER TYPE: GOVT. CORNER ☐ MEANDER ☐ RANCHO ☐ CONTROL ☐ OTHER ☒
 CORNER IDENTIFICATION — DATE OF VISIT June 1988



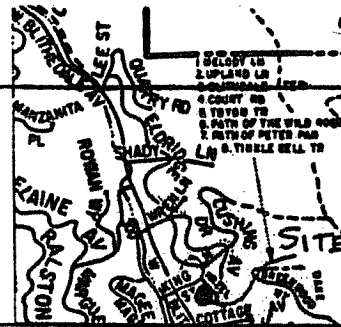
CORNER — LEFT AS FOUND ☐ FOUND AND TAGGED ☐ REESTABLISHED OBLITERATED CORNER ☐ REBUILT ☒

PHYSICAL DESCRIPTION OF CORNER FOUND; EVIDENCE AND METHOD USED TO IDENTIFY OR REESTABLISH

Basis of bearing is S 46° 27' W between found survey points as shown.
 Being a portion of Lots 26 & 27 as shown on Map of "S.B. Cushing's
 Subdivision of Blithedale Map No. 1", 1 R.M. 128, Mill Valley, Marin
 County, California.

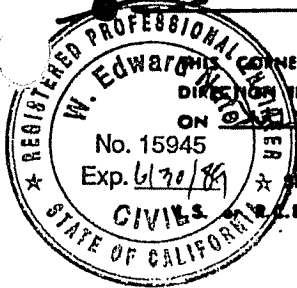
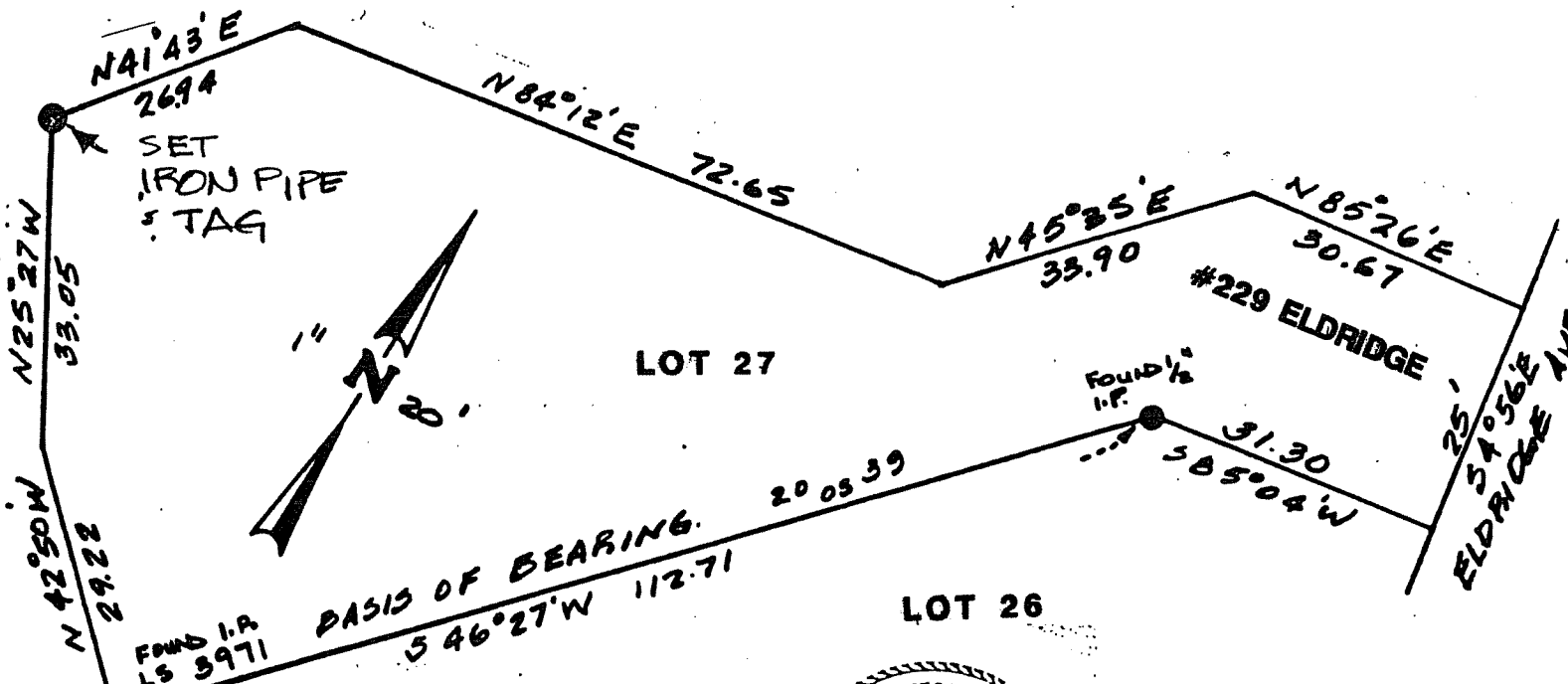
PHYSICAL DESCRIPTION OF MONUMENTS REBUILT OR PERPETUATED

Set iron pipe and tag.



CALIFORNIA COORDINATE SYSTEM ORDER: FIRST ☐ SECOND ☐ THIRD ☐
 STATIONS USED: NGS (USC & GS) ☐ STATE ☐ COUNTY ☐ OTHER ☐ STATION ☐
 ZONE ☐ ELEVATION ☐ NORTHINGS (Y) ☐ EASTINGS (X) ☐

SKETCH: (Include reference tie or witness points, remarks and topo of area)



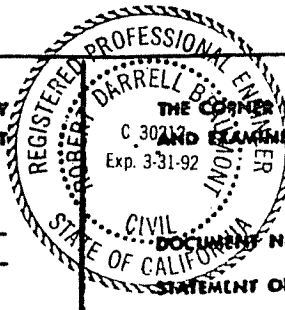
SURVEYOR'S CERTIFICATE

CORNER RECORD WAS PREPARED BY ME OR UNDER MY
 DIRECTION IN CONFORMANCE WITH THE LAND SURVEYORS ACT

ON June 25 1988

SIGNED: W. Edwards

C.E. No. 15945



COUNTY SURVEYOR'S CERTIFICATE

THE CORNER RECORD WAS RECEIVED 7/25 1988
 AND EXAMINED AND FILED 7/26 1988

BY: RDE
 TITLE: DEPUTY

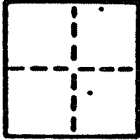
DOCUMENT No. 15945

STATEMENT ON BACK OF SHEET

YES ☐ NO ☒

CORNER RECORD

COUNTY OF Marin T. 1 R. 12 MERIDIAN CALIFORNIA
 CORNER TYPE: GOVT. CORNER ☐ MEANDER ☐ RANCHO ☐ CONTROL ☐ OTHER ☒
 CORNER IDENTIFICATION - DATE OF VISIT June 19 88



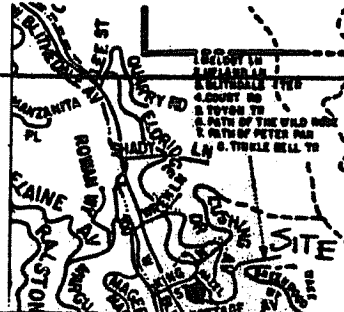
CORNER - LEFT AS FOUND ☐ FOUND AND TAGGED ☐ REESTABLISHED OBLITERATED CORNER ☐ RESULT ☒

PHYSICAL DESCRIPTION OF CORNER FOUND, EVIDENCE AND METHOD USED TO IDENTIFY OR REESTABLISH

Basis of bearing is S 46° 27' W between found survey points as shown.
 Being a portion of Lots 26 & 27 as shown on Map of "S.B. Cushing's
 Subdivision of Blithedale Map No. 1", 1 R.M. 128, Mill Valley, Marin
 County, California.

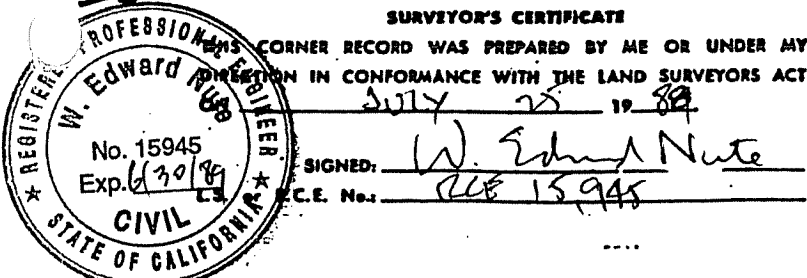
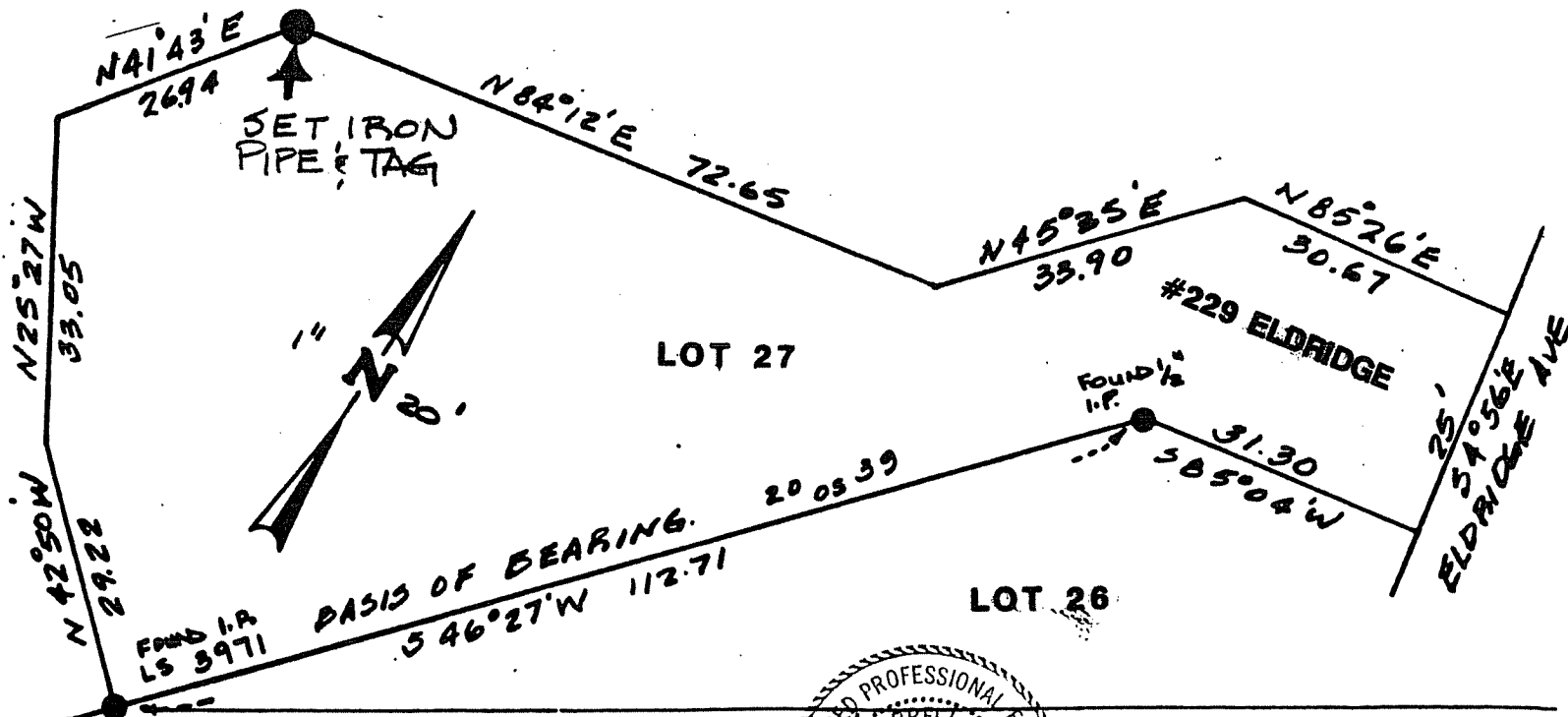
PHYSICAL DESCRIPTION OF MONUMENTS, RESULT OR PERPETUATED

Set iron pipe and tag.



CALIFORNIA COORDINATE SYSTEM ORDER: FIRST ☐ SECOND ☐ THIRD ☐
 STATIONS USED: NGS (USC & GS) ☐ STATE ☐ COUNTY ☐ OTHER ☐ STATION STATION
 ZONE ELEVATION NORTHINGS (Y) EASTINGS (X)

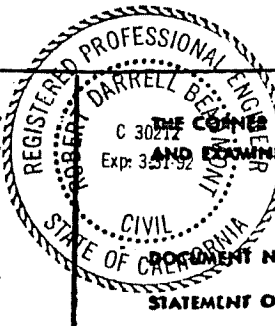
SKETCH: (Include reference tie or witness points, remarks and topo of area)



SURVEYOR'S CERTIFICATE

THIS CORNER RECORD WAS PREPARED BY ME OR UNDER MY
 DIRECTION IN CONFORMANCE WITH THE LAND SURVEYORS ACT

SIGNED: W. Edward Nute
 C.E. No. 15945



COUNTY SURVEYOR'S CERTIFICATE

THE CORNER RECORD WAS RECEIVED 7/25
 AND EXAMINED AND FILED 7/26 1988

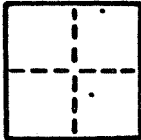
BY: [Signature]
 TITLE: [Signature]

STATEMENT ON BACK OF SHEET

YES ☐ NO ☐

CORNER RECORD

COUNTY OF Marin T. 1 R. 12 MERIDIAN CALIFORNIA
 CORNER TYPE: GOVT. CORNER ☐ MEANDER ☐ RANCHO ☐ CONTROL ☐ OTHER ☒
 CORNER IDENTIFICATION — DATE OF VISIT June 19 1988



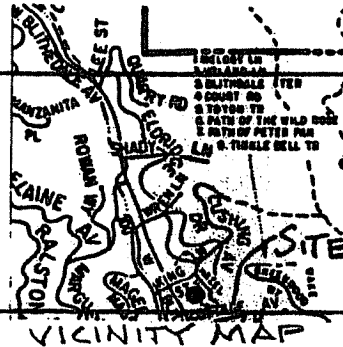
CORNER — LEFT AS FOUND ☐ FOUND AND TAGGED ☐ REESTABLISHED OBLITERATED CORNER ☐ RESULT ☒

PHYSICAL DESCRIPTION OF CORNER FOUND; EVIDENCE AND METHOD USED TO IDENTIFY OR REESTABLISH

Basis of bearing is S 46° 27' W between found survey points as shown.
 Being a portion of Lots 26 & 27 as shown on Map of "S.B. Cushing's
 Subdivision of Blithedale Map No. 1", 1 R.M. 128, Mill Valley, Marin
 County, California.

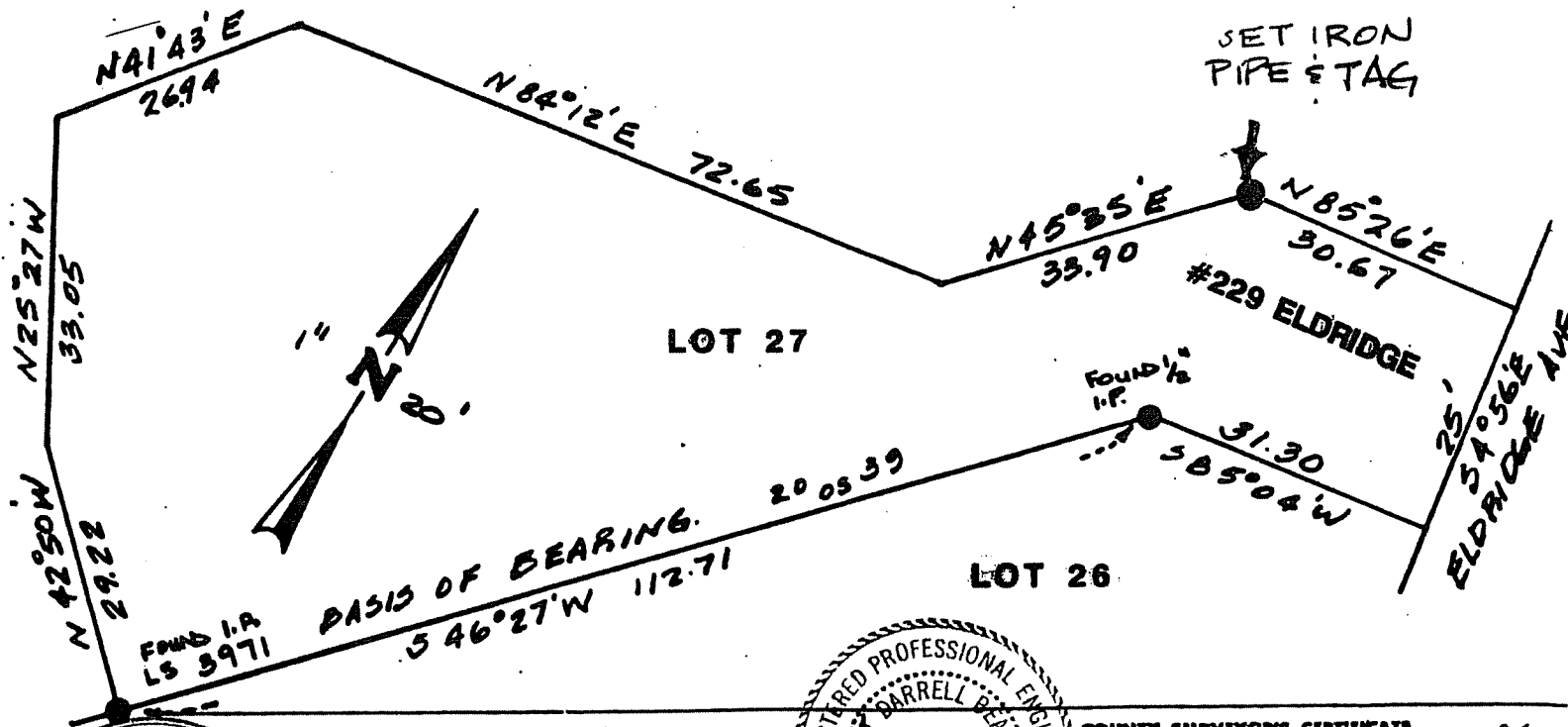
PHYSICAL DESCRIPTION OF MONUMENTS REBUILT OR PERPETUATED

Set iron pipe and tag.



CALIFORNIA COORDINATE SYSTEM ORDER: FIRST ☐ SECOND ☐ THIRD ☐
 STATIONS USED: NGS (USC & GS) ☐ STATE ☐ COUNTY ☐ OTHER ☐ STATION
 ZONE ELEVATION NORTHINGS (Y) EASTINGS (X)

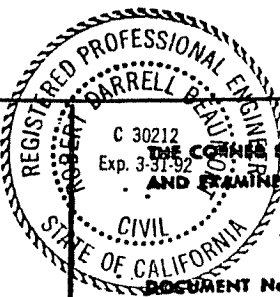
SKETCH: (Include reference line or witness points, remarks and topo of area)



SURVEYOR'S CERTIFICATE

THIS CORNER RECORD WAS PREPARED BY ME OR UNDER MY
 DIRECTION IN CONFORMANCE WITH THE LAND SURVEYORS ACT

SIGNED: W. Edward Nute
 C.E. No. 15945

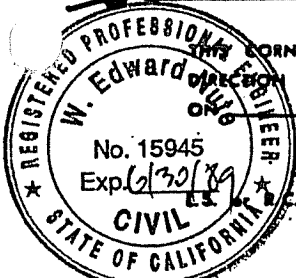


COUNTY SURVEYOR'S CERTIFICATE

THE CORNER RECORD WAS RECEIVED 7/25/88
 AND EXAMINED AND FILED 7/26/88
 BY: [Signature]
 TITLE: [Signature]

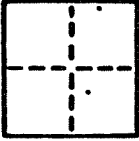
STATEMENT ON BACK OF SHEET

YES ☐ NO ☒



CORNER RECORD

COUNTY OF Marin T. 1 R. 12 MERIDIAN CALIFORNIA
 CORNER TYPE: GOVT. CORNER ☐ MEANDER ☐ RANCHO ☐ CONTROL ☐ OTHER ☒
 CORNER IDENTIFICATION — DATE OF VISIT June 19 88



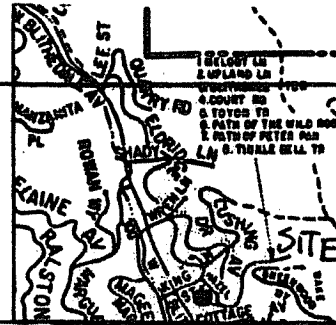
CORNER — LEFT AS FOUND ☐ FOUND AND TAGGED ☐ REESTABLISHED OBLITERATED CORNER ☐ RESULT ☒

PHYSICAL DESCRIPTION OF CORNER FOUND, EVIDENCE AND METHOD USED TO IDENTIFY OR REESTABLISH

Basis of bearing is S 46° 27' W between found survey points as shown.
 Being a portion of Lots 26 & 27 as shown on Map of "S.B. Cushing's
 Subdivision of Blithedale Map No. 1", 1 R.M. 128, Mill Valley, Marin
 County, California.

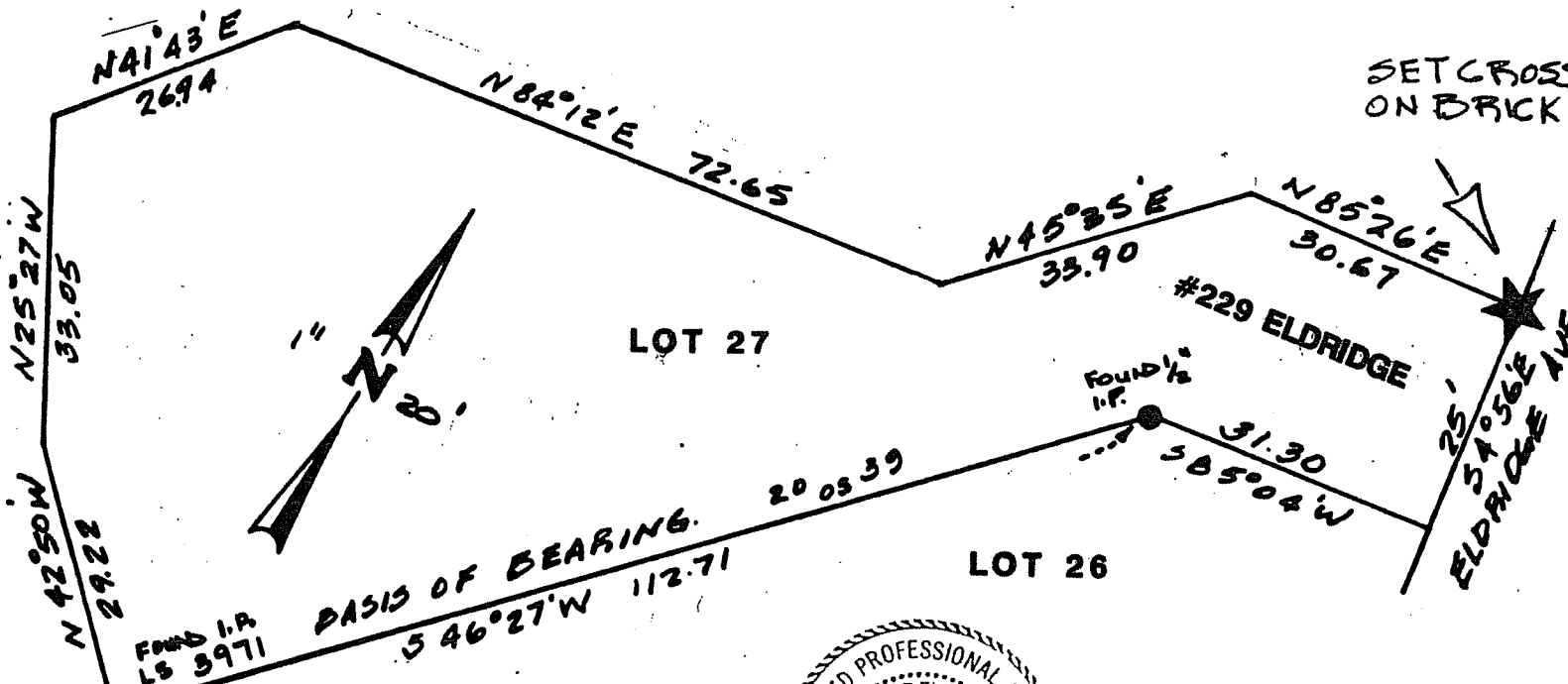
PHYSICAL DESCRIPTION OF MONUMENTS REBUILT OR PERPETUATED

Set cross on brick.



CALIFORNIA COORDINATE SYSTEM ORDER: FIRST ☐ SECOND ☐ THIRD ☐
 STATIONS USED: NGS (USC & GS) ☐ STATE ☐ COUNTY ☐ OTHER ☐ STATION STATION
 ZONE ELEVATION NORTHINGS (Y) EASTINGS (X)

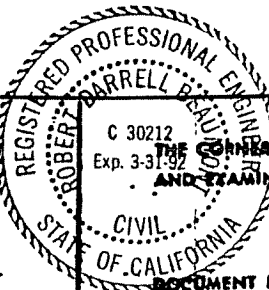
SKETCH: (Include reference tie or witness points, remarks and topo of area)



SURVEYOR'S CERTIFICATE

THIS CORNER RECORD WAS PREPARED BY ME OR UNDER MY
 SUPERVISION IN CONFORMANCE WITH THE LAND SURVEYORS ACT

SIGNED: W. Edward Nute
 C.E. No. 15,945



COUNTY SURVEYOR'S CERTIFICATE

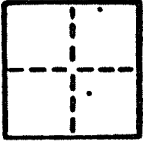
THE CORNER RECORD WAS RECEIVED 7/25 1988
 AND EXAMINED AND FILED 7/26 1988
 BY: [Signature]
 TITLE: D.S.

STATEMENT ON BACK OF SHEET

YES ☐

CORNER RECORD

COUNTY OF Marin T. 1 R. 12 MERIDIAN CALIFORNIA
 CORNER TYPE: GOVT. CORNER ☐ MEANDER ☐ RANCHO ☐ CONTROL ☐ OTHER ☒
 CORNER IDENTIFICATION — DATE OF VISIT June 1988



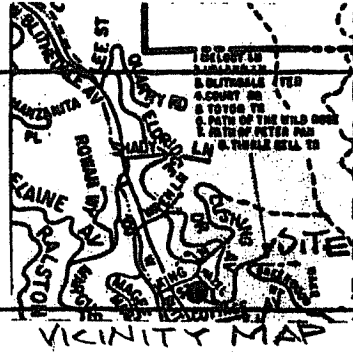
CORNER — LEFT AS FOUND ☒ FOUND AND TAGGED ☐ REESTABLISHED OBLITERATED CORNER ☐ REBUILT ☐

PHYSICAL DESCRIPTION OF CORNER FOUND, EVIDENCE AND METHOD USED TO IDENTIFY OR REESTABLISH

Basis of bearing is S 46° 27' W between found survey points as shown.
 Being a portion of Lots 26 & 27 as shown on Map of "S.B. Cushing's
 Subdivision of Blithedale Map No. 1", 1 R.M. 128, Mill Valley, Marin
 County, California.

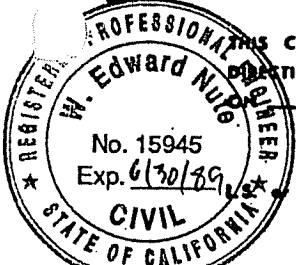
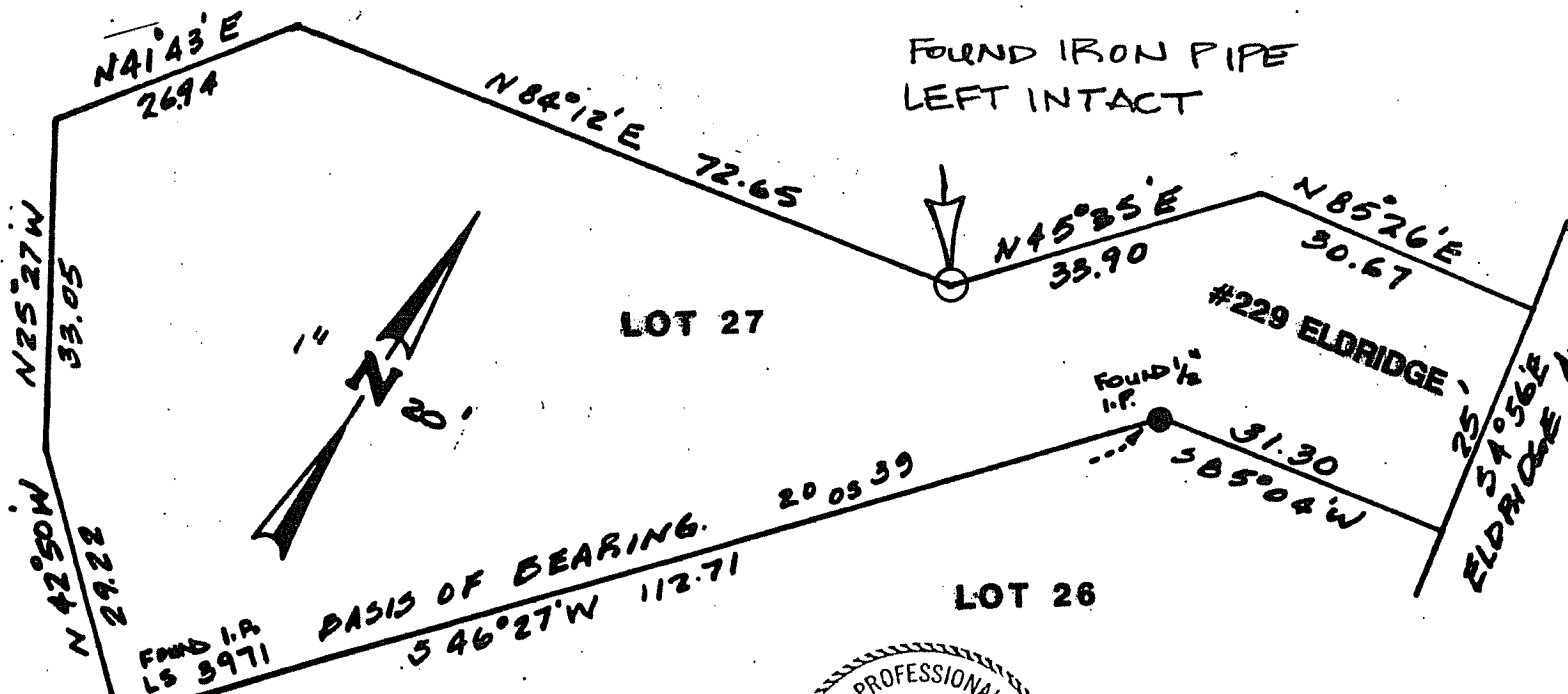
PHYSICAL DESCRIPTION OF MONUMENTS, REBUILT OR PERPETUATED

Found unplugged iron pipe.
 Left intact.



CALIFORNIA COORDINATE SYSTEM ORDER: FIRST ☐ SECOND ☐ THIRD ☐
 STATIONS USED: NGS (USC & GS) ☐ STATE ☐ COUNTY ☐ OTHER ☐ STATION ☐
 ZONE ☐ ELEVATION ☐ NORTHINGS (Y) ☐ EASTINGS (X) ☐

SKETCH: (Include reference tie or witness points, remarks and topo of area)

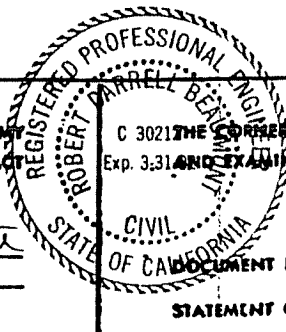


SURVEYOR'S CERTIFICATE

THIS CORNER RECORD WAS PREPARED BY ME OR UNDER MY
 DIRECTION IN CONFORMANCE WITH THE LAND SURVEYORS ACT

SIGNED: W. Edward Nuber

R.C.E. No. 15945



COUNTY SURVEYOR'S CERTIFICATE

THE CORNER RECORD WAS RECEIVED 7/25/88
 Exp. 3/31/88 AND EXAMINED AND FILED 7/26/88
 BY: RDB
 TITLE: DCS

STATEMENT ON BACK OF SHEET

YES ☐ NO ☒