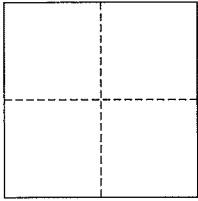


# CORNER RECORD

City of Mill Valley

Document Number AP# 029-011-05  
County of Marin, California

Brief Legal Description 3435 OR 562



## CORNER TYPE

Government Corner ☐ Control ☐  
Meander ☐ Property ☒  
Rancho ☐ Other ☐  
Date of Survey November 27, 2012

## COORDINATES (Optional)

N. \_\_\_\_\_  
E. \_\_\_\_\_  
Zone \_\_\_\_\_ NAD27 ☐ NAD83 ☐  
NAD83 Epoch \_\_\_\_\_  
Elev. \_\_\_\_\_  
Vert. Datum: NGVD29 ☐ NAVD88 ☐  
Meas. Units: Metric ☐ Imperial ☐

**Corner-** Left as found ☐ Found and tagged ☐ Established ☒ Reestablished ☐ Rebuilt ☐

Identification and type of corner found: Evidence used to identify or procedure used to establish or reestablish the corner:  
Found 0.5' Open Iron Pipes along Eldridge Avenue & Iron Pipe & Plug PLS 3971 Per 31 RS 85. Also found a  
Rebar with no Cap along Southerly property line.

A description of the physical condition of the monument as found and as set or reset: Set Iron Pipe & Plug, RCE  
30465, along Southerly line; all points set per Corner Record, AP# 029-011-05, dated 14 Apr 2011.

## SURVEYOR'S STATEMENT

This corner Record was prepared by me or under my direction in conformance with  
the Land Surveyor's Act on November 27, 2012

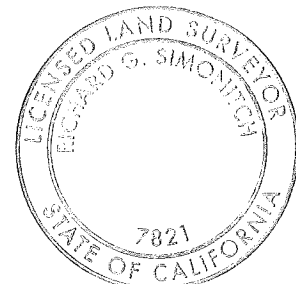
Signed [Signature] P.L.S. or R.C.E. No. 30465



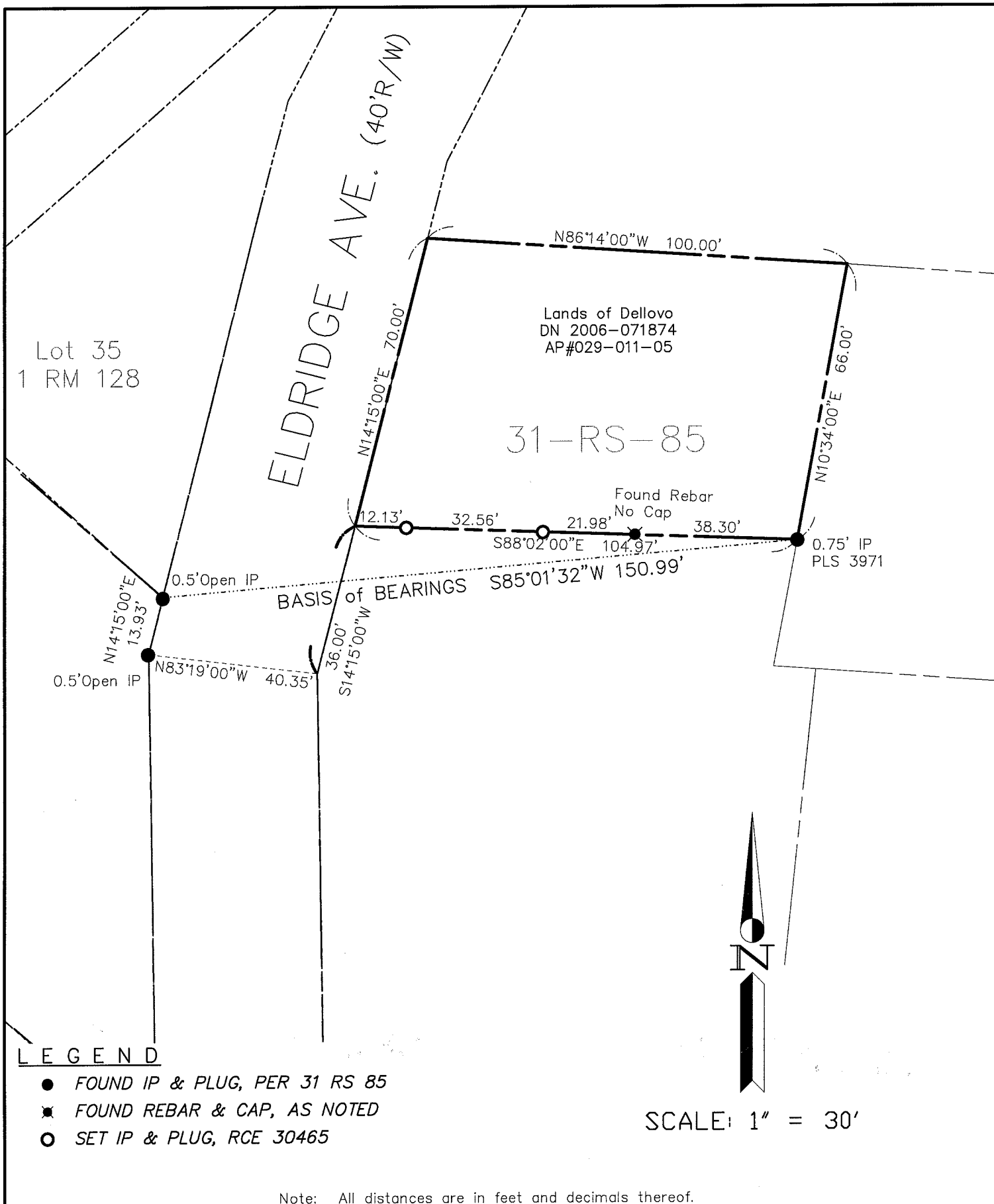
## COUNTY SURVEYOR'S STATEMENT

This Corner Record was received NOVEMBER 29, 2012  
and examined and filed JANUARY 9, 2013

Signed [Signature] P.L.S. or R.C.E. No. 7128 7821  
Title DEPUTY COUNTY SURVEYOR



**County Surveyor's Comment** \_\_\_\_\_



SHEET	1	OF	1
SCALE:	1" = 30'	DESIGN:	PR
DATE:	Nov 2012	DRAWN:	PR
FILE:	2010-010	CHECKED:	J.L.H

J.L. ENGINEERING  
CIVIL ENGINEERS-LAND SURVEYORS  
1539 4th ST., SAN RAFAEL, CA. 94901 (415) 457-6647

Corner Record

Lands of Dellovo - 260 Eldridge Ave.  
APN 029-011-05, Mill Valley, Marin County, CA