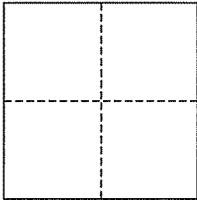


CORNER RECORD

City of Mill Valley

Document Number AP# 029-011-05
County of Marin, California

Brief Legal Description 3435 OR 562



CORNER TYPE

Government Corner ☐ Control ☐
Meander ☐ Property ☒
Rancho ☐ Other ☐
Date of Survey April 13, 2011

COORDINATES (Optional)

N. _____
E. _____
Zone _____ NAD27 ☐ NAD83 ☐
NAD83 Epoch _____
Elev. _____
Vert. Datum: NGVD29 ☐ NAVD88 ☐
Meas. Units: Metric ☐ Imperial ☐

Corner- Left as found ☐ Found and tagged ☐ Established ☐ Reestablished ☒ Rebuilt ☐

Identification and type of corner found: Evidence used to identify or procedure used to establish or reestablish the corner:
Found 0.5' Open Iron Pipes along Eldridge Avenue & Iron Pipe & Plug PLS 3971 Per 31 RS 85. Also found a
Rebar with no Cap along Southerly property line.

A description of the physical condition of the monument as found and as set or reset: Set Nail & Tag on NE Corner.
Also set multiple Hub & Tack along Northerly and Easterly property lines & a Nail and Tag on Northerly line
extension in a concrete wall along Eldridge Avenue as shown on Map.

SURVEYOR'S STATEMENT

This corner Record was prepared by me or under my direction in conformance with

the Land Surveyor's Act on

April 13 2011

Signed

P.L.S. or R.C.E. No. 30465

COUNTY SURVEYOR'S STATEMENT

This Corner Record was received

APRIL 14, 2011

and examined and filed

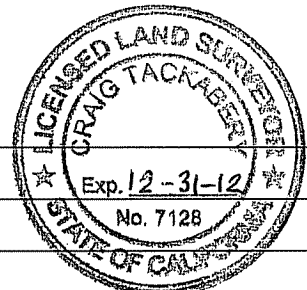
MAY 9, 2011

Signed

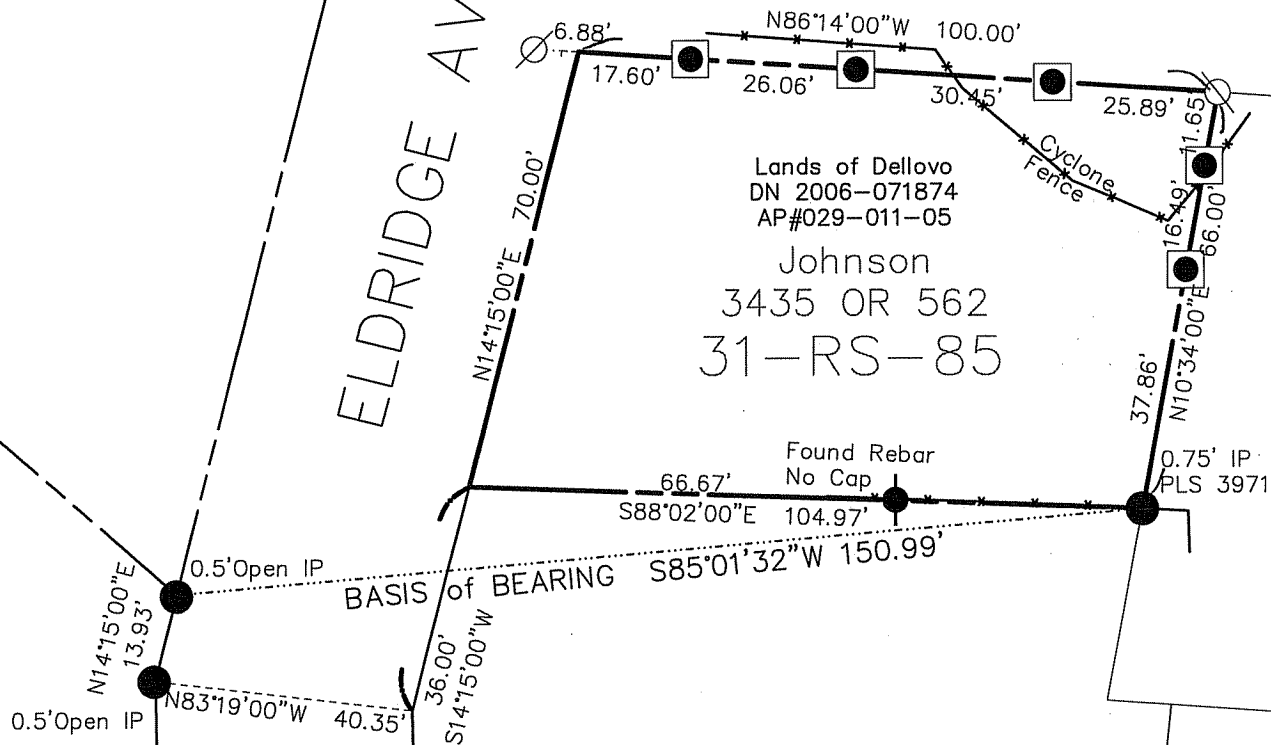
P.L.S. or R.C.E. No. 7128

Title COUNTY SURVEYOR

County Surveyor's Comment _____



ELDRIDGE AVE. (40'R/W)



LEGEND

- FOUND IP & PLUG, PER 31 RS 85
- ✕ FOUND REBAR & CAP, AS NOTED
- ∅ SET NAIL & TAG, RCE 30465
- SET 2x2 HUB & TACK

Note: All distances are in feet and decimals thereof.

SHEET 1 OF 1
 SCALE: 1" = 30' DESIGN: XXX
 DATE: April 2011 DRAWN: XXX
 FILE: 2010-010 CHECKED: J.L.H

J.L. ENGINEERING
 CIVIL ENGINEERS-LAND SURVEYORS
 1539 4th ST., SAN RAFAEL, CA. 94901 (415) 457-6647

Corner Record

Lands of Dellovo - 260 Eldridge Ave.
 APN 029-011-05, Mill Valley, Marin County, CA