

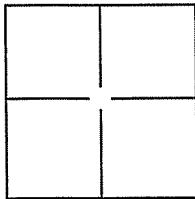
CORNER RECORD

Document Number A.P.N. 028-202-13

City of Mill Valley

County of Marin, California

Brief Legal Description Lands of St. Laurent, 88 Montford Avenue, 2004 R.S. 286.



CORNER TYPE

Government Corner Control
Meander Property
Rancho Other

Date of Survey 26 September 2008

COORDINATES(Optional)

N. _____
E. _____
Zone _____ NAD27 NAD83
NAD83 Epoch _____
Elev. _____
Vert. Datum: NGVD29 NADV88
Meas. Units: Metric Imperial

Corner - Left as found Found and tagged Established Reestablished Rebuilt

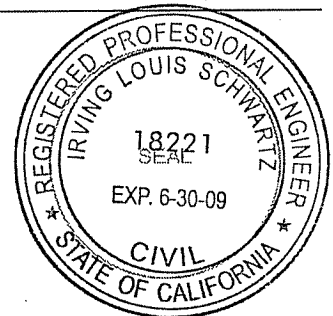
Identification and type of corner found: Evidence used to identify or procedure used to establish or reestablish the corner:
Found 5/8" Rebar and Yellow Cap L.S. 6784 (2).

A description of the physical condition of the monument as found and as set or reset:
Set NW and SW corners (2 corners), See Exhibit "A".

SURVEYOR'S STATEMENT

This Corner Record was prepared by me or under my direction in conformance with the Land Surveyor's Act on NOVEMBER 17, 2008.

Signed [Signature] P.L.S. or R.C.E. No.: 18221



COUNTY SURVEYOR'S STATEMENT

This Corner Record was received NOVEMBER 19, 2008 and examined and filed DECEMBER 1, 2008.

Signed [Signature] P.L.S. or R.C.E. No.: 7128

Title COUNTY SURVEYOR

County Surveyor's Comment _____





ILS ASSOCIATES, INC.®
 Civil Engineering & Land Surveying
 79 Galli Drive, Suite A
 Novato, Ca 94949-5717
 (415)883-9200 FAX (415)883-2763

DRAWN: SJM	JOB NO: 8310
DATE: 11\04\08	SHEET NO. 1 OF 1

EXHIBIT A

LEGEND

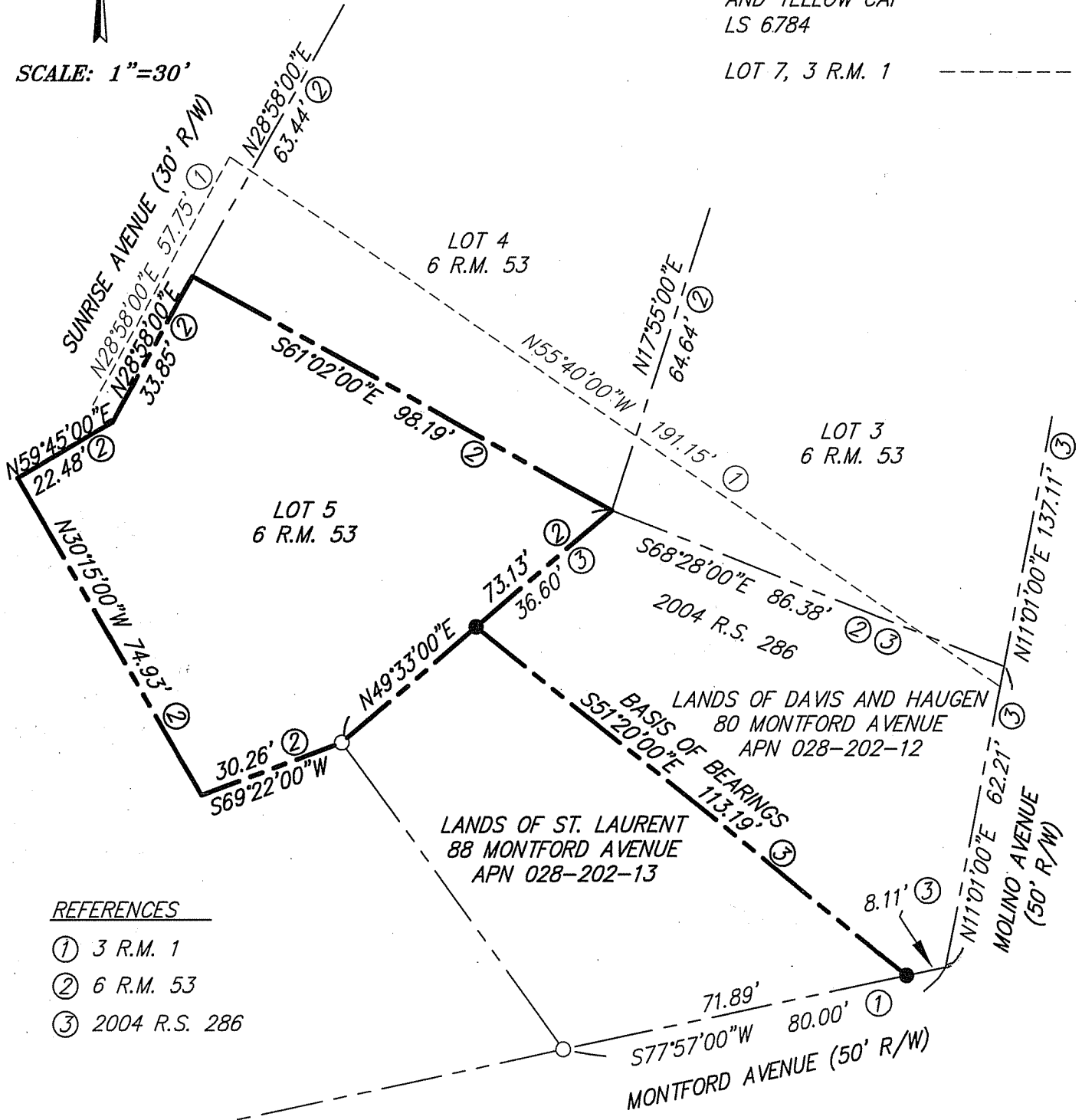
SET 3/4" IRON PIPE AND
YELLOW CAP "R.C.E. 18221" ○

FOUND 5/8" REBAR
AND YELLOW CAP
LS 6784 ●

LOT 7, 3 R.M. 1 -----



SCALE: 1"=30'



REFERENCES

- ① 3 R.M. 1
- ② 6 R.M. 53
- ③ 2004 R.S. 286