

**CORNER RECORD**

Document Number APN 028-164-12  
County of Marin, California

City of Mill Valley  
Brief Legal Description: Parcel one, Document Number 2004-0005018, Marin County Records

**CORNER TYPE**

**COORDINATES**

Government Corner  Control   
Meander  Property   
Rancho  Other   
Date of Survey : March 12, 2009

*(Optional)*

N. \_\_\_\_\_  
E. \_\_\_\_\_  
Zone \_\_\_\_\_ Datum \_\_\_\_\_  
Elev. \_\_\_\_\_

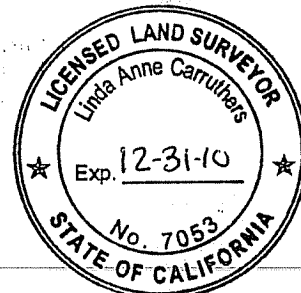
Corner --Left as found  Found and tagged  Established  Reestablished  Rebuilt

Identification and type of corner found: Evidence used to identify or procedure used to establish or reestablish the corner.

This survey is based upon found monuments shown on that certain map entitled: Record of Survey, "Lands of Roehl" recorded in Book 2001 of Maps Page 115, Marin County Records.

A Description of the physical condition of the monument as found and as set or reset.

See Sheet two.



**SURVEYOR'S STATEMENT**

This Corner Record was prepared by me or under my direction in conformance with the Professional Land Surveyor's Act on May 5, 2009

Signed Linda Anne Carruthers P.L.S. 7053

**COUNTY SURVEYOR'S STATEMENT**

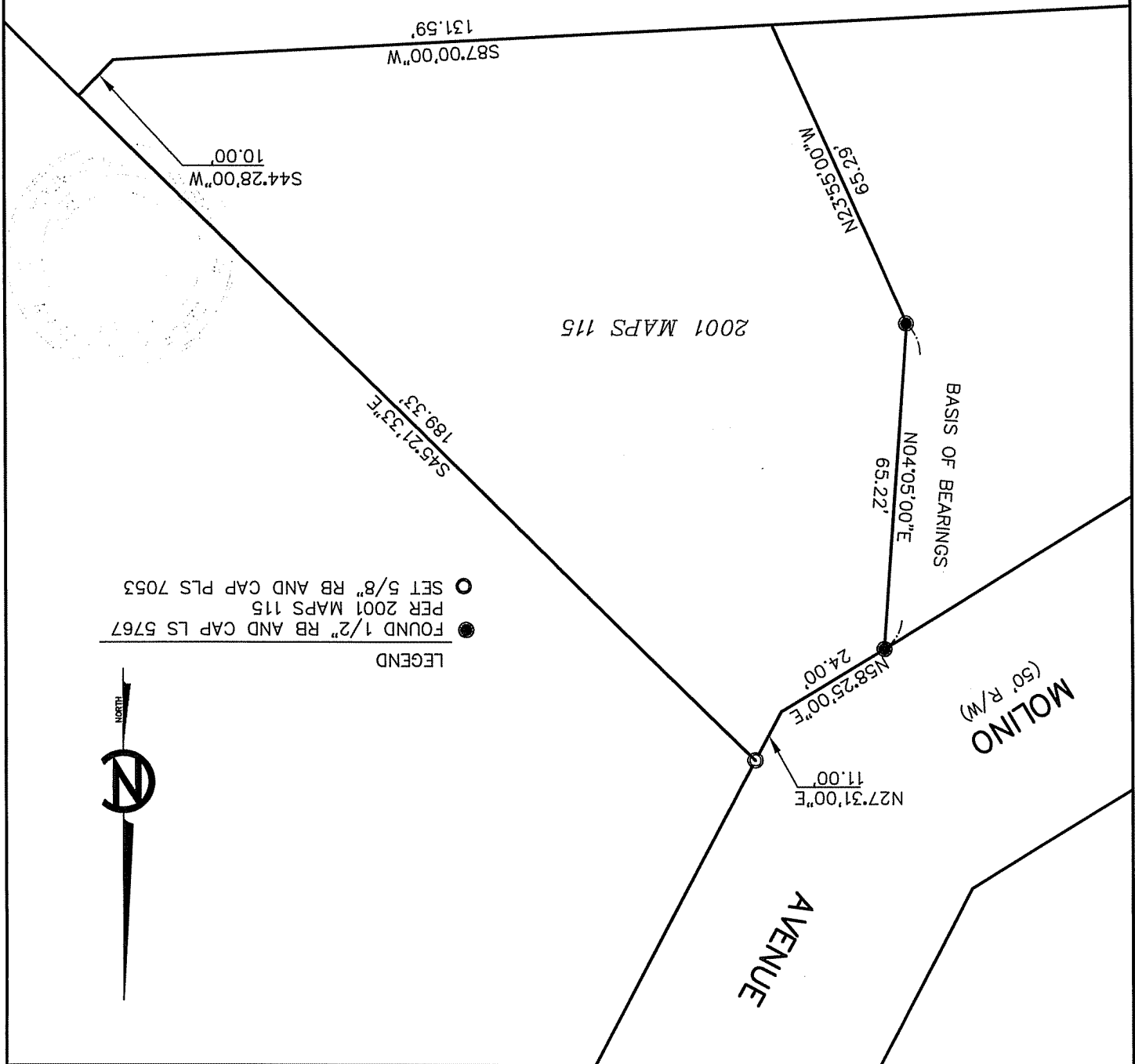
This Corner Record was received June 2, 2009 and examined and filed JULY 1, 2009.

Signed [Signature] Title COUNTY SURVEYOR



County Surveyor's Comments \_\_\_\_\_  
\_\_\_\_\_  
\_\_\_\_\_

CORNER RECORD  
 38 HELENS LANE, MILL VALLEY  
 APN 028-164-12  
**LINDA A. CARRUTHERS & ASSOCIATES**  
 2015 BRIDGEWAY, STE. 301D  
 SAUSALITO, CA 94965  
 SCALE: 1"=30'  
 DATE: MAY 2009  
 JOB NO. 09-692CR



- LEGEND
- FOUND 1/2" RB AND CAP LS 5767
  - SET 5/8" RB AND CAP PLS 7053
  - PER 2001 MAPS 115

