

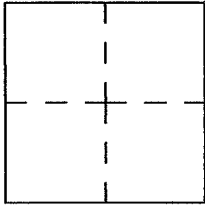
CORNER RECORD

Agency Index 21-148

Document number A.P.N. 028-153-10

City of MILL VALLEY County of MARIN, California

Brief Legal Description "LANDS OF POTTER" AS SHOWN UPON RECORD OF SURVEY
36 O.S. 49, MARIN COUNTY RECORDS



CORNER TYPE

Government Corner Control
Meander Property
Rancho Other
Date of Survey FEBRUARY, 2021

COORDINATES(Optional)

N. _____ E. _____
Elevation _____
Units Metric U.S. Feet
Horizontal Datum _____
Zone _____ Epoch Date _____
 Complies with Public Resources Code §§8801-8819
 Complies with Public Resources Code §§8890-8902

PLS Act Ref.: 8765(d) 8771 8772 Other:

Corner/Monument Left as found Established Rebuilt Pre-Construction
 Found & Tagged Reestablished Referenced Post-Construction

Narrative of corner identified and monument as found, set, reset, replaced, or removed:

See sheet #2 for description(s):

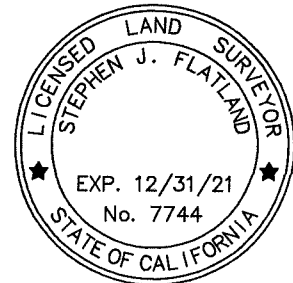
UTILIZED REBAR MONUMENTS AS SHOWN UPON 36 O.S. 49 AS A BASIS OF BEARINGS TO MONUMENT SOUTHEASTERLY LINE OF "LANDS OF POTTER" SHOWN UPON SAID MAP.

REBAR MONUMENTS, L.S. 4402, MEASURED PER 36 O.S. 49 AND WERE DEEMED UNDISTURBED, AND ARE SHOWN ON THE ATTACHED DIAGRAM.

SURVEYOR'S STATEMENT

This Corner Record was prepared by me or under my direction in conformance with the Professional Land Surveyors' Act on July 14, 2021.

Signed _____ P.L.S. or R.C.E. No. 7744



COUNTY SURVEYOR'S STATEMENT

This Corner Record was received 7-20-21

and examined and filed 1-31-22

Signed [Signature] P.L.S. or R.C.E. No. 9292

Title DEPUTY

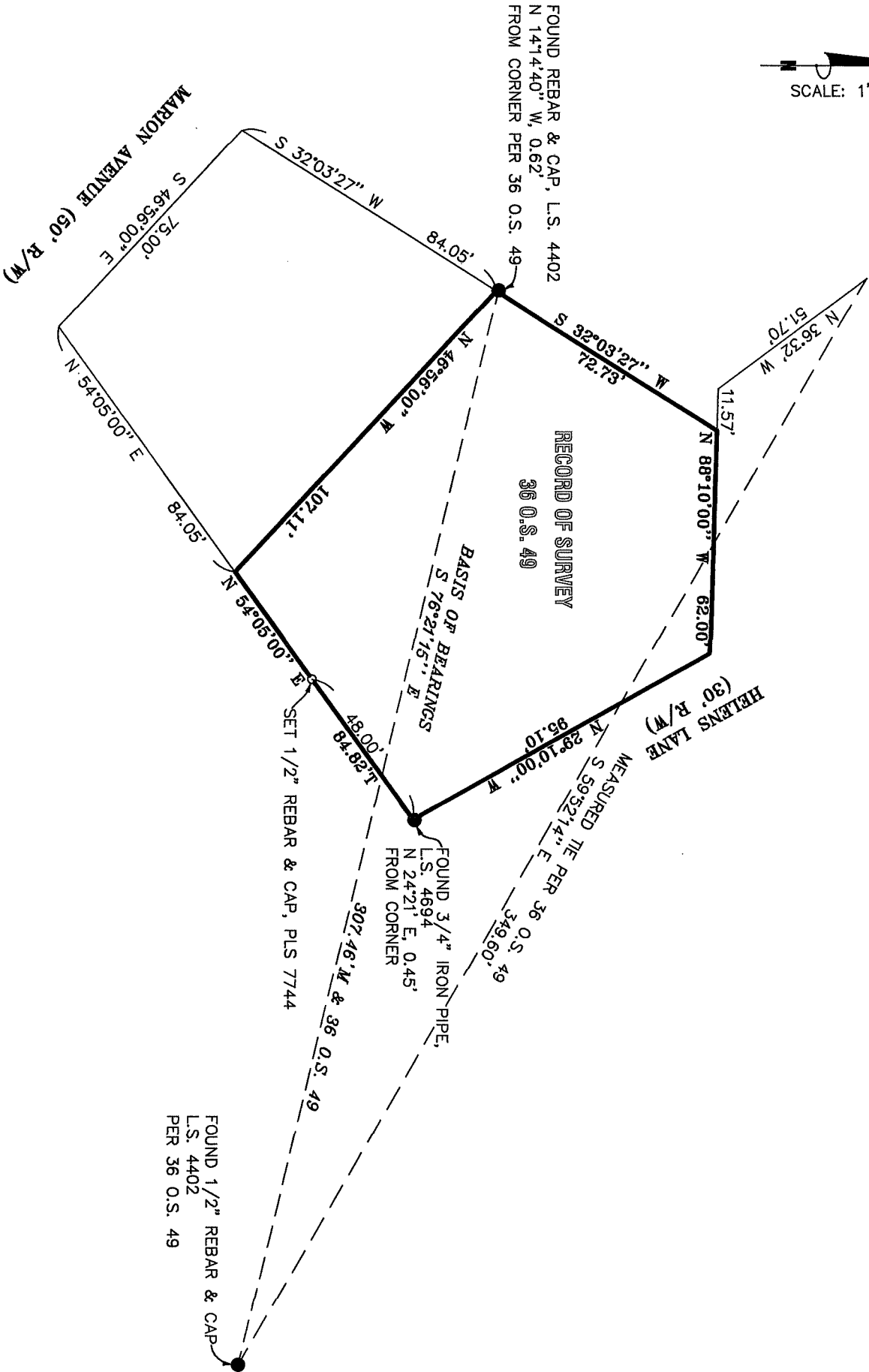
County Surveyor's Comment



RECEIVED

JUL 20 2021

County of Marin
Department of Public Works



- LEGEND**
- FOUND MONUMENT, AS SHOWN
 - SET 1/2" REBAR & CAP, P.L.S. 7744

