

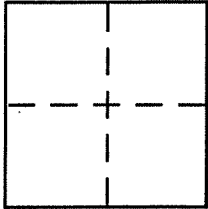
CORNER RECORD

Document Number APN 28-135-04

City of Mill Valley

County of MARIN, California

Brief Legal Description # 28 HAZEL AVENUE / PART LOT 18 - 2 RM 25 / APN 28-135-04



CORNER TYPE

- Government Corner Control
- Meander Property
- Rancho Other
- Date of Survey _____

COORDINATES (Optional)

- N. _____
- E. _____
- Zone _____ NAD27 NAD83
- NAD83 Epoch _____
- Elev. _____
- Vert. Datum: NGVD29 NAVD88
- Meas. Units: Metric Imperial

Corner - Left as found Found and tagged Established Reestablished Rebuilt

Identification and type of corner found: Evidence used to identify or procedure used to establish or reestablish the corner:

See Back

A description of the physical condition of the monument as found and as set or reset:

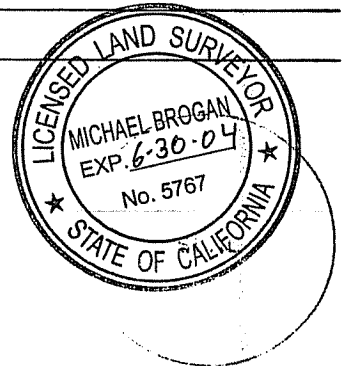
See BACK

SURVEYOR'S STATEMENT

This Corner Record was prepared by me or under my direction in conformance with

the Land Surveyor's Act on July 24, 2003

Signed Michael A. Brogan P.L.S or R.C.E. No. LS 5767



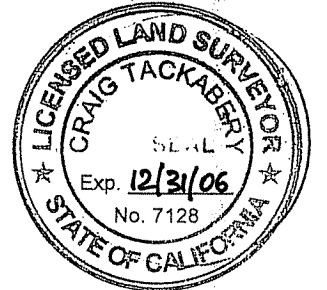
COUNTY SURVEYOR'S STATEMENT

This Corner Record was received JULY 29, 2003

and examined and filed AUG. 8, 2003

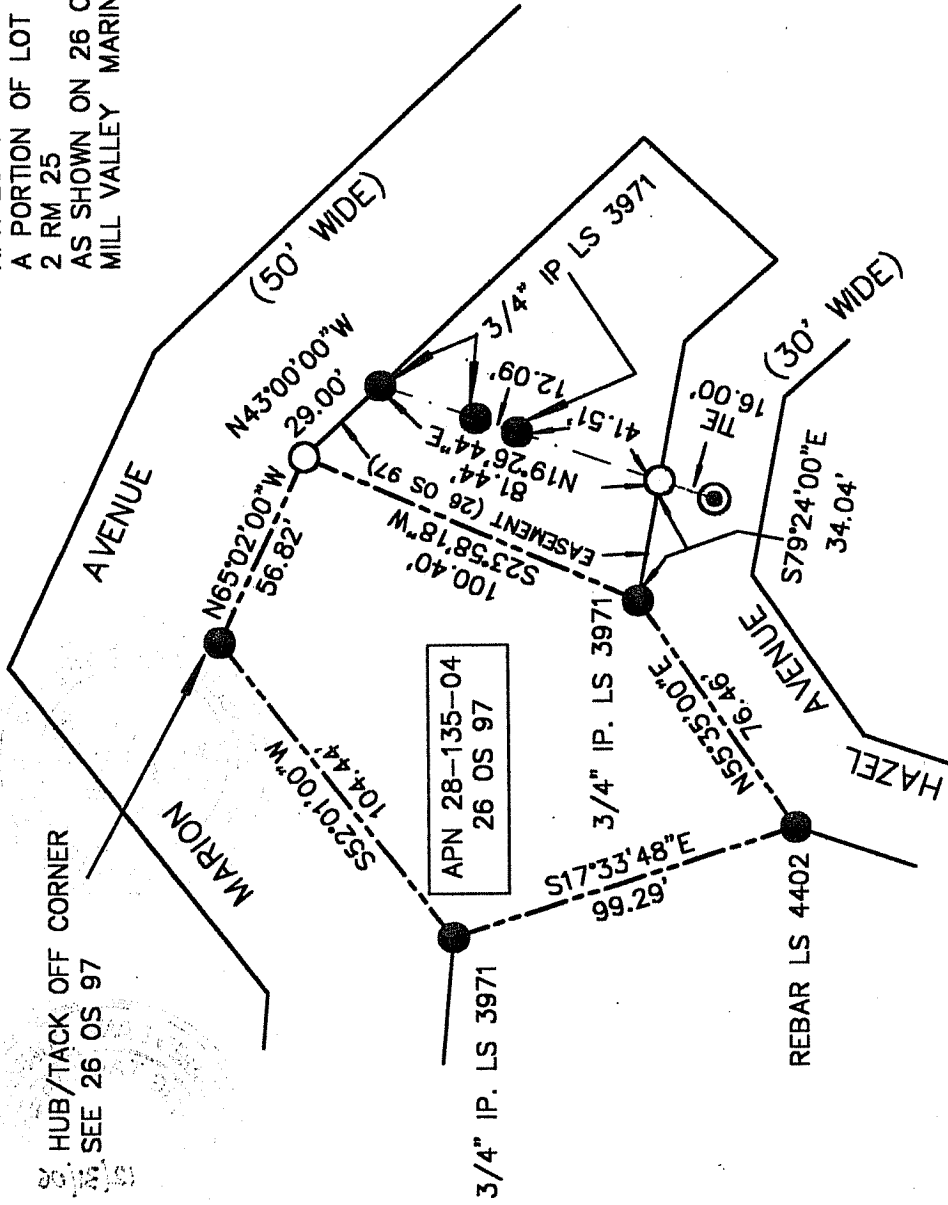
Signed Coy P.L.S or R.C.E. No. 7128

Title COUNTY SURVEYOR



County Surveyor's Comment _____

CORNER RECORD
 APN 28-135-04
 A PORTION OF LOT 18
 2 RM 25
 AS SHOWN ON 26 OS 97
 MILL VALLEY MARIN COUNTY CALIFORNIA



M. BROGAN AND ASSOCIATES, INC.
 100 LABREA WAY
 SAN RAFAEL CA 94903
 472-6964
 JOB NO. 5572 JULY 2003
 NOT TO SCALE

- ⊙ = SET LEAD PLUG/TACK/WASHER ON LINE EXTENDED
- = SET 1/2" REBAR/CAP LS 5767
- = FOUND MONUMENTATION PER 26 OS 97

HUB/TACK OFF CORNER
 SEE 26 OS 97

