

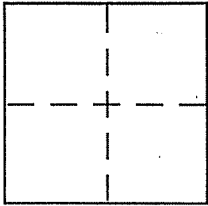
CORNER RECORD

Document Number APN 028-132-08

City of Mill Valley

County of Marin, California

Brief Legal Description Lots 18 and 19 per 2 Maps 129



CORNER TYPE

Government Corner Control
Meander Property
Rancho Other
Date of Survey _____

COORDINATES (Optional)

N. _____
E. _____
Zone _____ NAD27 NAD83
NAD83 Epoch _____
Elev. _____
Vert. Datum: NGVD29 NAVD88
Meas. Units: Metric Imperial

Corner - Left as found Found and tagged Established Reestablished Rebuilt

Identification and type of corner found: Evidence used to identify or procedure used to establish or reestablish the corner:

See page 2 of 2

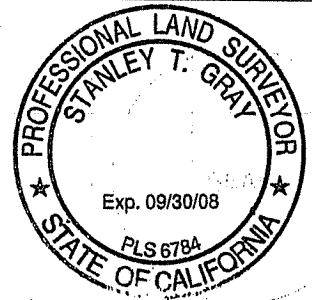
A description of the physical condition of the monument as found and as set or reset:

See page 2 of 2

SURVEYOR'S STATEMENT

This Corner Record was prepared by me or under my direction in conformance with the Land Surveyor's Act on 10/20/07

Signed [Signature] P.L.S or R.C.E. No. 6784



COUNTY SURVEYOR'S STATEMENT

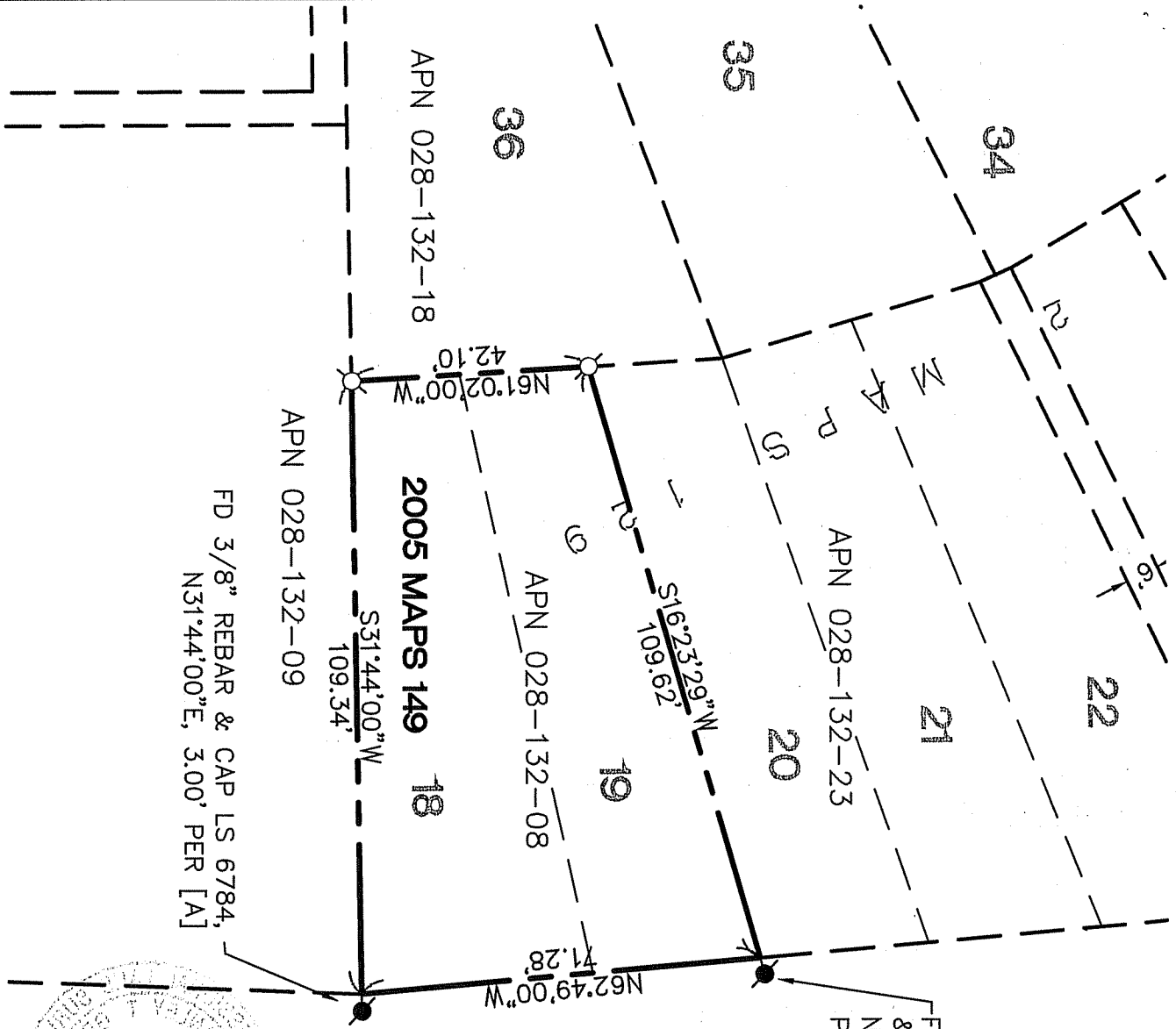
This Corner Record was received: 11-14-07

and examined and filed DECEMBER 10, 2007

Signed [Signature] P.L.S or R.C.E. No. 7128
Title COUNTY SURVEYOR



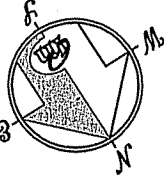
County Surveyor's Comment _____



FD 3/8" REBAR & CAP LS 6784,
N31°44'00"E, 3.00' PER [A]

FD 3/8" REBAR
& CAP LS 6784,
N16°23'29"E, 3.00'
PER [A]

MOLINO AVENUE (50' WIDE)



REFERENCE

[A] RECORD OF SURVEY, LANDS OF MORADIAN FILED FOR RECORD MAY 20, 2005 IN BOOK 2005 OF MAPS, AT PAGE 149, MARIN COUNTY RECORDS.

LEGEND

- FOUND MONUMENT AS NOTED
- SET 5/8" REBAR WITH CAP, PLS 6784

NOTE
RECORD=MEASURED

CORNER RECORD



MERIDIAN SURVEYING, INC.

1812 UNION STREET SAN FRANCISCO, CA 94123 (415) 440-4131
 777 GRAND AVENUE, SUITE 202 SAN RAFAEL, CA 94901 (415) 455-5450
 info@meridiansurveying.com