



JERRICO ASSOCIATES

SUITE 27
77 MARK DRIVE
SAN RAFAEL, CA 94903

7471

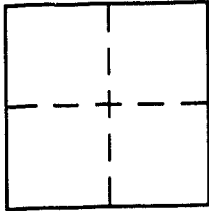
CORNER RECORD

City of Mill Valley

Document Number 28-131-17

County of Marin, California

Brief Legal Description Lot 13, Millside Terrace 2 Maps 129



CORNER TYPE

Government Corner Control
Meander Property
Rancho Other
Date of Survey April 7, 2005

COORDINATES (Optional)

N. _____
E. _____
Zone _____ NAD27 NAD83
NAD83 Epoch _____
Elev. _____
Vert. Datum: NGVD29 NAVD88
Meas. Units: Metric Imperial

Corner - Left as found Found and tagged Established Reestablished Rebuilt

Identification and type of corner found: Evidence used to identify or procedure used to establish or reestablish the corner:
Found rebar set in Jan. 2003 as shown in 2003 Maps 19 and shown on page 2.

A description of the physical condition of the monument as found and as set or reset: _____

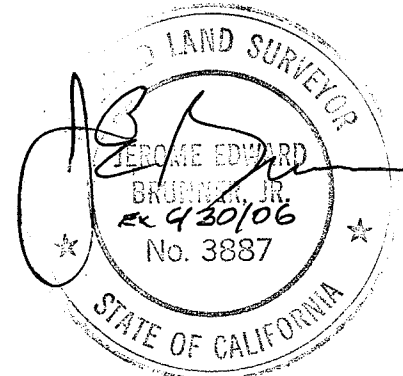
A Set line point with 1/2" rebar.

B Set 5' steel fence post to 6" above ground and wired tag
LS 3887 thereto. Also a line point.

SURVEYOR'S STATEMENT

This Corner Record was prepared by me or under my direction in conformance with the Land Surveyor's Act on April 7, 2005

Signed [Signature] P.L.S or R.C.E. No. LS 3887



COUNTY SURVEYOR'S STATEMENT

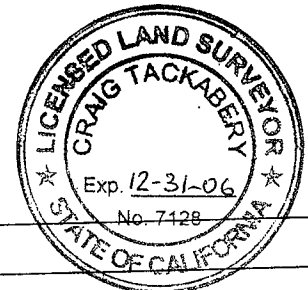
This Corner Record was received 4-15-2005

and examined and filed 6-29-2005

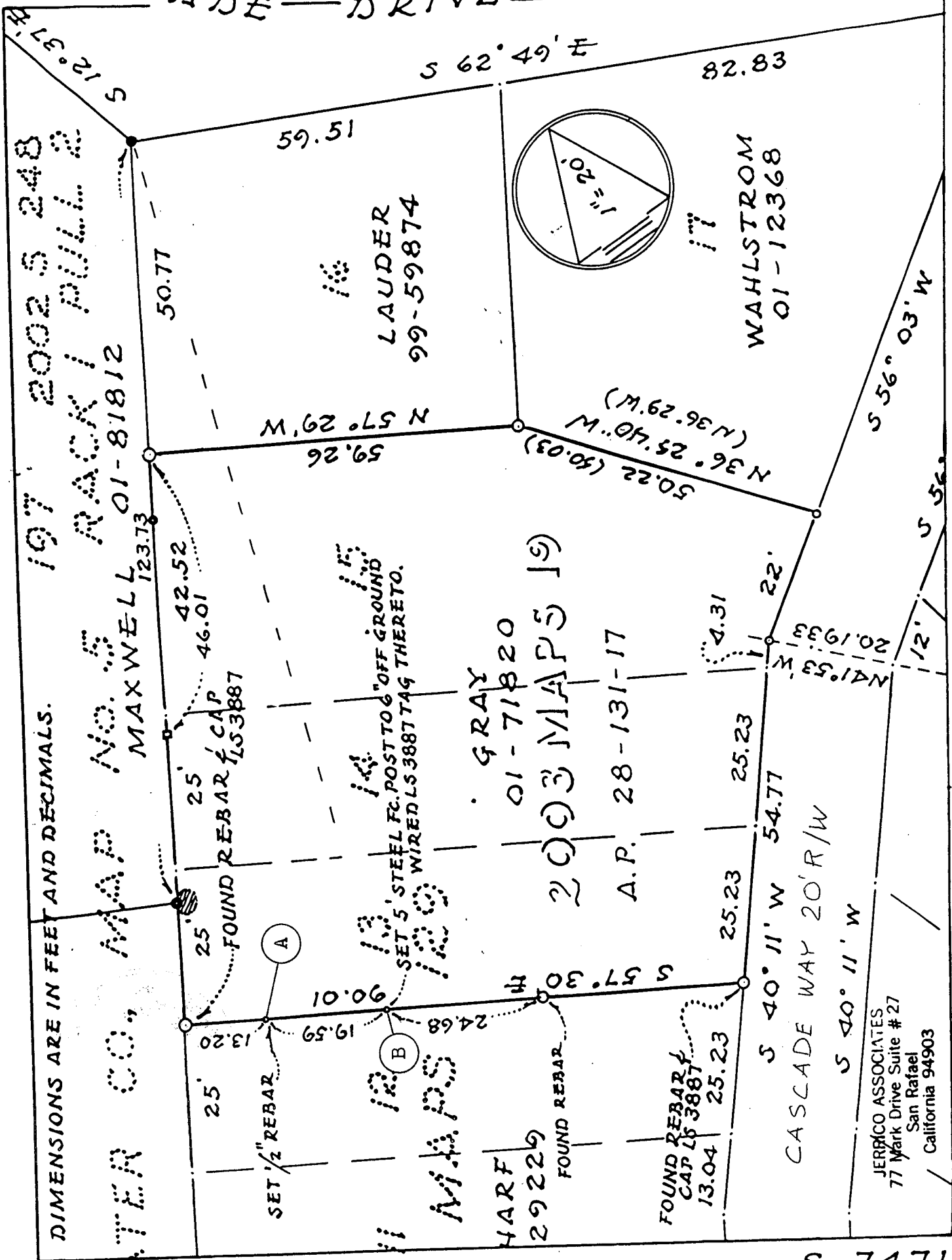
Signed [Signature] P.L.S or R.C.E. No. 7128

Title COUNTY SURVEYOR

County Surveyor's Comment _____



CASCADE DRIVE 50' R/W



DIMENSIONS ARE IN FEET AND DECIMALS.

197 2002 S 248
MAXWELL 01-81812

LAUDER
99-59874

GRAY
01-71820
2003 MAPS 19
A.P. 28-131-17

WAHLSTROM
01-12368

JERRICO ASSOCIATES
77 Mark Drive Suite # 27
San Rafael
California 94903

S-7471