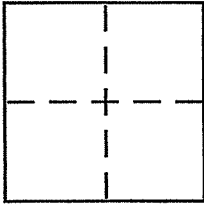


CORNER RECORD

Document Number 28-124-18
City of MILL VALLEY County of MARIN, California

Brief Legal Description PARCEL 1. 5 PM 12



CORNER TYPE

Government Corner Control
Meander Property
Rancho Other
Date of Survey JUNE 13, 2008

COORDINATES (Optional)

N. _____
E. _____
Zone _____ NAD27 NAD83
NAD83 Epoch _____
Elev. _____
Vert. Datum: NGVD29 NAVD88
Meas. Units: Metric Imperial

Corner - Left as found Found and tagged Established Reestablished Rebuilt

Identification and type of corner found: Evidence used to identify or procedure used to establish or reestablish the corner:

Found 2x2 (ORIGINAL CORNER) with RE TAG 12510
IN A DETERIORATED CONDITION AT THE
NORTHWESTERLY CORNER OF PARCEL 1, 5 PM 12
(INTERSECTION OF THE TWO COURSES 'N 49° 09' E,
143' E N 53° 58' W, 29.59'. see SKETCH ON REVERSE SIDE

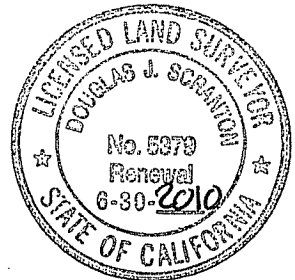
A description of the physical condition of the monument as found and as set or reset:

set 1/2" REBAR with PLS CAP 5379 "SCRANTON"
AFFIXED TO TOP OF REBAR & DRIVEN FLUSH
WITH SURROUNDING grade

SURVEYOR'S STATEMENT

This Corner Record was prepared by me or under my direction in conformance with the Land Surveyor's Act on AUGUST 14 2008

Signed Douglas J. Scranton P.L.S. or R.C.E. No. PLS 5379



COUNTY SURVEYOR'S STATEMENT

This Corner Record was received AUGUST 18, 2008

and examined and filed SEPTEMBER 12, 2008

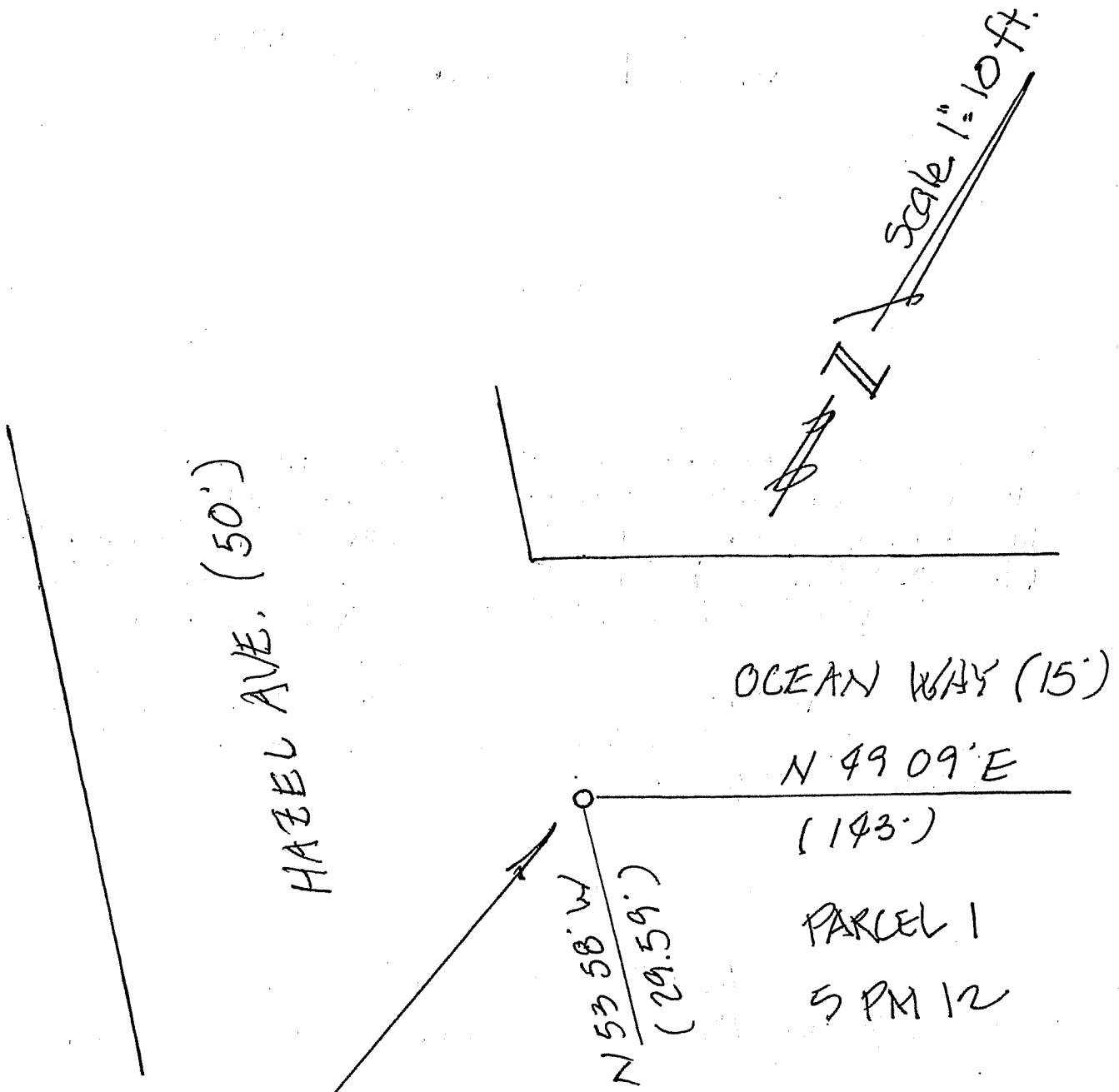
Signed [Signature] P.L.S. or R.C.E. No. 7128

Title COUNTY SURVEYOR



County Surveyor's Comment _____

PREPARED BY
D) SCRANTON SURVEYING
NEWATO



This CORNER RECORD
 Found deteriorated 2x2 HUB
 w/ RE 12510 TAG (ORIGINAL
 CORNER TO 5 PM 12)
 set 1/2" rebar with PLS CAP 5379
 TO PERPETUATE LOCATION