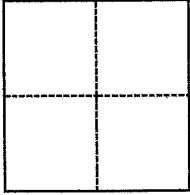


# CORNER RECORD

Agency Index DPW#19-049  
 Document Number APN 028-111-22

City of Mill Valley County of Marin, California  
 Brief Legal Description Parcel One of 3 PM 38, Marin County Records

### CORNER TYPE



- Government Corner     Control  
 Meander                     Property  
 Rancho                          Other

Date of Survey May 10, 2019

### COORDINATES (Optional)

N. \_\_\_\_\_ E. \_\_\_\_\_  
 Elevation \_\_\_\_\_  
 Units  Metric  U.S. Survey Foot  
 Horizontal Datum \_\_\_\_\_  
 Zone \_\_\_\_\_ Epoch Date \_\_\_\_\_  
 Vertical Datum \_\_\_\_\_  
 Complies with Public Resources Code §§8801-8819  
 Complies with Public Resources Code §§8890-8902

PLS Act Ref.:  8765(d)     8771     8773     Other:  
 Corner/Monument:  Left as found     Established     Rebuilt     Pre-Construction  
 Found and tagged     Reestablished     Referenced     Post-Construction

Narrative of corner identified and monument as found, set, reset, replaced, or removed:  
 See sheet #2 for description(s):

Found 5/8-inch rebar, yellow cap, RCE 29000 marking the WLY boundary line of Parcel 1, and a screw with brass tag, RCE 29000 set in stone and concrete stairs marking the angle point in the SW line. Set southerly corner of Parcel 1 with 5/8-inch rebar, yellow cap, PLS 7950 below deck and a brass nail & tag, PLS 7950 on top deck board, over rebar.

### SURVEYOR'S STATEMENT

This Corner Record was prepared by me or under my direction in conformance with  
 the Professional Land Surveyors' Act on May 10, 2019  
 Signed [Signature] P.L.S. or R.C.E. No. 7950



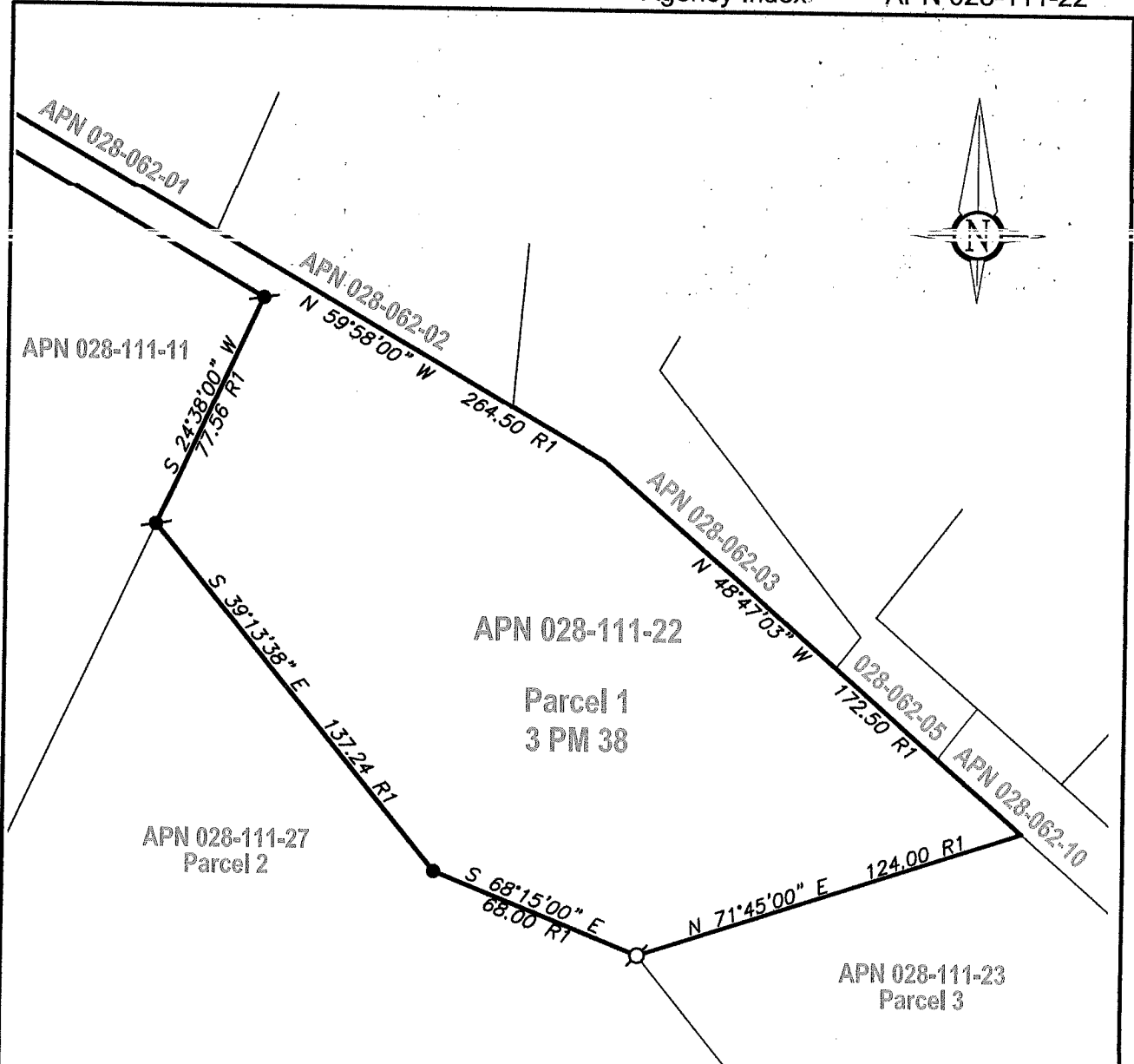
### COUNTY SURVEYOR'S STATEMENT

This Corner Record was received May 15, 2019  
 and examined and filed OCT. 03, 2019  
 Signed [Signature] P.L.S. or R.C.E. No. 9292  
 Title DEPUTY C.S.



### County Surveyor's Comment

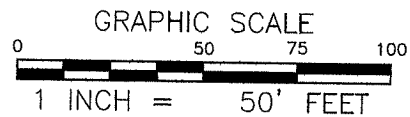
It is the opinion of the Deputy County Surveyor that the filing of this Corner Record does not comply with Business and Professions Code Section 8765(d), as sufficient monumentation was not shown to establish the precise location of the southeasterly property corner. Monuments or other evidence may exist and if recovered and considered in determining the location of the subject property's corners and lines, may result in materially alternate positions thereof.



**LEGEND**

- FOUND SCREW & BRASS TAG, RCE 29000
- ⊘ FOUND 5/8-INCH REBAR, YELLOW CAP, RCE 29000
- ⊗ SET 5/8-INCH REBAR, YELLOW CAP, PLS 7950 BELOW DECKING, AND SET BRASS NAIL & TAG, PLS 7950 IN DECK OVER REBAR
- R1 PARCEL MAP, FILED IN BOOK 3 OF PARCEL MAPS, AT PAGE 38, MARIN COUNTY RECORDS

J:\19146-Kearney\Dwg\19146CR.dwg



**1031Survey, Inc.**

HighDefinitionSurveying  
1857 Rainier Circle, Petaluma, California, 94954  
415-827-6370