

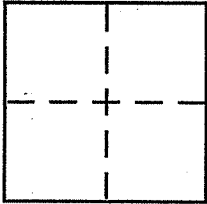
CORNER RECORD

Document Number _____

City of Mill Valley

County of _____, California

Brief Legal Description Being a Portion of Lot 46, Tamalpais Land Co. Map #5 (Rk. 1-Pg. 2)



CORNER TYPE

Government Corner Control
 Meander Property
 Rancho Other
 Date of Survey _____

COORDINATES (Optional)

N. _____
 E. _____
 Zone _____ NAD27 NAD83
 NAD83 Epoch _____
 Elev. _____
 Vert. Datum: NGVD29 NAVD88
 Meas. Units: Metric Imperial

Corner - Left as found Found and tagged Established Reestablished Rebuilt

Identification and type of corner found: Evidence used to identify or procedure used to establish or reestablish the corner:

Found Monuments as shown on Record of Survey
lands of M. Macris, 32-05-34, See page 2

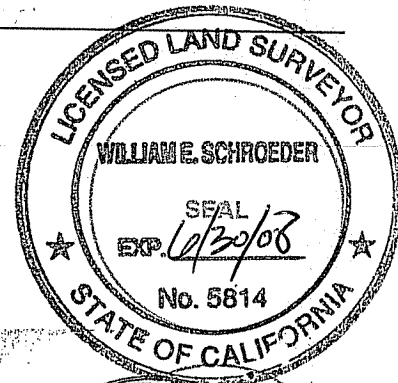
A description of the physical condition of the monument as found and as set or reset: Set nail & tag
"LS 5814", see page 2.

SURVEYOR'S STATEMENT

This Corner Record was prepared by me or under my direction in conformance with

the Land Surveyor's Act on March 30, 2007

Signed William E. Schroeder P.L.S. or R.C.E. No. 5814



COUNTY SURVEYOR'S STATEMENT

This Corner Record was received AUGUST 16, 2007

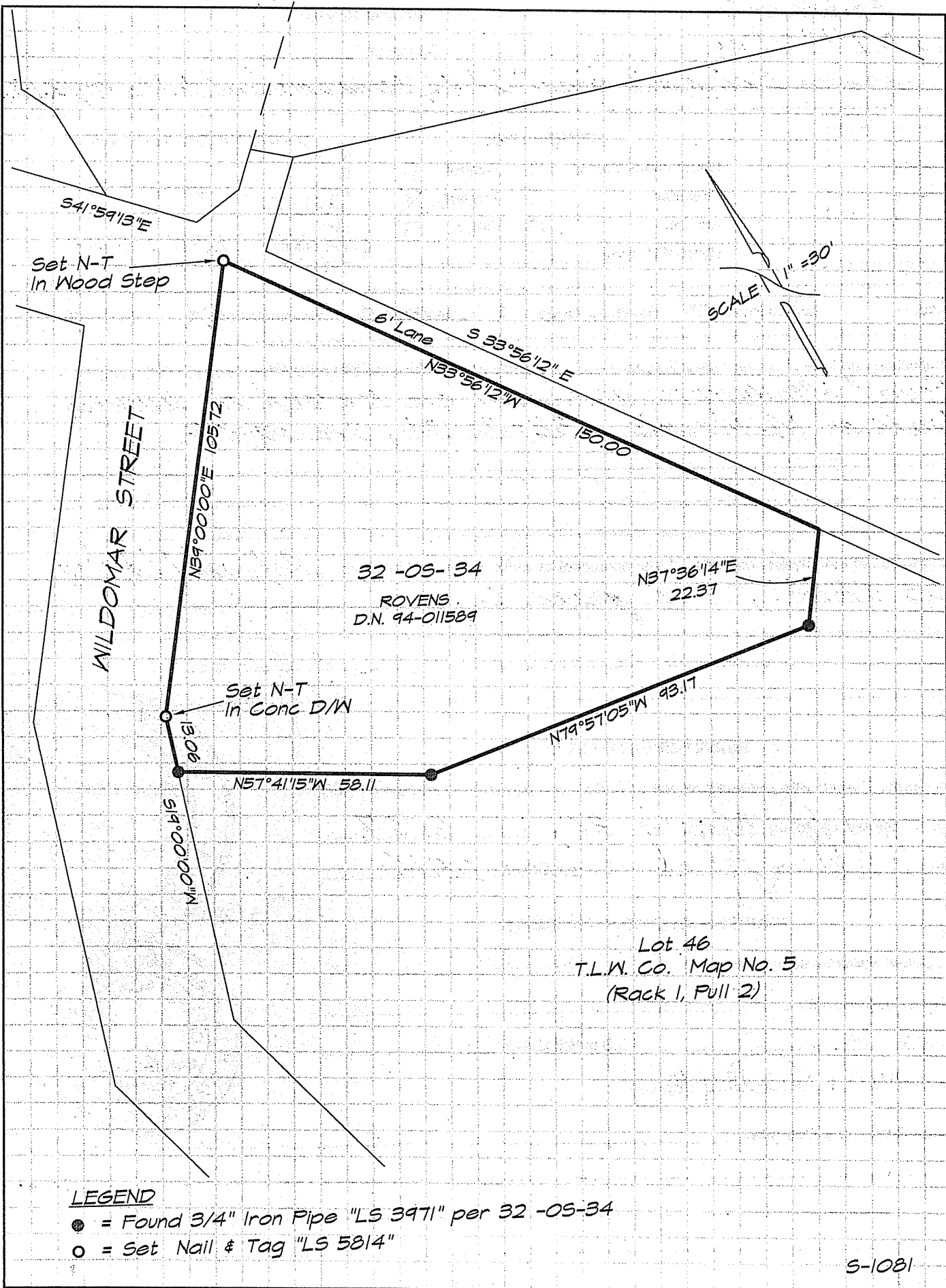
and examined and filed SEPTEMBER 18, 2007

Signed _____ P.L.S. or R.C.E. No. 7128

Title COUNTY SURVEYOR



County Surveyor's Comment _____



LEGEND

- = Found 3/4" Iron Pipe "LS 3971" per 32 -05-34
- = Set Nail & Tag "LS 5814"

S-1081