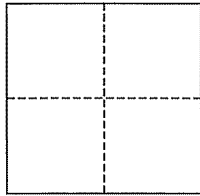


**CORNER RECORD**

City of Mill Valley

Document Number AP# 028-103-05  
County of Marin, California

Brief Legal Description Parcel 1 of 14 PM 37



**CORNER TYPE**

Government Corner  Control   
Meander  Property   
Rancho  Other   
Date of Survey \_\_\_\_\_

**COORDINATES (Optional)**

N. \_\_\_\_\_  
E. \_\_\_\_\_  
Zone \_\_\_\_\_ NAD27  NAD83   
NAD83 Epoch \_\_\_\_\_  
Elev. \_\_\_\_\_  
Vert. Datum: NGVD29  NAVD88   
Meas. Units: Metric  Imperial

**Corner-** Left as found  Found and tagged  Established  Reestablished  Rebuilt

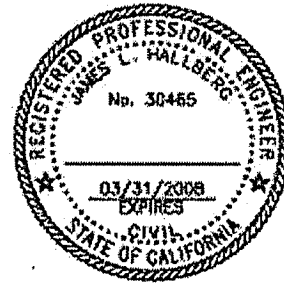
Identification and type of corner found: Evidence used to identify or procedure used to establish or reestablish the corner:  
Found Iron Pipe&Plug and Rebar (through old hub) as per 14 PM 37; Basis of Bearing was the same.

A description of the physical condition of the monument as found and as set or reset: Set 2 corners and 2 line pts as shown, per 14 PM 37.

**SURVEYOR'S STATEMENT**

This corner Record was prepared by me or under my direction in conformance with the Land Surveyor's Act on December 5, 2006

Signed [Signature] P.L.S. or R.C.E. No. 30465



**COUNTY SURVEYOR'S STATEMENT**

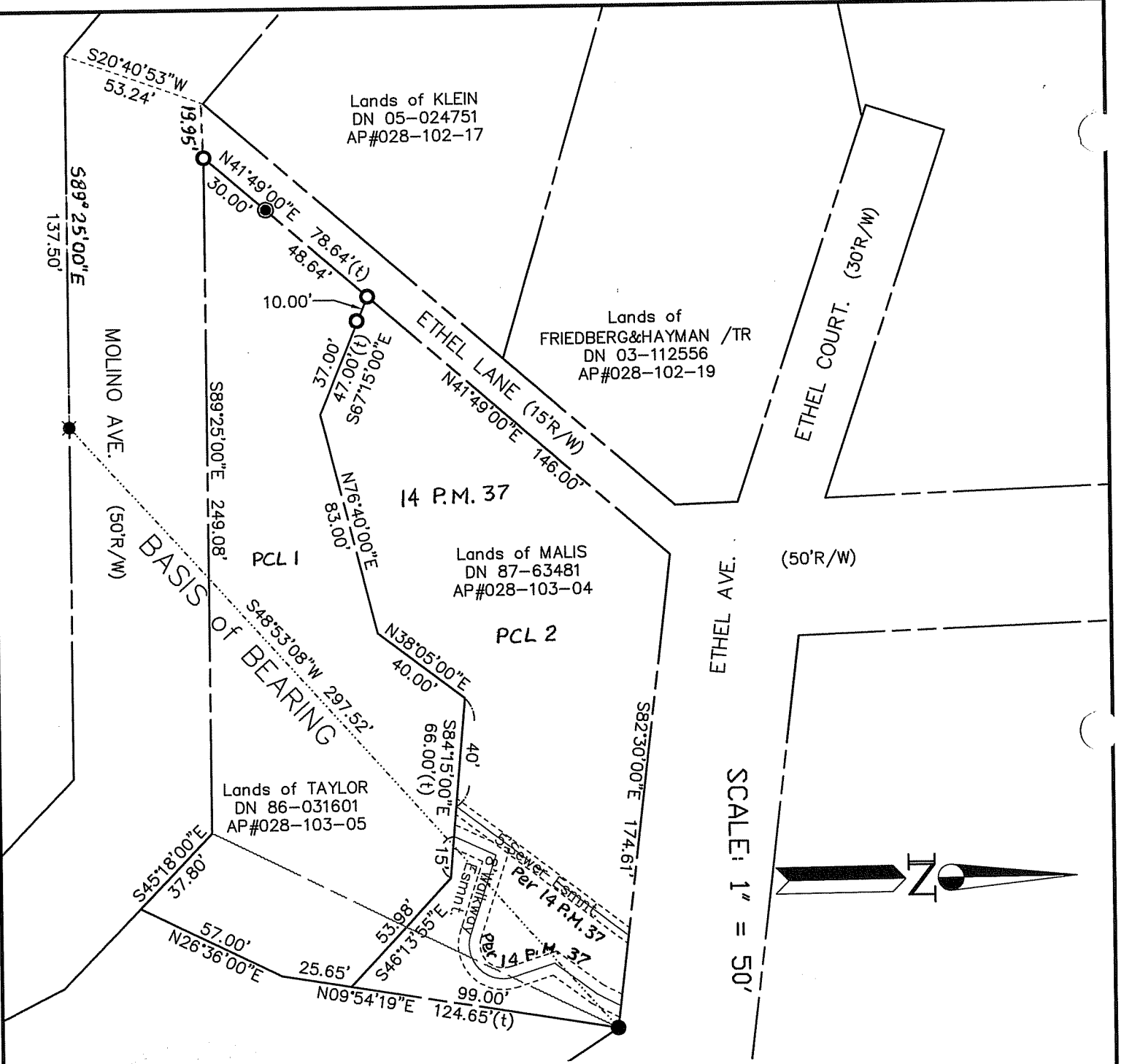
This Corner Record was received DECEMBER 8, 2006 and examined and filed JANUARY 10, 2007

Signed [Signature] P.L.S. or R.C.E. No. 7128

Title COUNTY SURVEYOR



**County Surveyor's Comment** \_\_\_\_\_



SCALE: 1" = 50'

**LEGEND**

- FOUND IP & PLUG, PER 14 PM 37
- ⊗ FOUND REBAR & CAP, PER 14 PM 37
- SET IP & PLUG, RCE 30465
- ⦿ SET NAIL/SPIKE
- (t) DENOTES TOTAL

Note: All distances are in feet and decimals thereof.

SHEET	1	OF	1
SCALE:	1" = 50'	DESIGN:	P.R.
DATE:	Nov. 2006	DRAWN:	P.R.
FILE:	2006-133	CHECKED:	J.L.H
2006-133\DWG\ROS.DWG,COR-REC			

**J.L. ENGINEERING**  
**CIVIL ENGINEERS-LAND SURVEYORS**  
 1539 4th ST., SAN RAFAEL, CA. 94901 (415) 457-6647

**P/L Mons.**  
 Lands of Taylor - 77 Molino Ave.  
 APN 028-103-05, Mill Valley, Marin County, CA