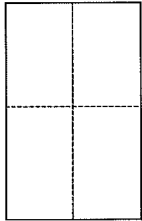


**CORNER RECORD**

Document Number 028-102-06

City of Mill Valley County of Marin, California

Brief Legal Description A.P.N. 028-102-06, Portion of lots 6 & 7, 3 R.M. 82, M.C.R.



**CORNER TYPE**

Government Corner  Control   
 Meander  Property   
 Rancho  Other   
 Date of Survey May 1st 2013

**COORDINATES (Optional)**

N. \_\_\_\_\_  
 E. \_\_\_\_\_  
 Zone \_\_\_\_\_ NAD27  NAD83   
 NAD83 Epoch \_\_\_\_\_  
 Elev. \_\_\_\_\_  
 Vert. Datum: NGVD29  NAVD88   
 Meas. Units: Metric  Imperial

Corner – Left as found  Found and tagged  Established  Reestablished  Rebuilt

Identification and type of corner found: Evidence used to identify or procedure used to establish or reestablish the corner:

Street monuments per 2011 Maps 149 were found in record position and used to re-establish the location of the lands of Mak shown on said map.

A description of the physical condition of the monument as found and as set or reset: \_\_\_\_\_

Set (1) Mag & Washer L.S. 7237, SW cor of property  
Set (2) 1/2" iron pipes, L.S. 7237, SE cor & angle pt of westerly line of property  
Found (4) rebar & cap L.S. 6344, per 2005 M 252  
Found (1) Mag & washer L.S. 6344, per 2005 M 252

**SURVEYOR'S STATEMENT**

This Corner Record was prepared by me or under my direction in conformance with the Land Surveyor's Act on May 3<sup>rd</sup> 2013  
 Signed Michael E. Ford P.L.S. or R.C.E. No. 7237



**COUNTY SURVEYOR'S STATEMENT**

This Corner Record was received MAY 9, 2013  
 and examined and filed JUNE 14<sup>th</sup> 2013  
 Signed Richard G. Simonitch P.L.S. or R.C.E. No. 7821  
 Title DEPUTY CO SURVEYOR

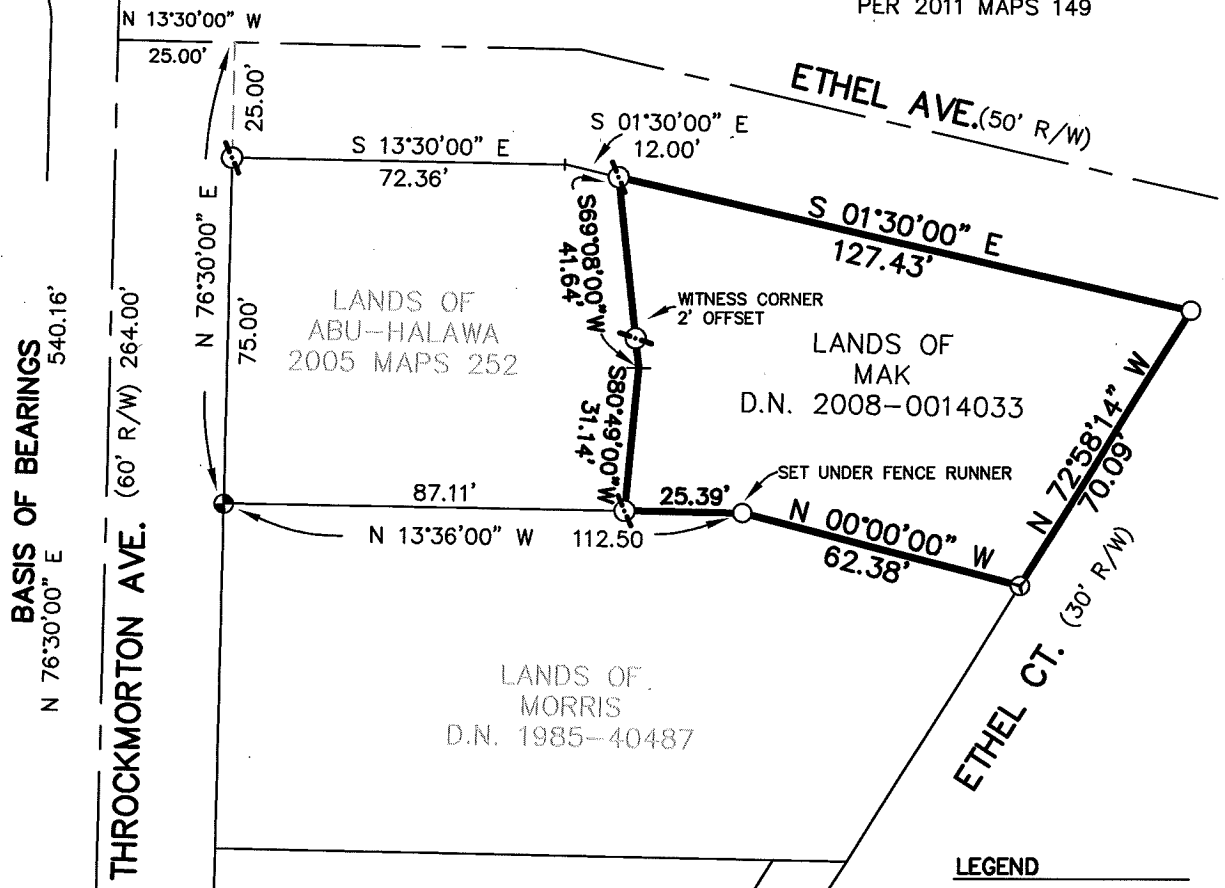


County Surveyor's Comment

\_\_\_\_\_  
 \_\_\_\_\_  
 \_\_\_\_\_

**NOTE:**

ALL COURSES SHOWN HEREON  
ARE RECORD AND MEASURED  
PER 2011 MAPS 149



**BASIS OF BEARINGS**  
540.16"  
N 76°30'00" E

**THROCKMORTON AVE.** (60' R/W) 264.00'

**ETHEL AVE.** (50' R/W)

**ETHEL CT.** (30' R/W)

LANDS OF  
ABU-HALAWA  
2005 MAPS 252

LANDS OF  
MAK  
D.N. 2008-0014033

LANDS OF  
MORRIS  
D.N. 1985-40487

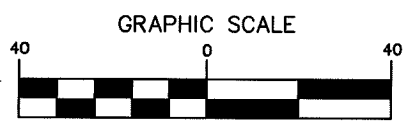
2011 MAPS 149

**LEGEND**

- FOUND  $\odot$  MONUMENT PER 2011 MAPS 149
- SET 1/2" IRON PIPE LS 7237
- ⊗ SET MAG AND WASHER LS 7237
- ⊙ FOUND MAG AND WASHER LS 6344, PER 2005 M 252
- ⊕ FOUND REBAR AND CAP LS 6344, 2005 M 252

**BASIS OF BEARINGS**

N 76°30'00" E BETWEEN  
FOUND  $\odot$  MONUMENTS AS  
SHOWN ON 2011 MAPS 149.



( IN FEET )  
1 inch = 40 ft.



2300 bethards drive, suite J  
 santa rosa, california 95405  
 p 707.542.8513 - f 707.542.1825  
 www.michaelfordinc.com