

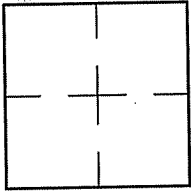
CORNER RECORD

Document Number A.P. 028-072-28

City of MILL VALLEY

County of MARIN, California

Brief Legal Description 2006 M 035



CORNER TYPE		COORDINATES (Optional)	
Government Corner	<input type="checkbox"/>	Control	<input type="checkbox"/>
Meander	<input type="checkbox"/>	Property	<input checked="" type="checkbox"/>
Rancho	<input type="checkbox"/>	Other	<input type="checkbox"/>
Date of Survey <u>8/2010</u>			

N. _____
 E. _____
 Zone _____ NAD27 NAD83
 NAD83 Epoch _____
 Elev. _____
 Vert. Datum: NGVD29 NAVD88
 Meas. Units: Metric Imperial

Corner- Left as found Found and tagged Established Reestablished Rebuilt

Identification and type of corner found: Evidence used to identify or procedure used to establish or reestablish the corner:
REESTABLISHED THE COMMON BOUNDARY LINE BETWEEN LANDS OF WALDRON AND LANDS OF WINTERLING AS WELL AS BETWEEN LANDS OF KLIP AND BANDUCCI AND LANDS OF WINTERLING AS SHOWN ON 2006 M 035 USING FOUND POINTS FROM 2006 M 035 AND AS SHOWN ON SHEET 2.

A description of the physical condition of the monument as found and as set or reset: SEE SHEET 2.

SURVEYOR'S STATEMENT

This Corner Record was prepared by me or under my direction in conformance with

the Land Surveyor's Act on DECEMBER 22, 2010

Signed Lawrence P Doyle P.L.S. or R.C.E. No. P.L.S. 4694



COUNTY SURVEYOR'S STATEMENT

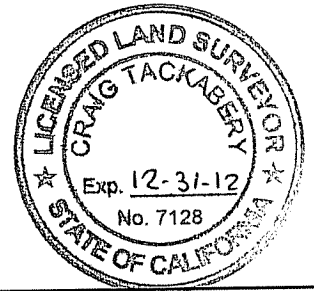
This Corner Record was received FEBRUARY 22, 2011

and examined and filed APRIL 4, 2011

Signed [Signature] P.L.S. or R.C.E. No. 7128

Title COUNTY SURVEYOR

County Surveyor's Comment _____



MILLER AVENUE

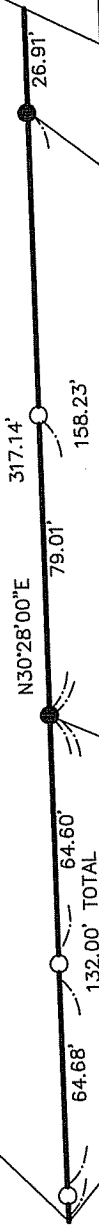
LANDS OF WINTERLING

LANDS OF KLIP AND BANDUCCI

LANDS OF WALDRON

ETHEL AVENUE

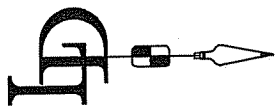
16 P.M. 4



POINT FALLS
S64°47'38"W 0.97'
OF TRUE CORNER
2006 M 035

LEGEND

- FOUND REBAR/CAP L.S. 6784
- ⊗ FOUND PIPE/PLUG RE 12094
- SET PIPE/PLUG L.S. 4694
- ∅ SET MAG NAIL/TAG L.S. 4694



CORNER RECORD
2006 M 035

MILL VALLEY MARIN COUNTY CALIFORNIA	SCALE: 1" = 50'	DRAWN BY: SHEET 2 OF 2
LAWRENCE P. DOYLE LAND SURVEYOR/CIVIL ENGINEER	DATE: 12/2010	
100 HELENS LANE MILL VALLEY CA 94941 (415-388-9585)		DRAWING NO. 2040