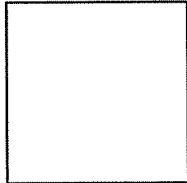


CORNER RECORD

APN 028-055-29 & 30

Document No. ~~120536~~ 270536

City of Mill Valley County of Marin, California
Brief Legal Description Lot 33 & 34, Blk. 2, Rack 1 Pull 2 & 27 OS 36



CORNER TYPE

COORDINATES
(Optional)

Government Corner Control
Meander Property
Rancho Other
Date of Survey August 27, 2007

N. _____
E. _____
Zone _____ Datum _____
Elev. _____

Corner- Left as found Found and tagged Established Reestablished Rebuilt

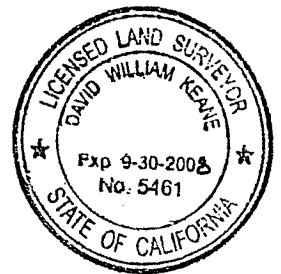
Identification and type of corner found: Evidence used to identify or procedure to establish or reestablish the corner:
Established property corner on Lot 33 per found std. street monuments as shown on herein sht. 2 and per Record of Survey, 27 OS 36, County of Marin.

A description of the physical condition of the monument as found and as set or reset:
Set nail and tag, LS 5461 at location shown on herein sht. 2. Found 3/4" IP w/cap LS 3971 and standard street monuments, shown on herein sht. 2.

SURVEYOR'S STATEMENT

This Corner Record was prepared by me or under my direction in conformance with the Land Surveyors Act on Sept. 12, 2007.

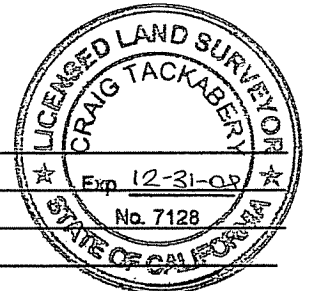
Signed *David William Keane* PLS Number 5461



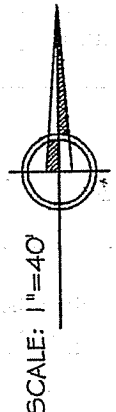
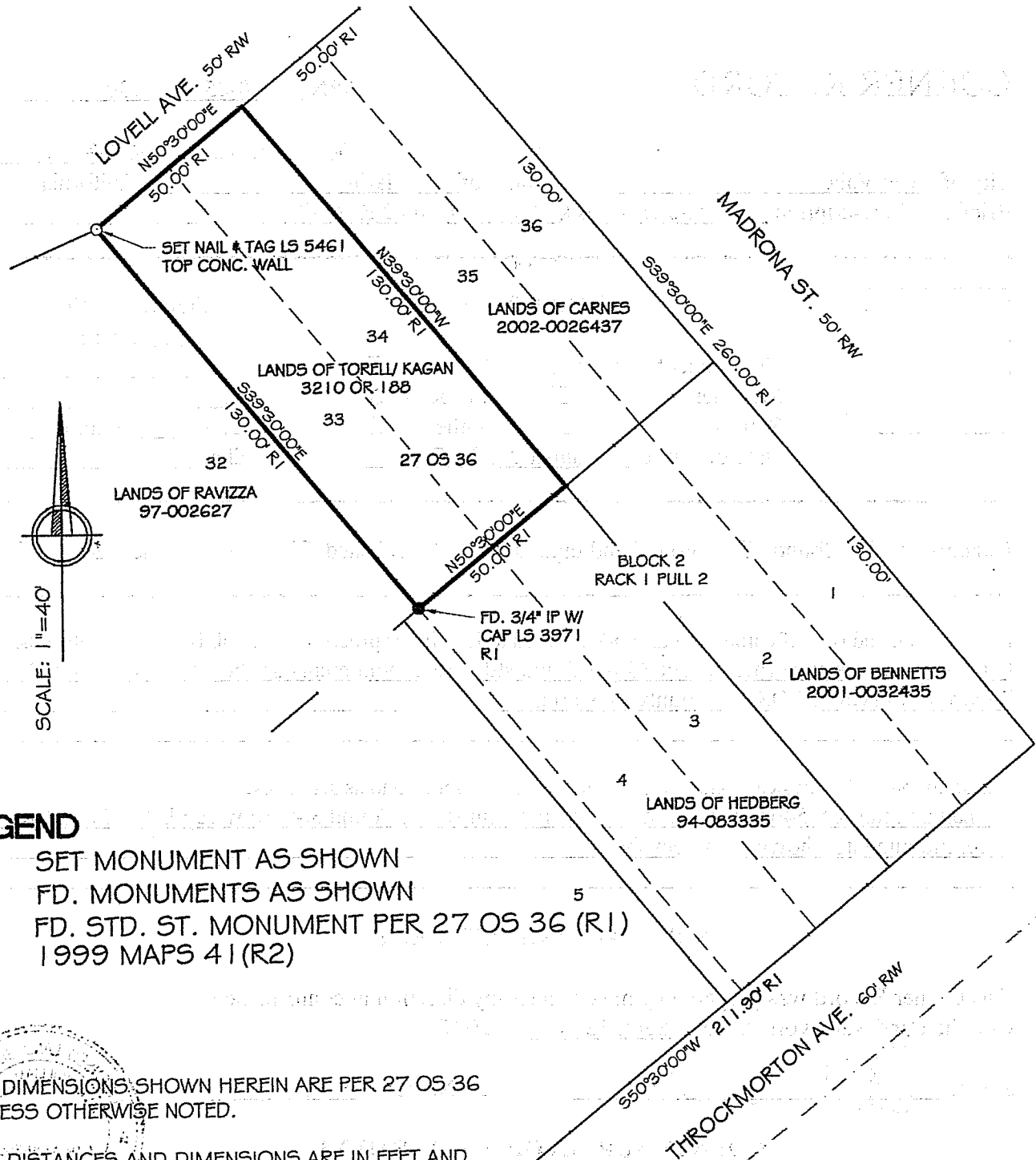
COUNTY SURVEYOR'S STATEMENT

This Corner Record was received SEPT. 14, 2007 and examined and filed OCTOBER 15, 2007.

Signed *[Signature]* Title COUNTY SURVEYOR



County Surveyor's Comments _____



LEGEND

- SET MONUMENT AS SHOWN
- FD. MONUMENTS AS SHOWN
- ⊙ FD. STD. ST. MONUMENT PER 27 OS 36 (R1)
1999 MAPS 41 (R2)

NOTE:

1. ALL DIMENSIONS SHOWN HEREIN ARE PER 27 OS 36 UNLESS OTHERWISE NOTED.
2. ALL DISTANCES AND DIMENSIONS ARE IN FEET AND DECIMALS THEREOF.
3. EASEMENTS IF ANY ARE NOT SHOWN.
4. APN. 028-055-29 #30.

DAVID KEANE
Professional Land Surveyors

tel: (415) 927-8801 fax: (415) 927-8802
5710 Paradise Drive, Ste. 8
Corte Madera, CA 94925

SHEET 2 OF 2

JOB NO. 07-07-26 DATE: 09-12-07

BASIS OF BEARING
576°30'00"W R1, R2
540.00' R2 (540.15' R1)