

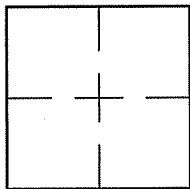
**CORNER RECORD**

Document Number A.P. 028-054-03

City of MILL VALLEY

County of MARIN, California

Brief Legal Description LOTS 3 & 4, BLOCK 8, RACK 1 PULL 12



CORNER TYPE                      COORDINATES (Optional)

Government Corner       Control

Meander                       Property

Rancho                       Other

Date of Survey 11/29/11

N. \_\_\_\_\_  
 E. \_\_\_\_\_  
 Zone \_\_\_\_\_ NAD27       NAD83   
 NAD83 Epoch \_\_\_\_\_  
 Elev. \_\_\_\_\_  
 Vert. Datum:      NGVD29       NAVD88   
 Meas. Units:      Metric       Imperial

Corner-    Left as found     Found and tagged     Established     Reestablished     Rebuilt

Identification and type of corner found: Evidence used to identify or procedure used to establish or reestablish the corner:  
ESTABLISHED LOTS 3 & 4, BLOCK 8, RACK 1 PULL 12 USING THE STREET MONUMENTS ON THROCKMORTON  
AVENUE PER 27 O.S. 36. THE DEED 2011-0056050 REFERENCES THE RECORDED MAP ENTITLED 'TAMALPAIS  
LAND AND WATER COMPANY, MAP NO. 2' AS BEING RECORDED IN BOOK 1 OF MAPS AT PAGE 64 BUT WE  
HAVE FOUND THAT MAP TO BE RECORDED AS RACK 1 PULL 12.

A description of the physical condition of the monument as found and as set or reset: SEE SHEET 2.

**SURVEYOR'S STATEMENT**

This Corner Record was prepared by me or under my direction in conformance with

the Land Surveyor's Act on NOVEMBER 29, 2011

Signed Lawrence P. Doyle      P.L.S. or R.C.E. No. P.L.S. 4694



**COUNTY SURVEYOR'S STATEMENT**

This Corner Record was received JANUARY 20, 2012

and examined and filed FEBRUARY 15, 2012

Signed [Signature]      P.L.S. or R.C.E. No. 7128

Title COUNTY SURVEYOR

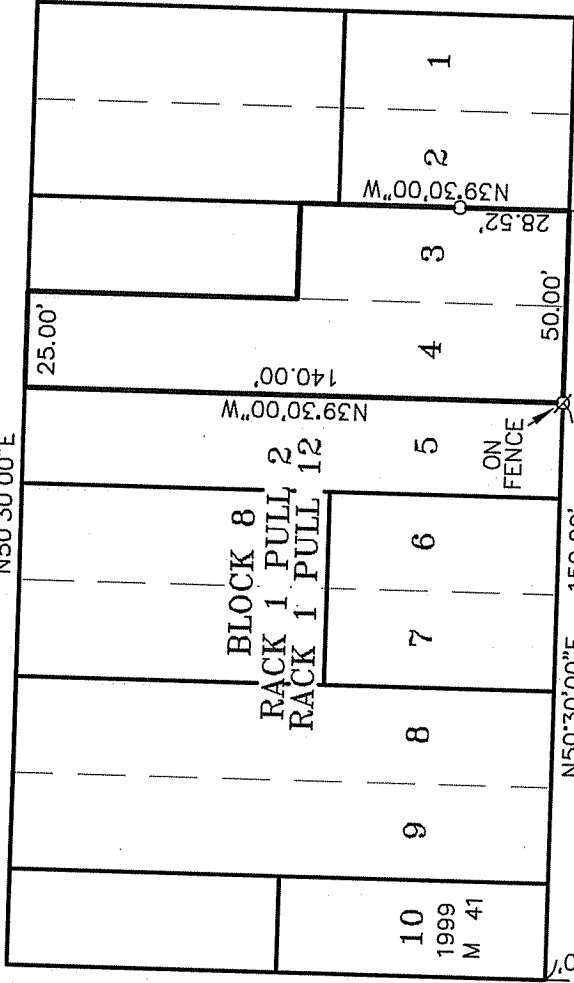


County Surveyor's Comment \_\_\_\_\_

**BAYVIEW AVENUE**

40' R/W

N50°30'00"E



**BERNARD STREET**

50' R/W

**MADRONA LANE**

25' R/W

**LOVELL AVENUE**

50' R/W

**MADRONA STREET**

50' R/W

**AVENUE**

N50°30'00"E

60' R/W

**BLOCK 6**  
RACK 1 PULL 2  
RACK 1 PULL 12

**LEGEND**

- SET NAIL/TAG L.S. 4694
- SET PIPE/PLUG L.S. 4694
- FOUND STREET MONUMENT

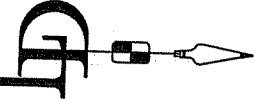
27 OS 36

**BLOCK 2**  
RACK 1 PULL 2  
RACK 1 PULL 12

211.90'

**BASIS OF BEARING THROCKMORTON**  
540.00'  
S76°30'00"W  
244.98'

**BLOCK 1**  
RACK 1 PULL 2  
RACK 1 PULL 12



**CORNER RECORD**  
MILL VALLEY MARIN COUNTY CALIFORNIA  
LOTS 3 & 4, BLOCK 8, RACK 1 PULL 12

SCALE: 1" = 50'

DATE: 11/29/11

**LAWRENCE P. DOYLE**  
LAND SURVEYOR/CIVIL ENGINEER

100 HELENS LANE MILL VALLEY CA 94941 (415-388-9585)

DRAWN BY:  
SHEET 2 OF 2

DRAWING NO.  
2193