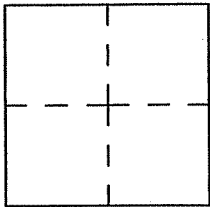


CORNER RECORD

Document number A.P.N. 028-053-14

City of MILL VALLEY County of MARIN, California

Brief Legal Description BEING PARCEL "A" AS SHOWN UPON 2007 P.M. 185,
MARIN COUNTY RECORDS



CORNER TYPE

Government Corner Control
Meander Property
Rancho Other
Date of Survey _____

COORDINATES

N. _____
E. _____
Zone _____ Datum _____
Elev. _____

Corner--- Left as found found and tagged Established Reestablished Rebuilt

Identification and type of corner found: Evidence used to identify or procedure used to establish or reestablish the corner:
UTILIZED MONUMENTS AS SHOWN UPON 2007 P.M. 185 AS A BASIS OF BEARINGS
TO MONUMENT PROPERTY CORNERS OF PARCEL "A" AS SHOWN UPON ATTACHED
DRAWING.

A description of the physical condition of the monument as found and as set or reset.
FOUND WELL MONUMENTS, MEASURED PER 2007 P.M. 185

SURVEYOR'S STATEMENT

This Corner Record was prepared by me or under my direction in conformance with
the Land Surveyor's Act on December 26 2008.

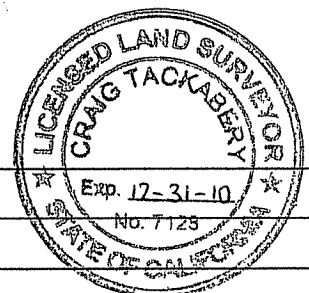
Signed [Signature] L.S. Number 7744

COUNTY SURVEYOR'S STATEMENT

This Corner Record was received DECEMBER 29, 2008 and examined
and filed FEBRUARY 9, 2009.

Signed [Signature] Title COUNTY SURVEYOR

County Surveyor's Comment _____

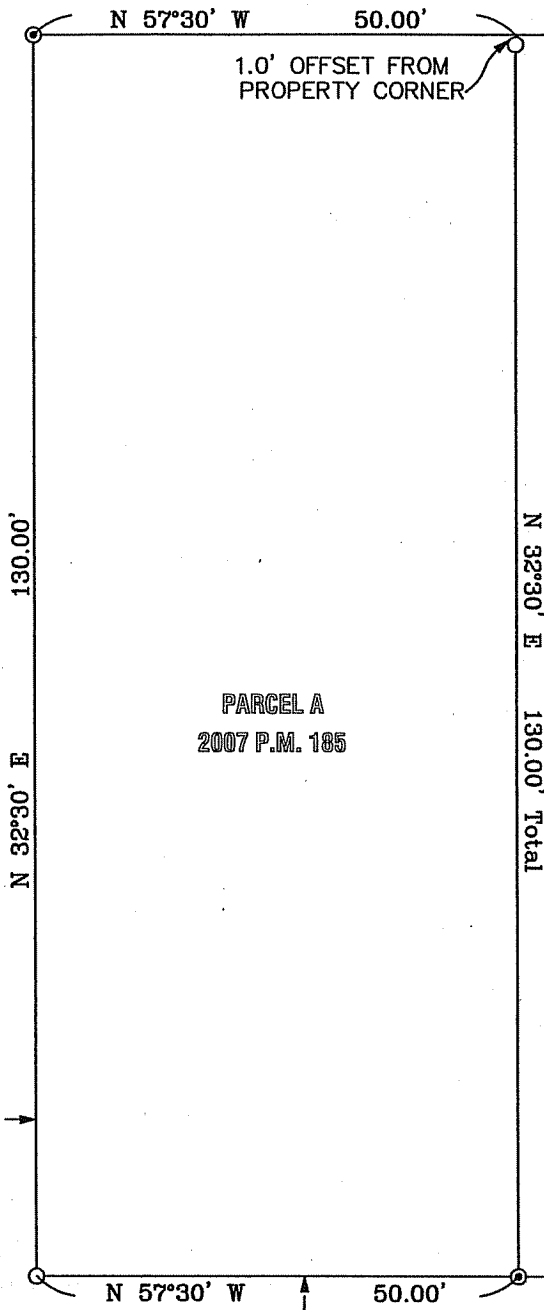


- FOUND WELL MONUMENT PER 2007 P.M. 185
- SET 1/2" REBAR & CAP, P.L.S. 7744
- ⊙ SET LEAD & BRASS TAG, P.L.S. 7744

SCALE: 1" = 20'

CENTERLINE

OLD MILL STREET



PARCEL A
2007 P.M. 185

PARCEL B

N 32°30' E
130.00' Total

N 57°30' W 50.00'

THROCKMORTON AVENUE

BASIS OF BEARINGS
N 57°30' W

35.00'

25.00'

1.0' OFFSET FROM
PROPERTY CORNER