

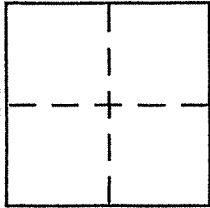
CORNER RECORD

Document Number APN 28-021-05

City of MILL VALLEY

County of MARIN, California

Brief Legal Description No. 91 East Blithedale Ave, APN 28-021-05
SHOWN ON 27 O.S. 85



CORNER TYPE

- Government Corner Control
- Meander Property
- Rancho Other
- Date of Survey _____

COORDINATES (Optional)

- N. _____
- E. _____
- Zone _____ NAD27 NAD83
- NAD83 Epoch _____
- Elev. _____
- Vert. Datum: NGVD29 NAVD88
- Meas. Units: Metric Imperial

Corner -- Left as found Found and tagged Established Reestablished Rebuilt

Identification and type of corner found: Evidence used to identify or procedure used to establish or reestablish the corner:

See Back

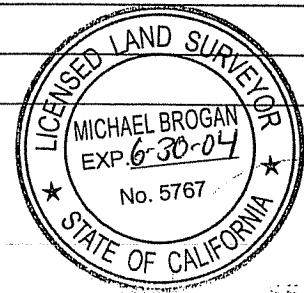
A description of the physical condition of the monument as found and as set or reset:

See Back

SURVEYOR'S STATEMENT

This Corner Record was prepared by me or under my direction in conformance with the Land Surveyor's Act on April 12, 2004

Signed Michael A. Brogan P.L.S or R.C.E. No. LS 5767



COUNTY SURVEYOR'S STATEMENT

This Corner Record was received APRIL 16, 2004

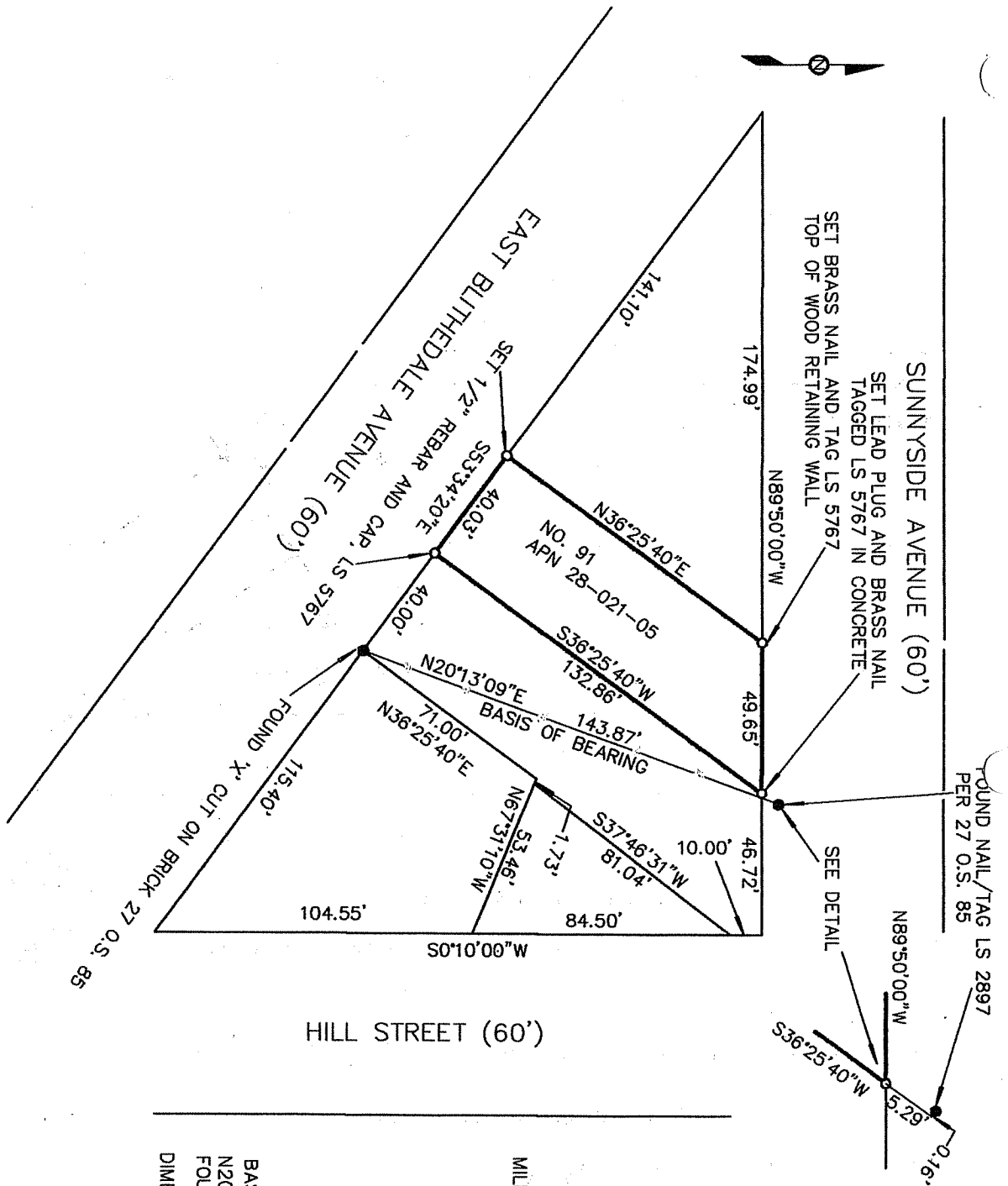
and examined and filed APRIL 29, 2004

Signed Craig Tackabery P.L.S or R.C.E. No. 7128

Title COUNTY SURVEYOR



County Surveyor's Comment _____



HILL STREET (60')

CORNER RECORD
 APN 28-021-05
 NO. 91 EAST BLITHEDALE AVENUE
 MILL VALLEY MARIN COUNTY CALIFORNIA

M. BROGAN AND ASSOCIATES, INC.
 100 LABREA WAY
 SAN RAFAEL CA 94903
 JOB NO. 5601 FEBRUARY 2004
 NOT TO SCALE

BASIS OF BEARING:
 N20°13'09"E 143.87' MEAS/CALC BETWEEN
 FOUND POINTS PER 27 O.S. 85, AS SHOWN
 DIMENSIONS ARE IN FEET AND DECIMALS THEF