

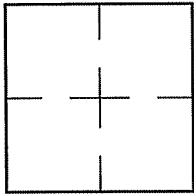
CORNER RECORD

Document Number A.P. 028-011-15

City of MILL VALLEY

County of MARIN, California

Brief Legal Description PARCEL 1 2008 M. 15



CORNER TYPE COORDINATES (Optional)

Government Corner Control

Meander Property

Rancho Other

Date of Survey 10/02/11

N. _____
 E. _____
 Zone _____ NAD27 NAD83
 NAD83 Epoch _____
 Elev. _____
 Vert. Datum: NGVD29 NAVD88
 Meas. Units: Metric Imperial

Corner- Left as found Found and tagged Established Reestablished Rebuilt

Identification and type of corner found: Evidence used to identify or procedure used to establish or reestablish the corner:
REESTABLISHED PARCEL 1 OF 2008 M. 15 BASED ON FOUND CORNERS AND AS SHOWN ON SHEET 2

A description of the physical condition of the monument as found and as set or reset: SEE SHEET 2.

SURVEYOR'S STATEMENT

This Corner Record was prepared by me or under my direction in conformance with

the Land Surveyor's Act on OCTOBER 2 2011

Signed Lawrence P Doyle P.L.S. or R.C.E. No. P.L.S. 4694



COUNTY SURVEYOR'S STATEMENT

This Corner Record was received NOVEMBER 2, 2011

and examined and filed DECEMBER 22, 2011

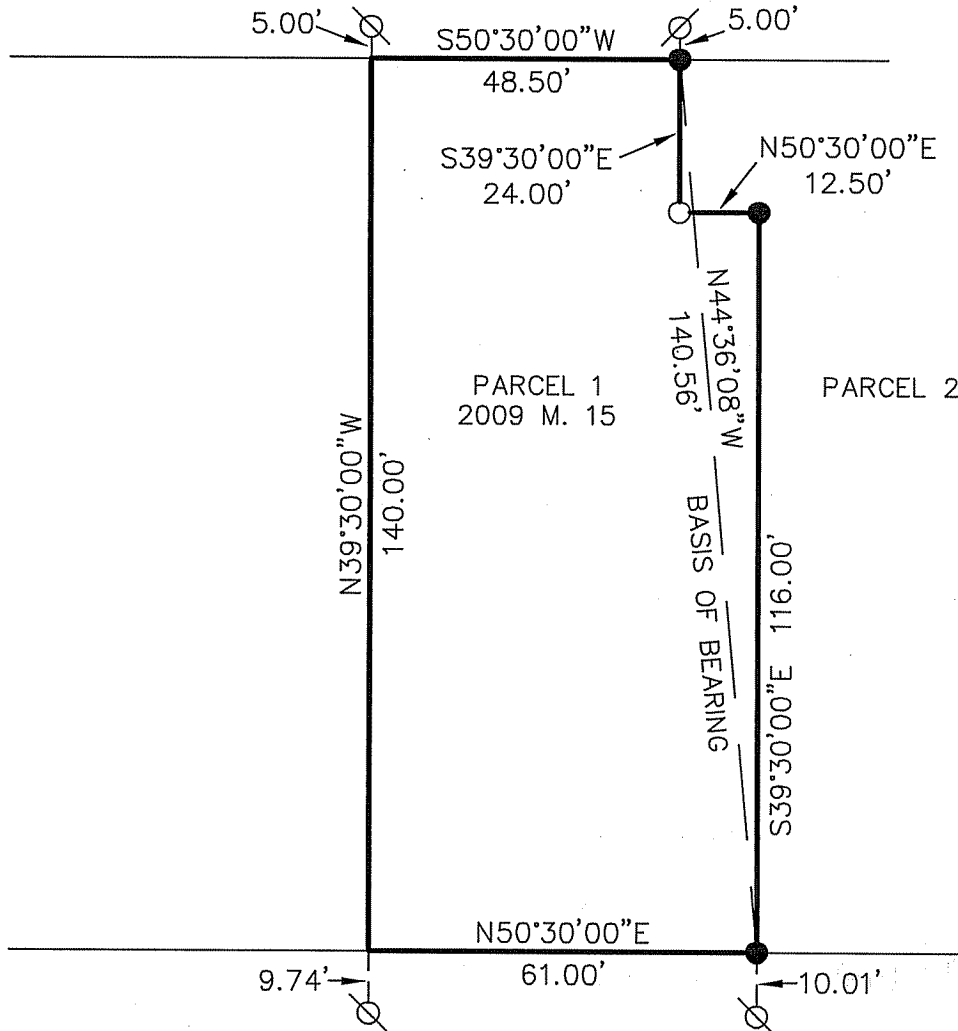
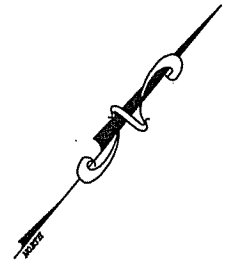
Signed [Signature] P.L.S. or R.C.E. No. 7128

Title COUNTY SURVEYOR

County Surveyor's Comment _____



BAYVIEW AVENUE
30' R/W



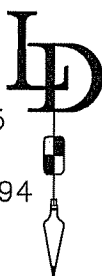
LOVELL AVENUE
50' R/W

BASIS OF BEARING

THE BASIS OF BEARING FOR THIS SURVEY IS N44°36'08"W BETWEEN FOUND POINTS PER 2009 M. 15

LEGEND

- FOUND REBAR & CAP, L.S. 5065 PER 2009 M. 15
- SET 3/4" PIPE & PLUG, L.S. 4694
- ⊗ SET NAIL & TAG, L.S. 4694



CORNER RECORD 2008 M. 15		
MILL VALLEY MARIN COUNTY CALIFORNIA		
SCALE: 1" = 30'	LAWRENCE P. DOYLE	DRAWN BY:
DATE: 10/02/11		SHEET 1 OF 1
LAND SURVEYOR/CIVIL ENGINEER		
100 HELENS LANE MILL VALLEY CA 94941 (415-388-9585)		
		DRAWING NO. 2108