

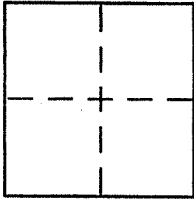
CORNER RECORD

Document Number APN 026-221-04, 05

City of CORTE MADERA

County of MARIN, California

Brief Legal Description Lots 7 & 8 PER 10 RM 99



CORNER TYPE

Government Corner Control
Meander Property
Rancho Other
Date of Survey 08-12-11

COORDINATES (Optional)

N. _____
E. _____
Zone _____ NAD27 NAD83
NAD83 Epoch _____
Elev. _____
Vert. Datum: NGVD29 NAVD88
Meas. Units: Metric Imperial

Corner - Left as found Found and tagged Established Reestablished Rebuilt

Identification and type of corner found: Evidence used to identify or procedure used to establish or reestablish the corner:

See page 2 of 2

A description of the physical condition of the monument as found and as set or reset:

See page 2 of 2

SURVEYOR'S STATEMENT

This Corner Record was prepared by me or under my direction in conformance with the Land Surveyor's Act on 8/16 2011

Signed [Signature] P.L.S or R.C.E. No. 6784



COUNTY SURVEYOR'S STATEMENT

This Corner Record was received 8-18-2011

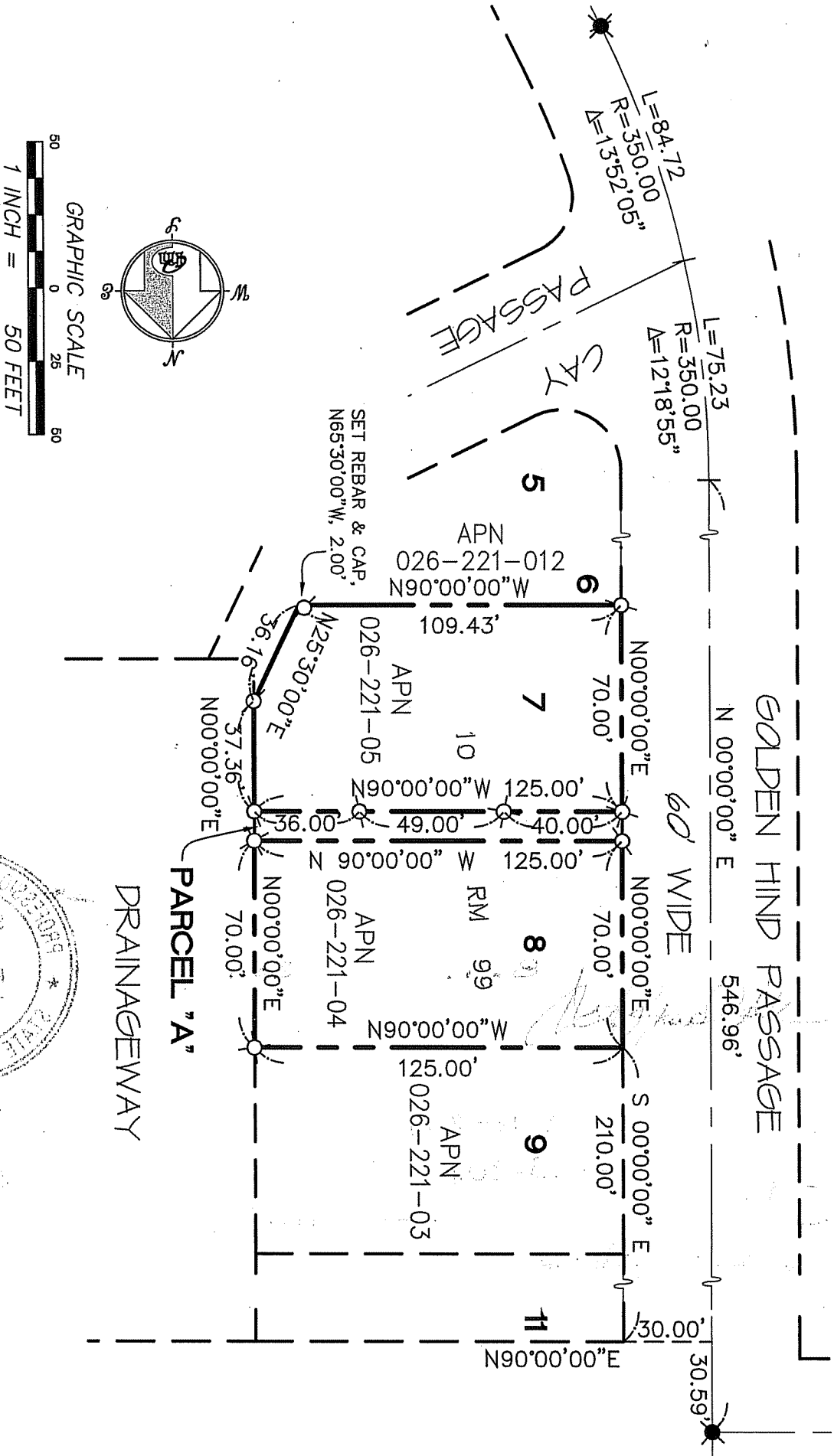
and examined and filed 9-13-2011

Signed [Signature] P.L.S or R.C.E. No. 7128

Title COUNTY SURVEYOR

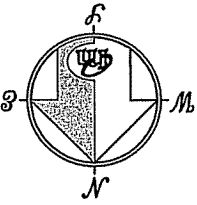


County Surveyor's Comment _____



REFERENCE

"MAP OF MARINER COVE UNIT FOUR"
 FILED FOR RECORD FEBRUARY 10,
 1961 IN VOLUME 10 OF MAPS, AT
 PAGE 99, MARIN COUNTY RECORDS.
 [A]

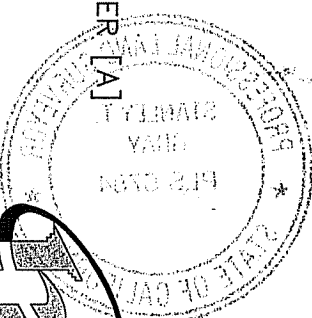


LEGEND

- ⊗ FOUND STREET MON PER [A]
- ⊗ SET 5/8" REBAR WITH CAP, PLS 6784
- ⊗ SET BRASS NAIL WITH BRASS TAG, PLS 6784 ON TOP OF FENCE

NOTE
 RECORD=MEASURED

CORNER RECORD



MERIDIAN SURVEYING ENGINEERING, INC.

1812 UNION STREET
 SAN FRANCISCO, CA 94123
 (415) 440-4131
 info@meridiansurvey.com
 777 GRAND AVENUE, SUITE 202
 SAN RAFAEL, CA 94901
 (415) 456-6450