

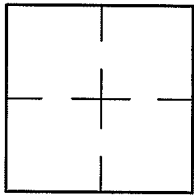
CORNER RECORD

Document Number A.P.# 026-142-20 & 21

City of CORTE MADERA

County of MARIN, California

Brief Legal Description LOTS 183 & 184, 8 R.M. 110



CORNER TYPE

COORDINATES (Optional)

Government Corner Control

Meander Property

Rancho Other

Date of Survey 02/08/13

N. _____
 E. _____
 Zone _____ NAD27 NAD83
 NAD83 Epoch _____
 Elev. _____
 Vert. Datum: NGVD29 NAVD88
 Meas. Units: Metric Imperial

Corner- Left as found Found and tagged Established Reestablished Rebuilt

Identification and type of corner found: Evidence used to identify or procedure used to establish or reestablish the corner:

REESTABLISHED REAR LINES OF LOTS 183 AND 184 PER 8 R.M. 110

BASED UPON FOUND STREET MONUMENTS ON SONORA WAY PER 8 R.M. 110 AND AS SHOWN ON SHEET 2

A description of the physical condition of the monument as found and as set or reset: SEE SHEET 2.

SURVEYOR'S STATEMENT

This Corner Record was prepared by me or under my direction in conformance with

the Land Surveyor's Act on FEBRUARY 8 2013

Signed Lawrence P. Doyle P.L.S. or R.C.E. No. P.L.S. 4694



COUNTY SURVEYOR'S STATEMENT

This Corner Record was received MARCH 4, 2013

and examined and filed APRIL 17th 2013

Signed Richard G. Simonitch P.L.S. or R.C.E. No. 7821

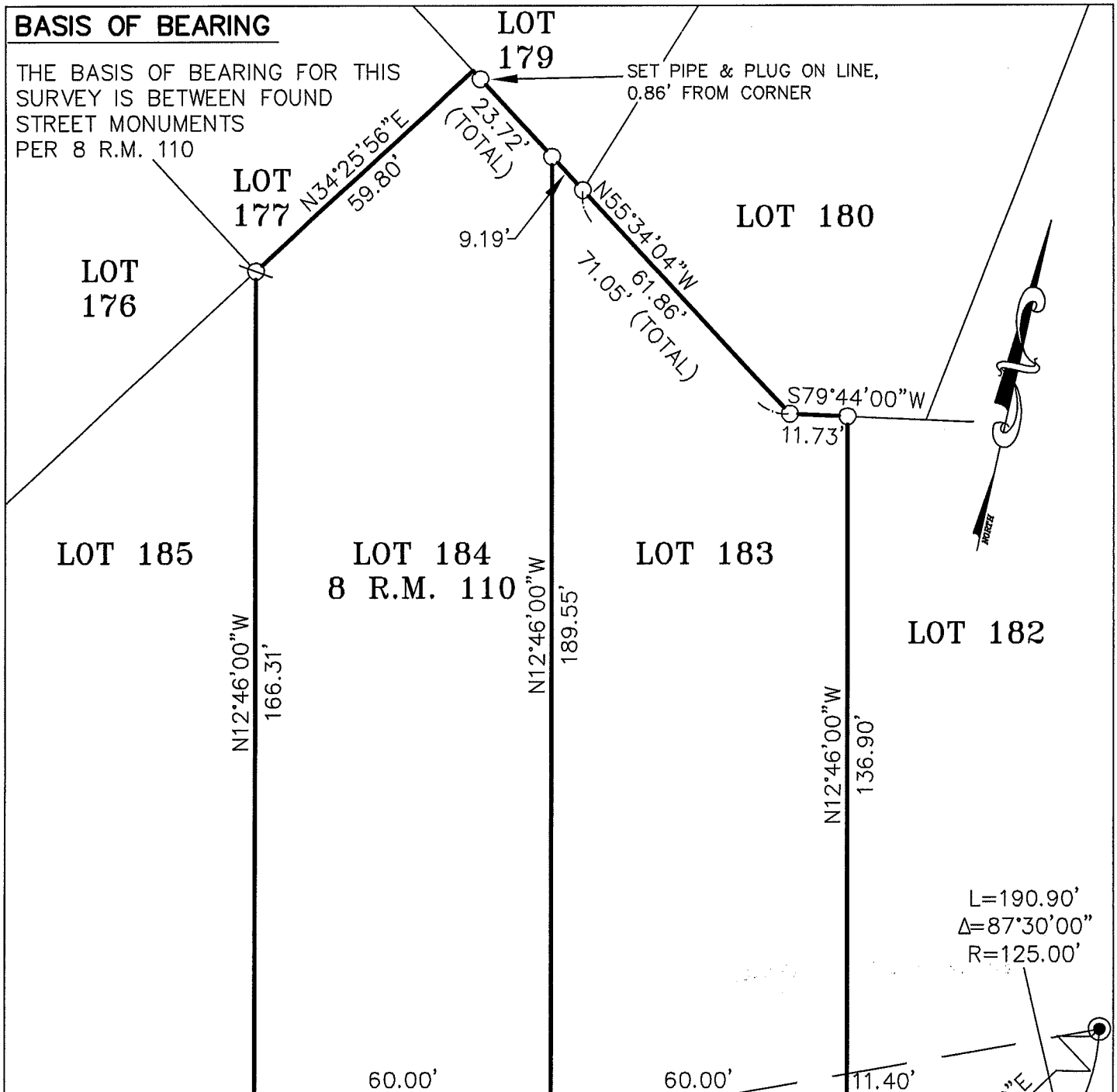
Title DEPUTY COUNTY SURVEYOR

County Surveyor's Comment _____



BASIS OF BEARING

THE BASIS OF BEARING FOR THIS SURVEY IS BETWEEN FOUND STREET MONUMENTS PER 8 R.M. 110



SET PIPE & PLUG ON LINE, 0.86' FROM CORNER

L=190.90'
 Δ=87°30'00"
 R=125.00'

BASIS OF BEARING

S60°36'06"W
 417.68' (CALC.)

LEGEND

- FOUND STREET MONUMENT
- ⊗ SET NAIL & TAG, L.S. 4694
- SET 3/4" PIPE & PLUG, L.S. 4694



CORNER RECORD		
LOTS 183 AND 184 PER 8 R.M. 110		
CORTE MADERA MARIN COUNTY CALIFORNIA		
SCALE: 1" = 30'	LAWRENCE P. DOYLE	DRAWN BY:
DATE: 1/23/13		SHEET 2 OF 2
LAND SURVEYOR/CIVIL ENGINEER		
100 HELENS LANE MILL VALLEY CA 94941 (415-388-9585)		
		DRAWING NO. 2325