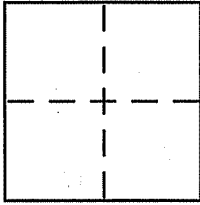


CORNER RECORD

Document Number 026 -132 -13
County of Marin, California

City of Corte Madera
Brief Legal Description Lot 149, 8 Rm 110



CORNER TYPE

Government Corner Control
Meander Property
Rancho Other
Date of Survey _____

COORDINATES (Optional)

N. _____
E. _____
Zone _____ NAD27 NAD83
NAD83 Epoch _____
Elev. _____
Vert. Datum: NGVD29 NAVD88
Meas. Units: Metric Imperial

Corner - Left as found Found and tagged Established Reestablished Rebuilt

Identification and type of corner found: Evidence used to identify or procedure used to establish or reestablish the corner:

See page 2 of 2

A description of the physical condition of the monument as found and as set or reset:

See page 2 of 2

SURVEYOR'S STATEMENT

This Corner Record was prepared by me or under my direction in conformance with the Land Surveyor's Act on 6/15/08

Signed [Signature] P.L.S. or R.G.E. No. 6784



COUNTY SURVEYOR'S STATEMENT

This Corner Record was received JULY 15, 2008

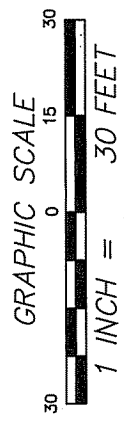
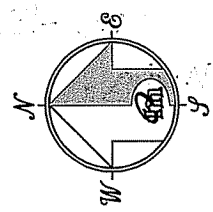
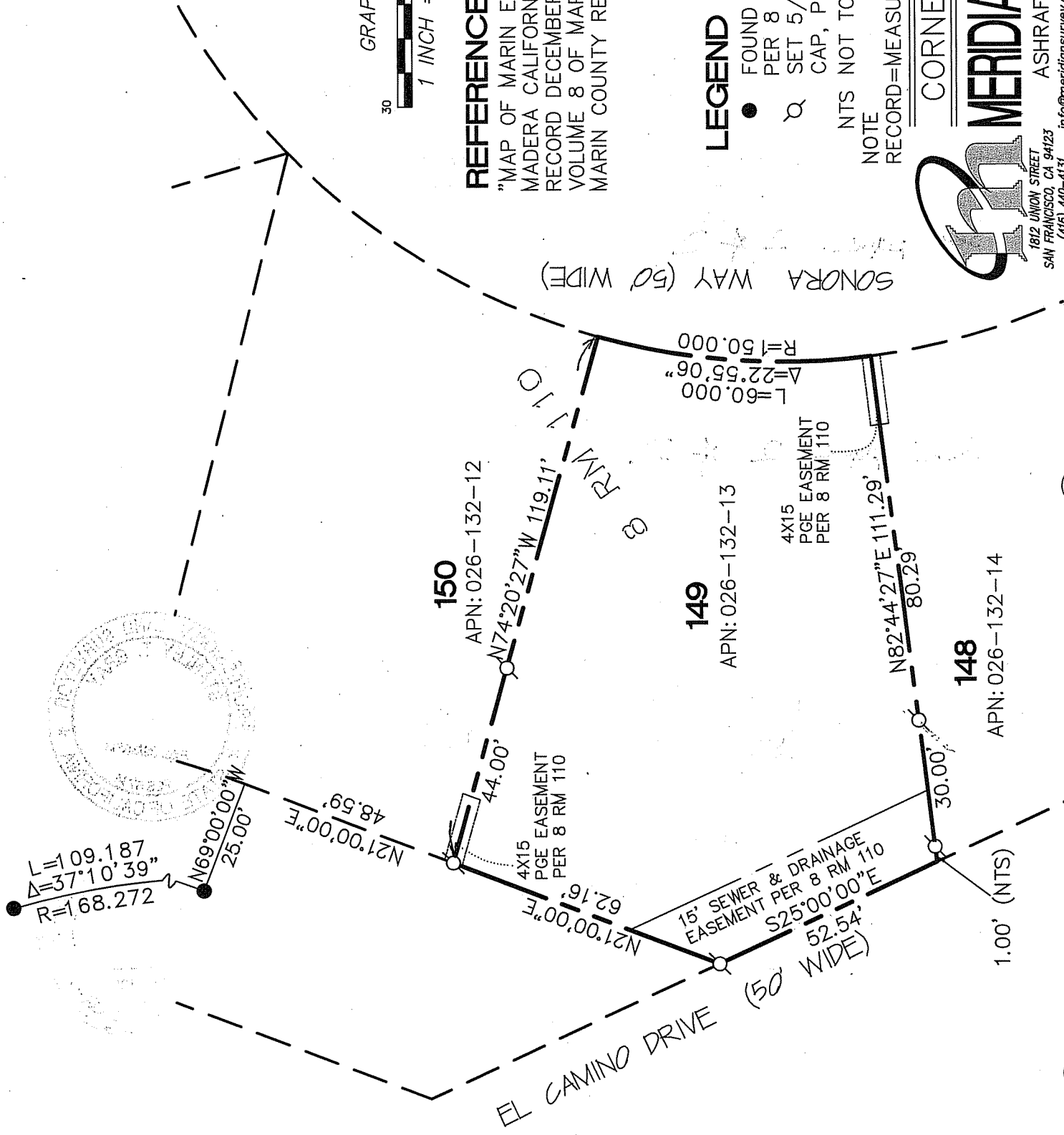
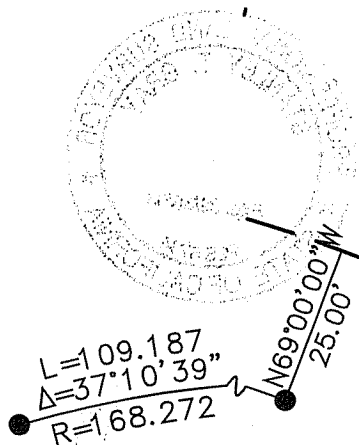
and examined and filed AUGUST 26, 2008

Signed [Signature] P.L.S. or R.G.E. No. 7128

Title COUNTY SURVEYOR



County Surveyor's Comment _____



REFERENCE

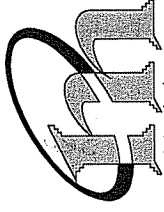
"MAP OF MARIN ESTATES" CORTE MADERA CALIFORNIA FILED FOR RECORD DECEMBER 15 1955 IN PM VOLUME 8 OF MAPS, AT PAGE 110, MARIN COUNTY RECORDS.

LEGEND

- FOUND CITY MONUMENT PER 8 RM 110
- SET 5/8" REBAR WITH CAP, PLS 6784

NTS NOT TO SCALE
NOTE
RECORD=MEASURED

CORNER RECORD



MERIDIAN SURVEYING ENGINEERING, INC.

1812 UNION STREET
SAN FRANCISCO, CA 94123
ASHRAF 777 GRAND AVENUE, SUITE 202
SAN RAFAEL, CA 94901
(415) 440-4131 info@meridiansurvey.com (415) 440-8450